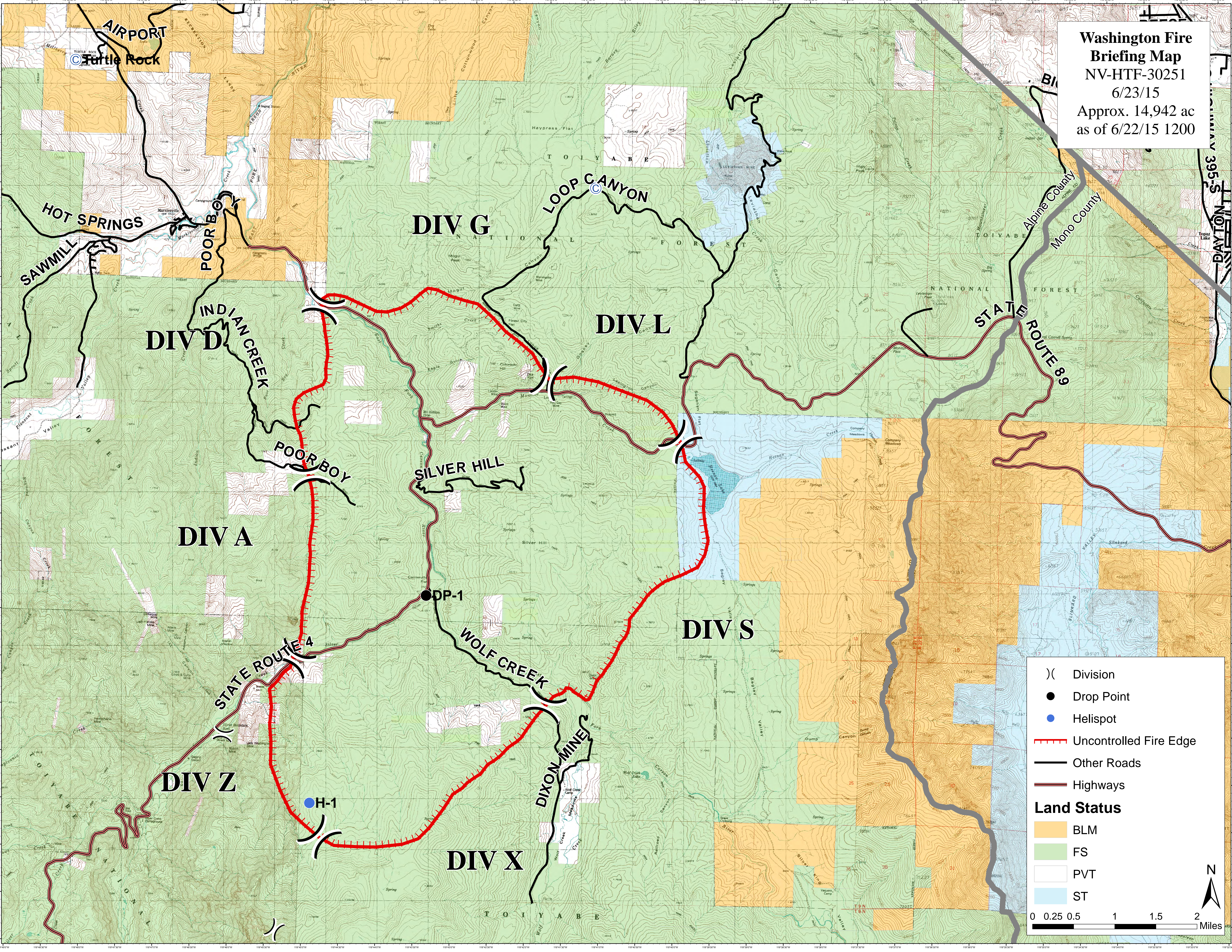


**Washington Fire**  
**Briefing Map**  
 NV-HTF-30251  
 6/23/15  
 Approx. 14,942 ac  
 as of 6/22/15 1200



	Division
	Drop Point
	Helispot
	Uncontrolled Fire Edge
	Other Roads
	Highways
<b>Land Status</b>	
	BLM
	FS
	PVT
	ST
0 0.25 0.5 1 1.5 2 Miles	
N 	