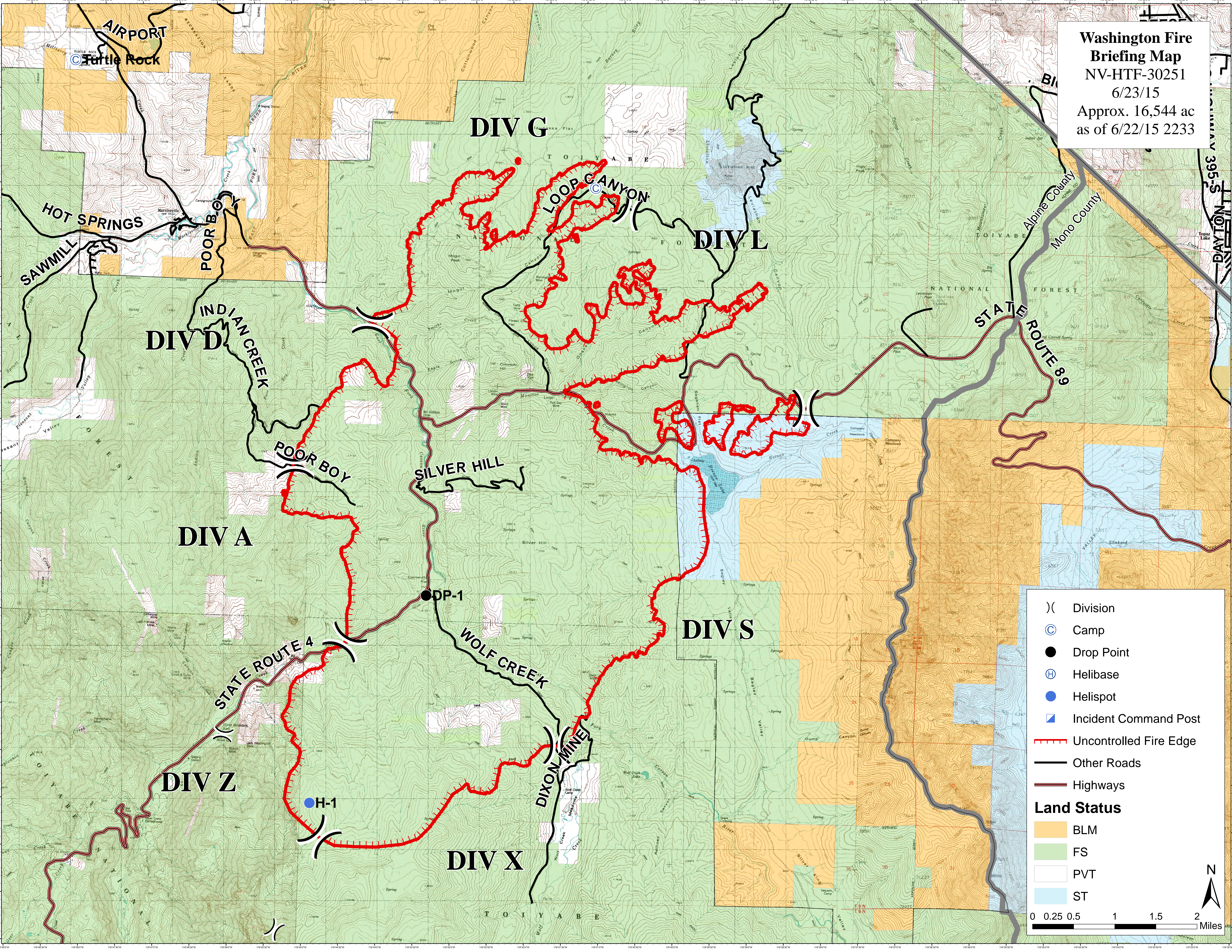


**Washington Fire**  
**Briefing Map**  
 NV-HTF-30251  
 6/23/15  
 Approx. 16,544 ac  
 as of 6/22/15 2233



- ( ) Division
- Ⓢ Camp
- Drop Point
- Ⓜ Helibase
- Helispot
- ▣ Incident Command Post
- - - Uncontrolled Fire Edge
- Other Roads
- Highways

**Land Status**

- BLM
- FS
- PVT
- ST

0 0.25 0.5 1 1.5 2 Miles