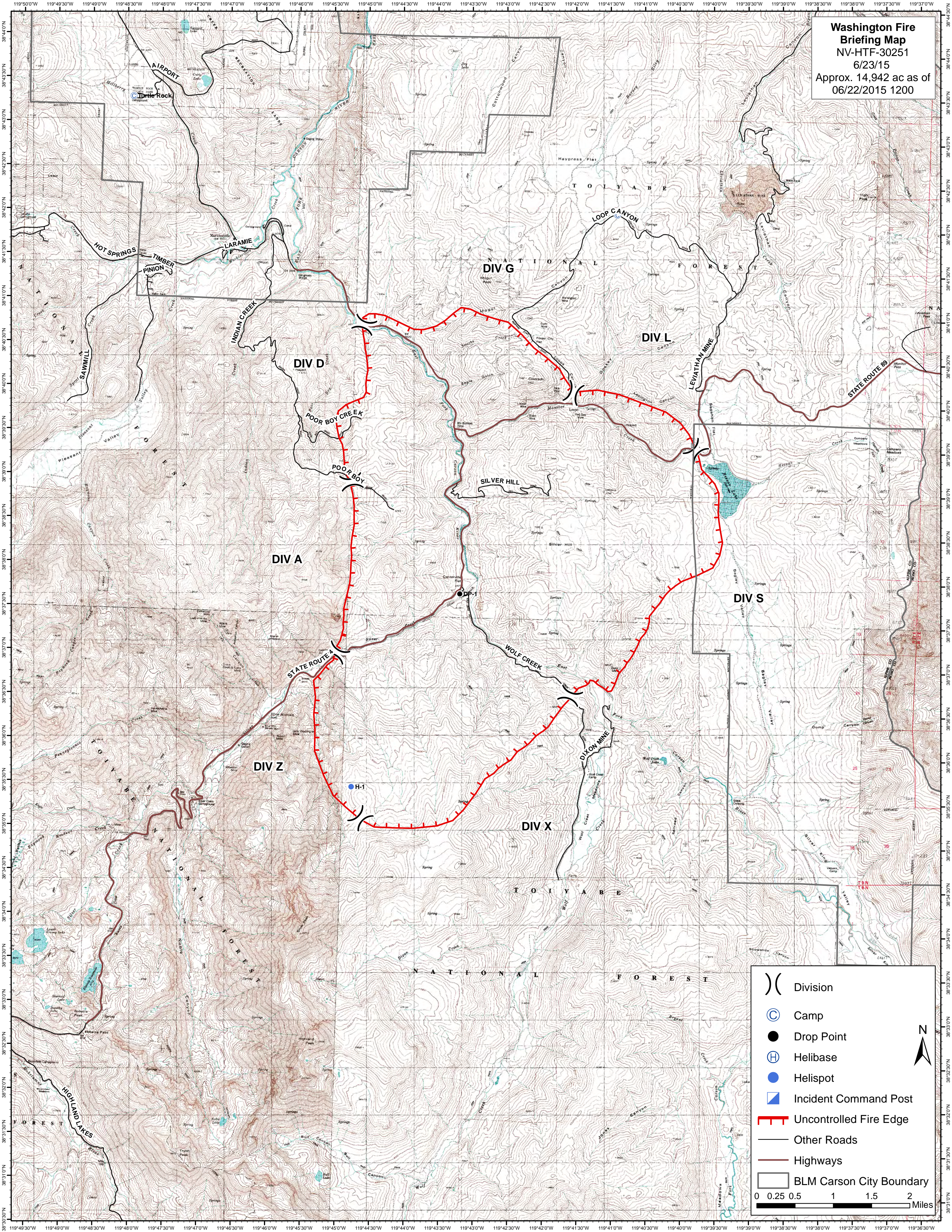


Washington Fire Briefing Map
 NV-HTF-30251
 6/23/15
 Approx. 14,942 ac as of
 06/22/2015 1200



)) Division
 © Camp
 ● Drop Point
 Ⓜ Helibase
 ● Helispot
 ▣ Incident Command Post
 [Red dashed line] Uncontrolled Fire Edge
 — Other Roads
 [Thick red line] Highways
 [Grey box] BLM Carson City Boundary

0 0.25 0.5 1 1.5 2 Miles

N