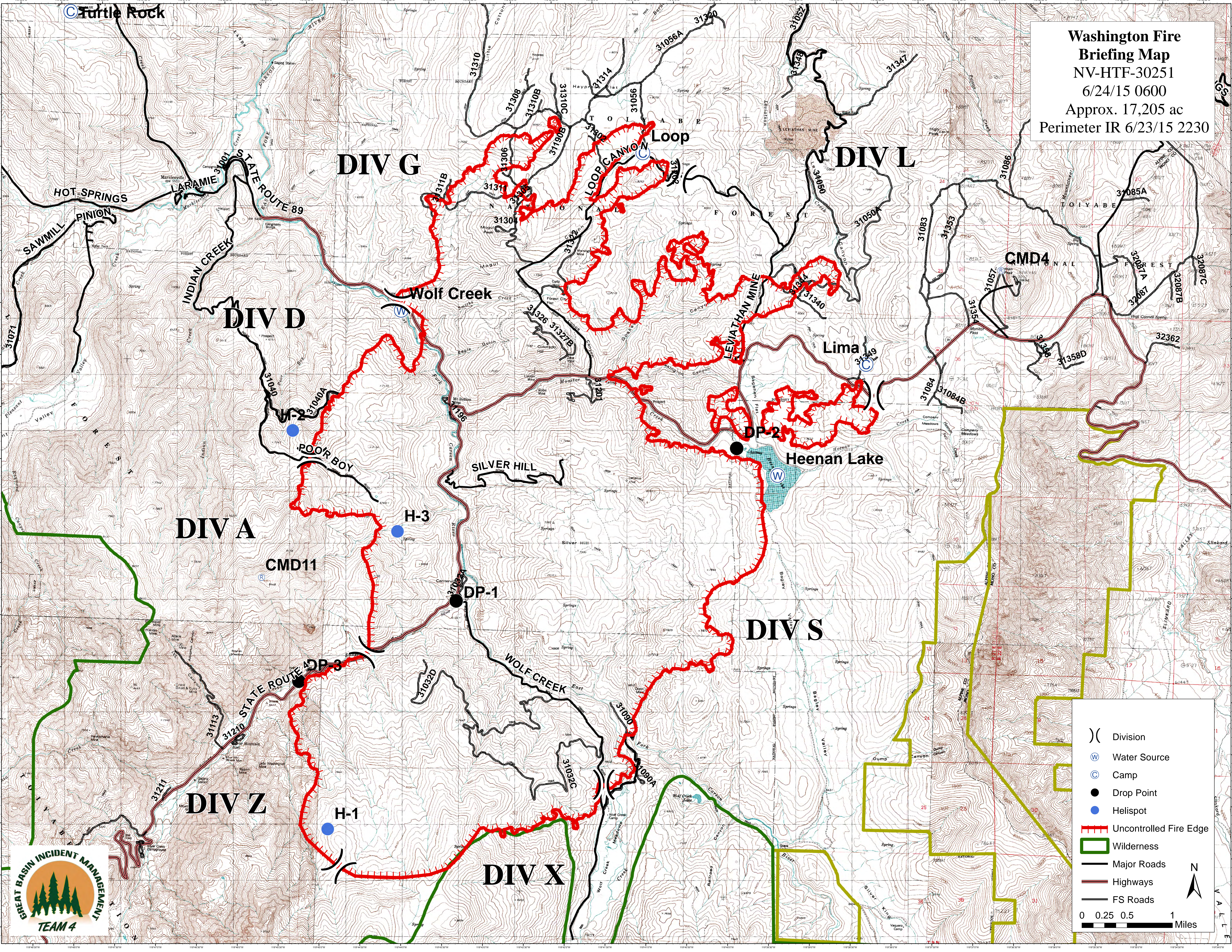


**Washington Fire**  
**Briefing Map**  
 NV-HTF-30251  
 6/24/15 0600  
 Approx. 17,205 ac  
 Perimeter IR 6/23/15 2230



- ( ) Division
  - (W) Water Source
  - (C) Camp
  - (●) Drop Point
  - (●) Helispot
  - (---) Uncontrolled Fire Edge
  - (---) Wilderness
  - (---) Major Roads
  - (---) Highways
  - (---) FS Roads
- 0 0.25 0.5 1 Miles

