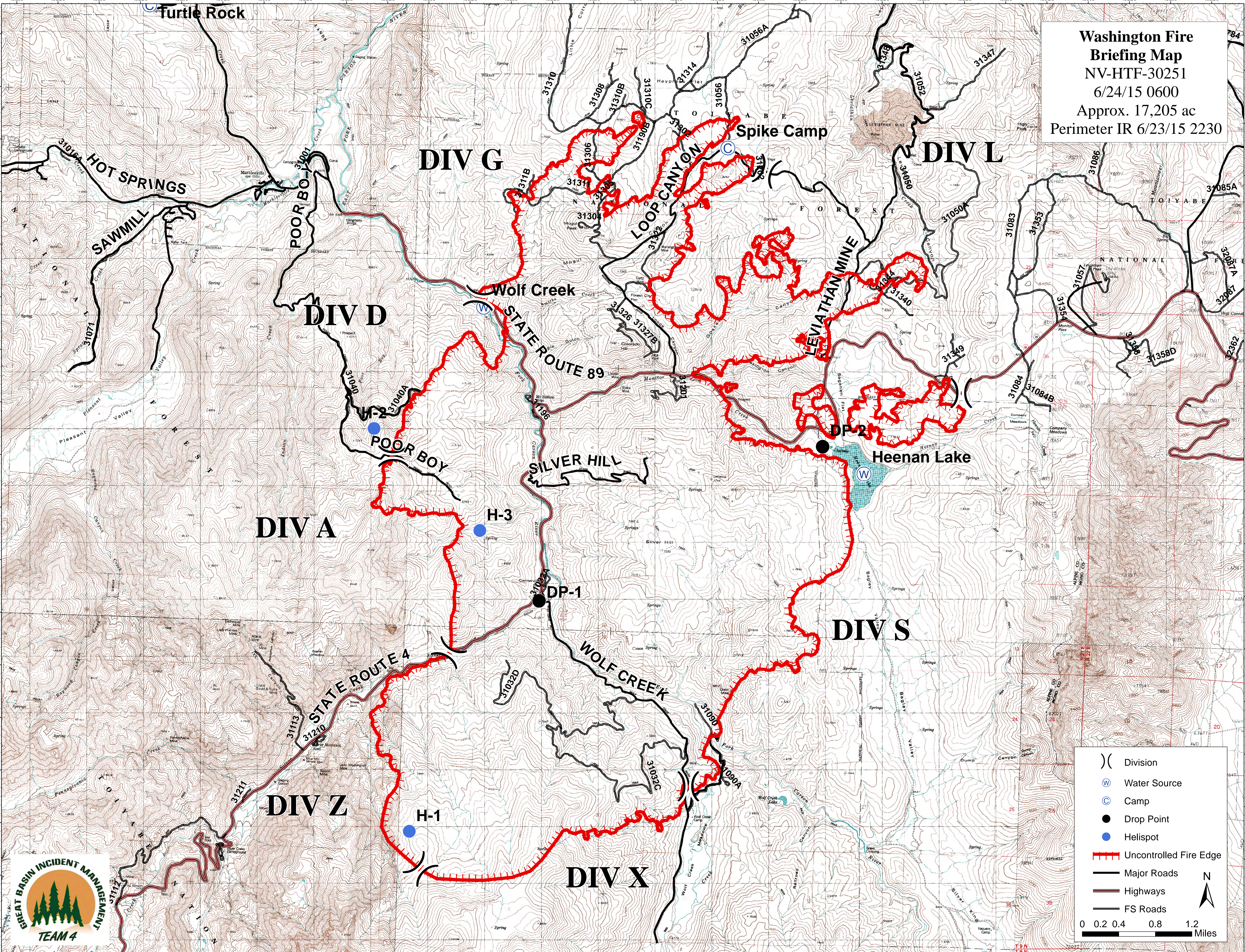


Washington Fire
Briefing Map
 NV-HTF-30251
 6/24/15 0600
 Approx. 17,205 ac
 Perimeter IR 6/23/15 2230



	Division
	Water Source
	Camp
	Drop Point
	Helispot
	Uncontrolled Fire Edge
	Major Roads
	Highways
	FS Roads

0 0.2 0.4 0.8 1.2 Miles

N

