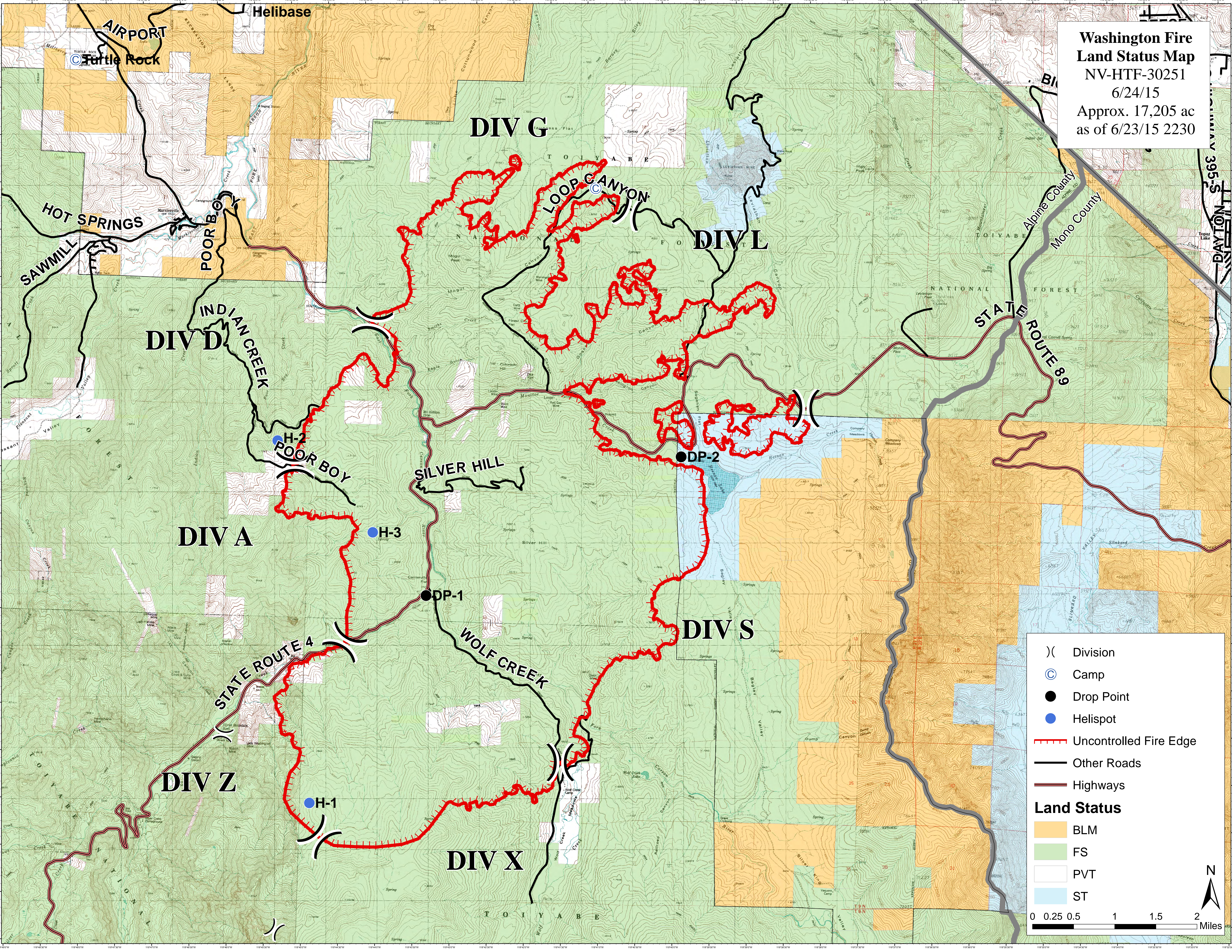


**Washington Fire**  
**Land Status Map**  
 NV-HTF-30251  
 6/24/15  
 Approx. 17,205 ac  
 as of 6/23/15 2230



)( Division  
 © Camp  
 ● Drop Point  
 ● Helispot  
 - - - Uncontrolled Fire Edge  
 — Other Roads  
 — Highways  
**Land Status**  
 ■ BLM  
 ■ FS  
 ■ PVT  
 ■ ST

0 0.25 0.5 1 1.5 2 Miles