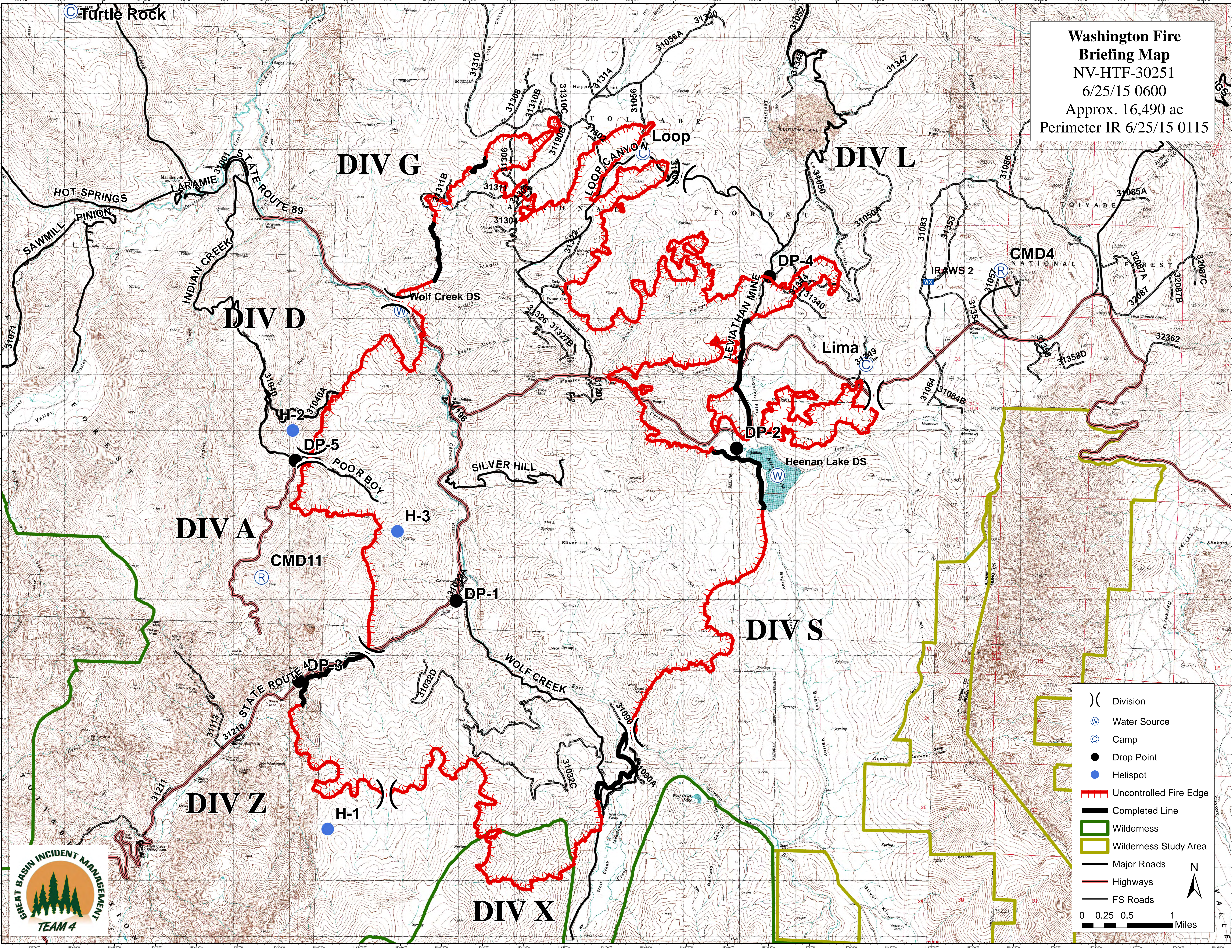


**Washington Fire**  
**Briefing Map**  
 NV-HTF-30251  
 6/25/15 0600  
 Approx. 16,490 ac  
 Perimeter IR 6/25/15 0115



- Division
  - Water Source
  - Camp
  - Drop Point
  - Helispot
  - Uncontrolled Fire Edge
  - Completed Line
  - Wilderness
  - Wilderness Study Area
  - Major Roads
  - Highways
  - FS Roads
- 0 0.25 0.5 1 Miles

