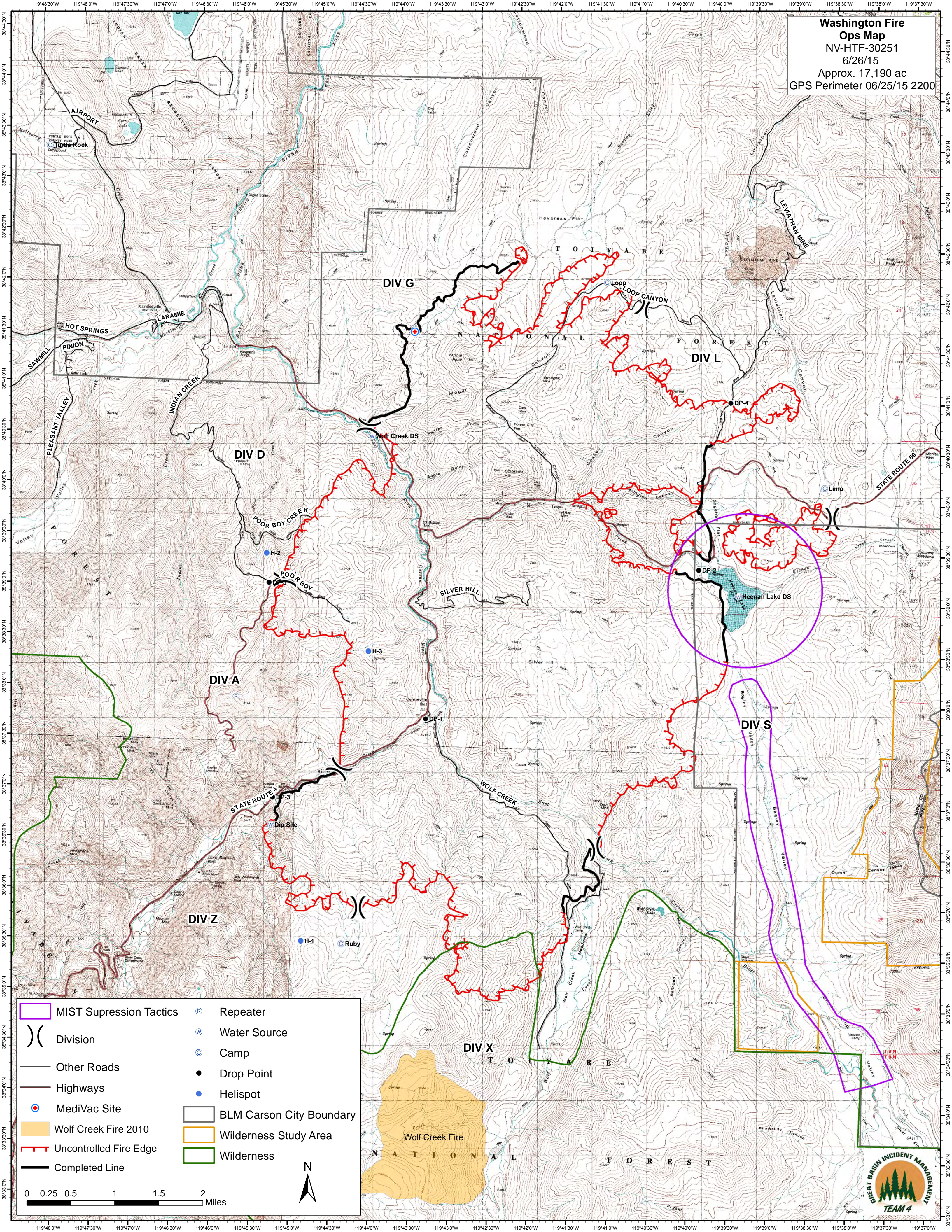


**Washington Fire  
Ops Map**  
 NV-HTF-30251  
 6/26/15  
 Approx. 17,190 ac  
 GPS Perimeter 06/25/15 2200



MIST Supression Tactics	Repeater
Division	Water Source
Other Roads	Camp
Highways	Drop Point
MediVac Site	Helispot
Wolf Creek Fire 2010	BLM Carson City Boundary
Uncontrolled Fire Edge	Wilderness Study Area
Completed Line	Wilderness

0 0.25 0.5 1 1.5 2 Miles

N

