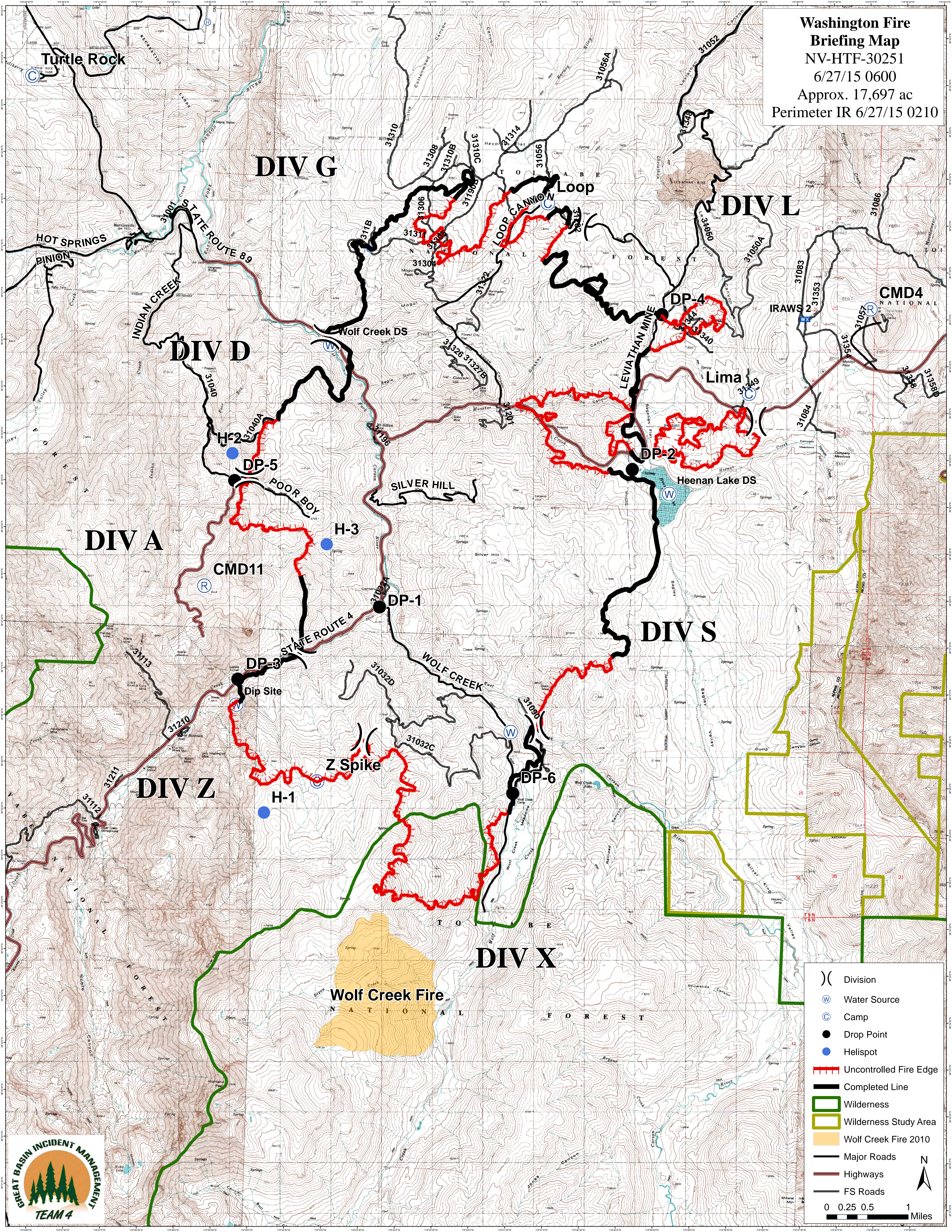


Washington Fire
Briefing Map
 NV-HTF-30251
 6/27/15 0600
 Approx. 17,697 ac
 Perimeter IR 6/27/15 0210



- () Division
- W Water Source
- C Camp
- Drop Point
- Helispot
- ▬▬▬ Uncontrolled Fire Edge
- ▬▬▬ Completed Line
- ▭ Wilderness
- ▭ Wilderness Study Area
- ▭ Wolf Creek Fire 2010
- ▬ Major Roads
- ▬ Highways
- ▬ FS Roads
- 0 0.25 0.5 1 Miles

