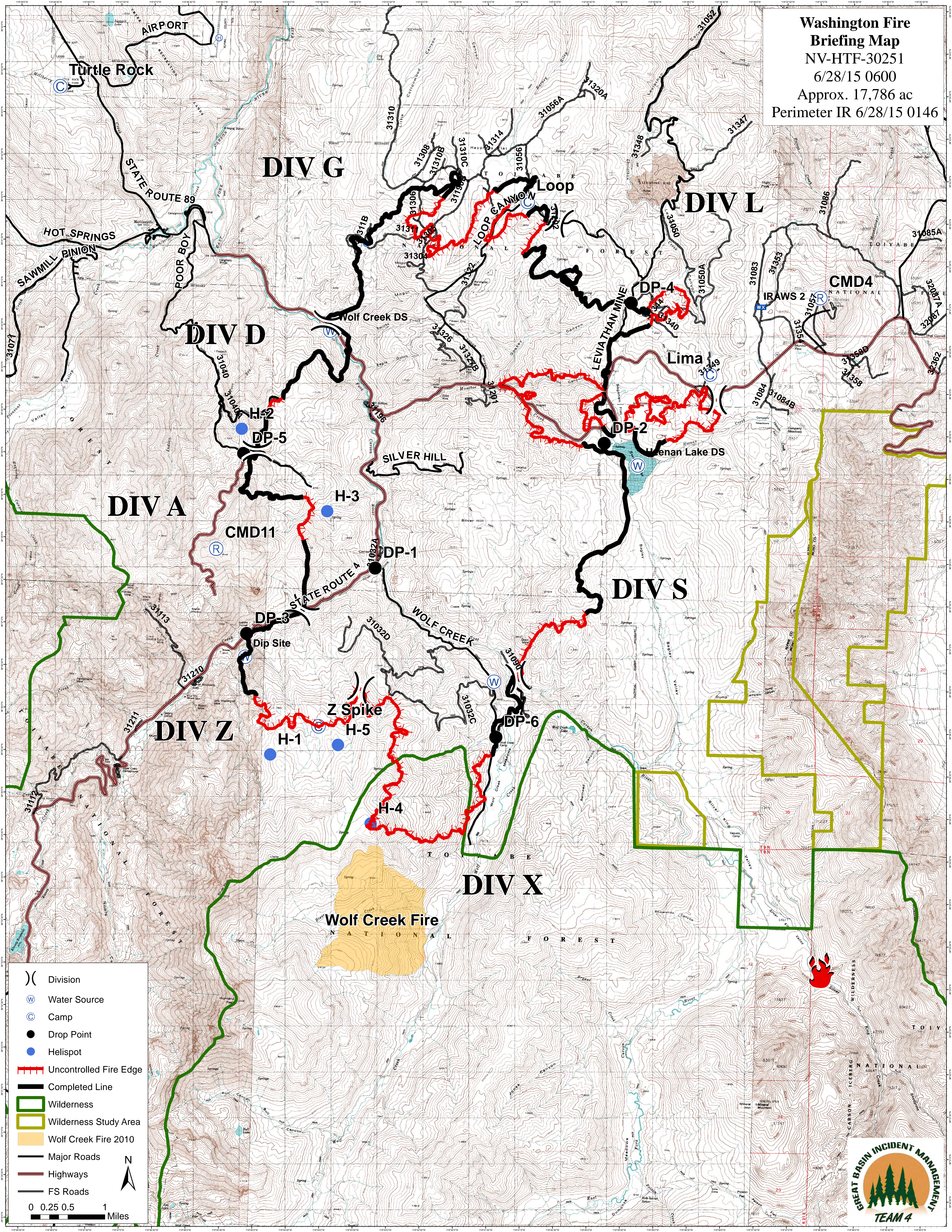


**Washington Fire
Briefing Map**
 NV-HTF-30251
 6/28/15 0600
 Approx. 17,786 ac
 Perimeter IR 6/28/15 0146



- Division
 - Water Source
 - Camp
 - Drop Point
 - Helispot
 - Uncontrolled Fire Edge
 - Completed Line
 - Wilderness
 - Wilderness Study Area
 - Wolf Creek Fire 2010
 - Major Roads
 - Highways
 - FS Roads
- 0 0.25 0.5 1 Miles

