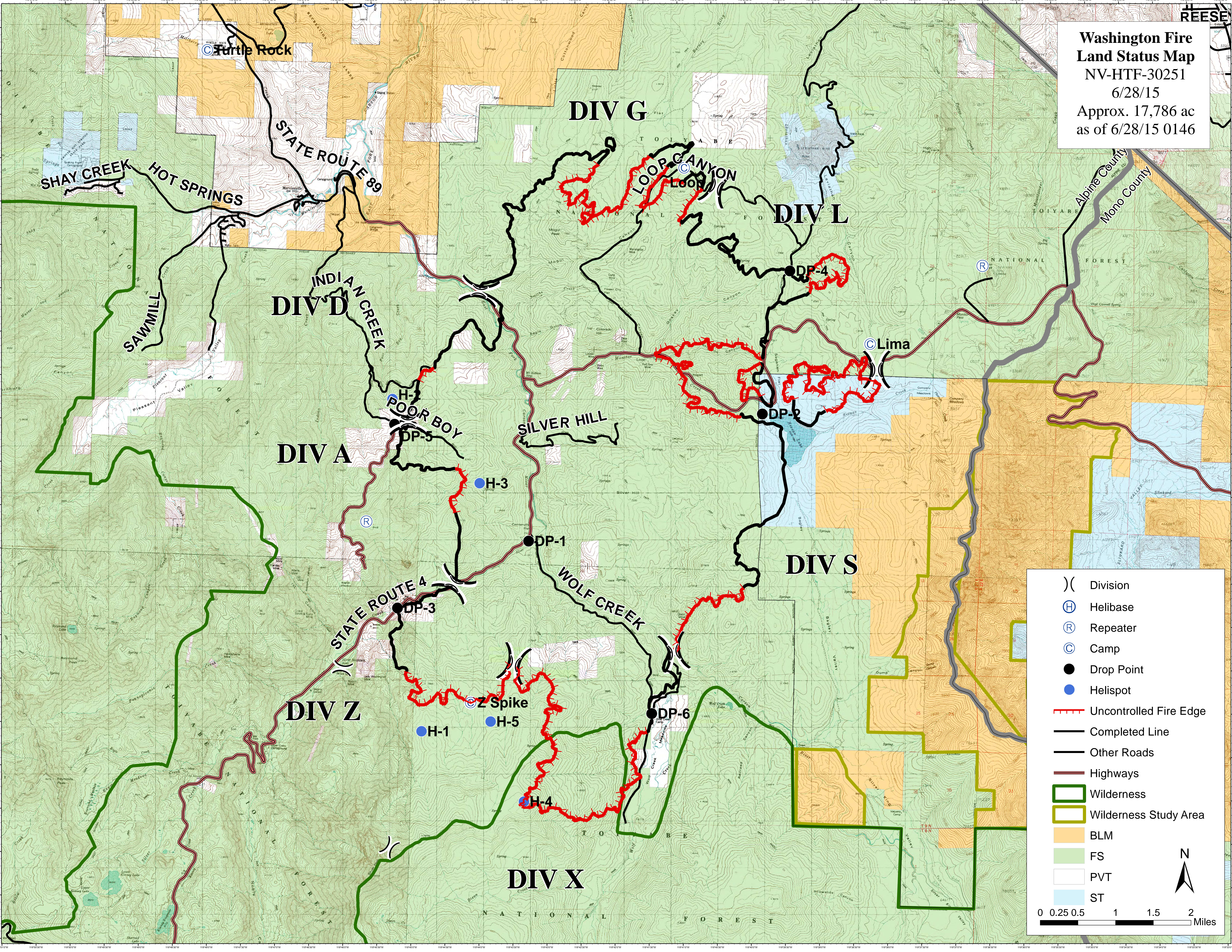


**Washington Fire  
Land Status Map**  
 NV-HTF-30251  
 6/28/15  
 Approx. 17,786 ac  
 as of 6/28/15 0146



	Division
	Helibase
	Repeater
	Camp
	Drop Point
	Helispot
	Uncontrolled Fire Edge
	Completed Line
	Other Roads
	Highways
	Wilderness
	Wilderness Study Area
	BLM
	FS
	PVT
	ST

0 0.25 0.5 1 1.5 2 Miles

N