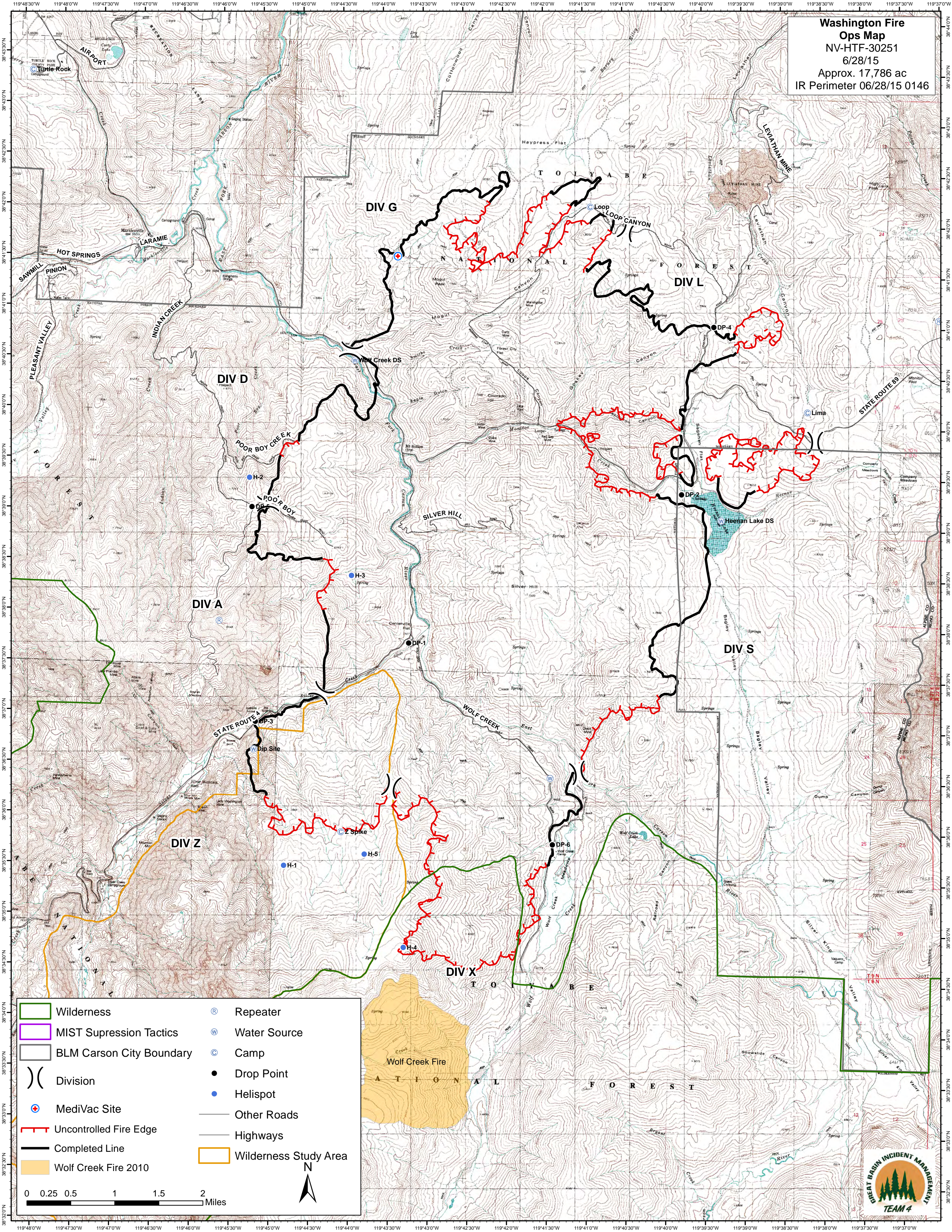


**Washington Fire
Ops Map**
 NV-HTF-30251
 6/28/15
 Approx. 17,786 ac
 IR Perimeter 06/28/15 0146



	Wilderness		Repeater
	MIST Suppression Tactics		Water Source
	BLM Carson City Boundary		Camp
	Division		Drop Point
	Uncontrolled Fire Edge		Helispot
	Completed Line		Other Roads
	Wolf Creek Fire 2010		Wilderness Study Area

0 0.25 0.5 1 1.5 2 Miles

N

