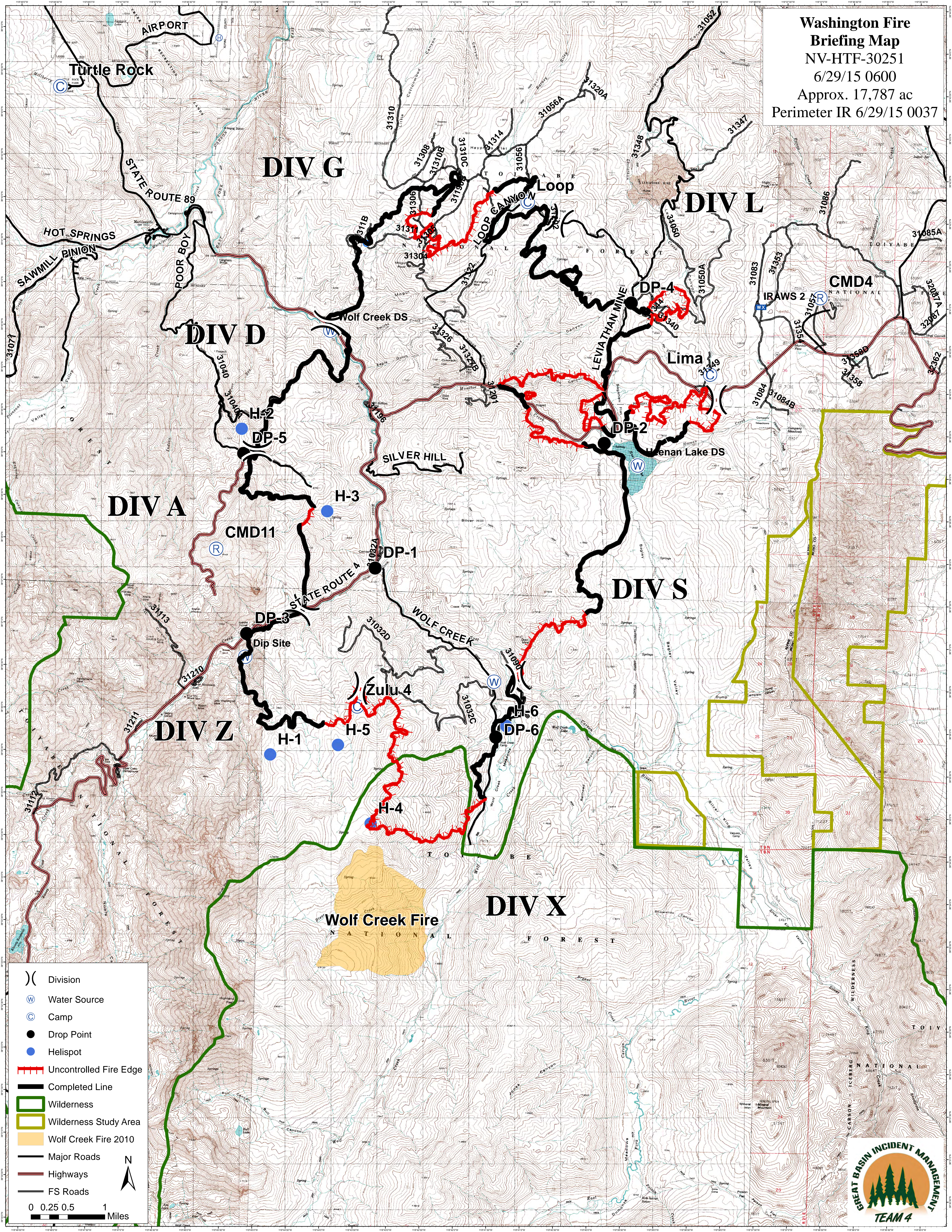


**Washington Fire  
Briefing Map**  
 NV-HTF-30251  
 6/29/15 0600  
 Approx. 17,787 ac  
 Perimeter IR 6/29/15 0037



- ( ) Division
- (W) Water Source
- (C) Camp
- Drop Point
- Helispot
- Uncontrolled Fire Edge
- Completed Line
- ▭ Wilderness
- ▭ Wilderness Study Area
- ▭ Wolf Creek Fire 2010
- Major Roads
- Highways
- FS Roads

0 0.25 0.5 1 Miles

