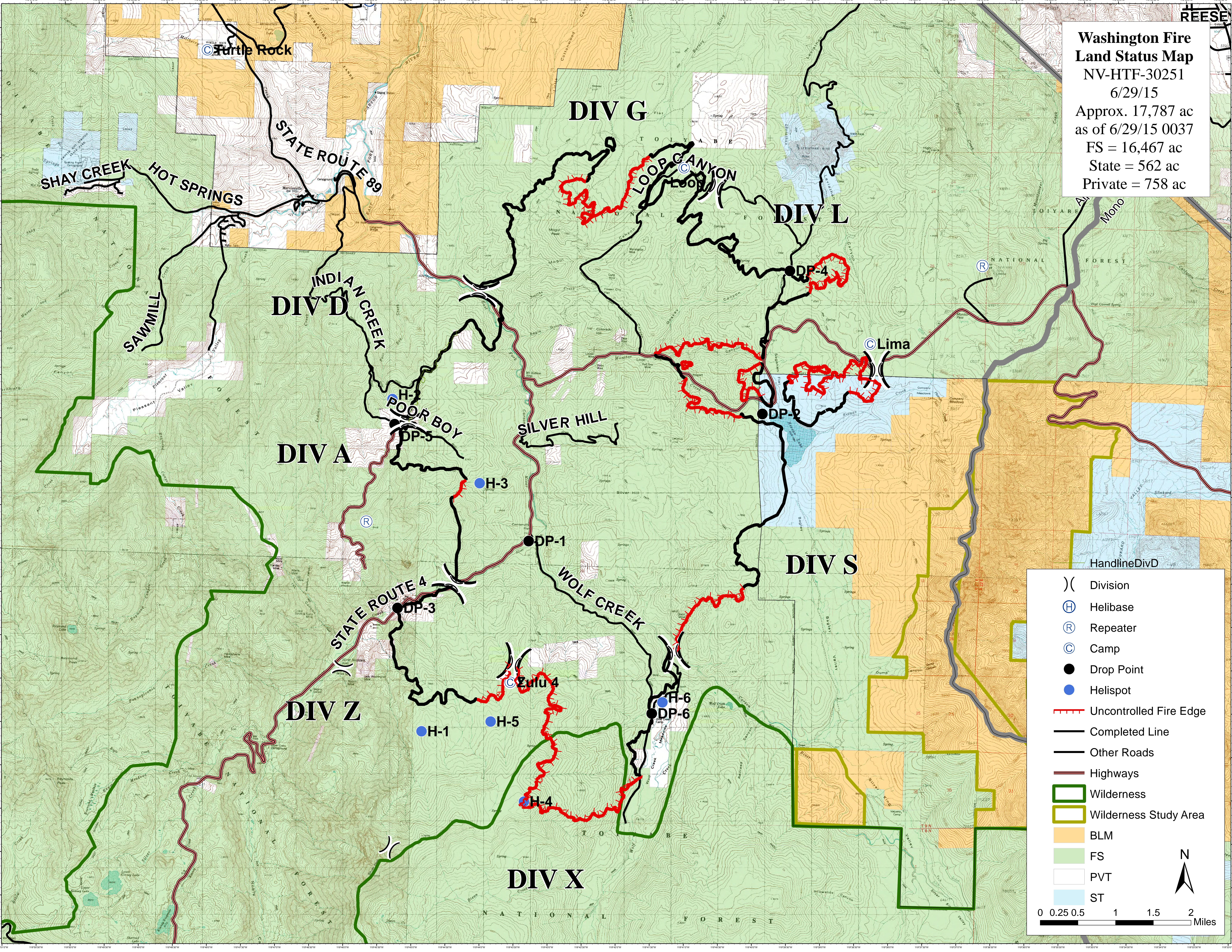


**Washington Fire
Land Status Map**
 NV-HTF-30251
 6/29/15
 Approx. 17,787 ac
 as of 6/29/15 0037
 FS = 16,467 ac
 State = 562 ac
 Private = 758 ac



HandlineDivD

- () Division
- (H) Helibase
- (R) Repeater
- (C) Camp
- Drop Point
- Helispot
- Uncontrolled Fire Edge
- Completed Line
- Other Roads
- Highways
- Wilderness
- Wilderness Study Area
- BLM
- FS
- PVT
- ST

0 0.25 0.5 1 1.5 2 Miles

N