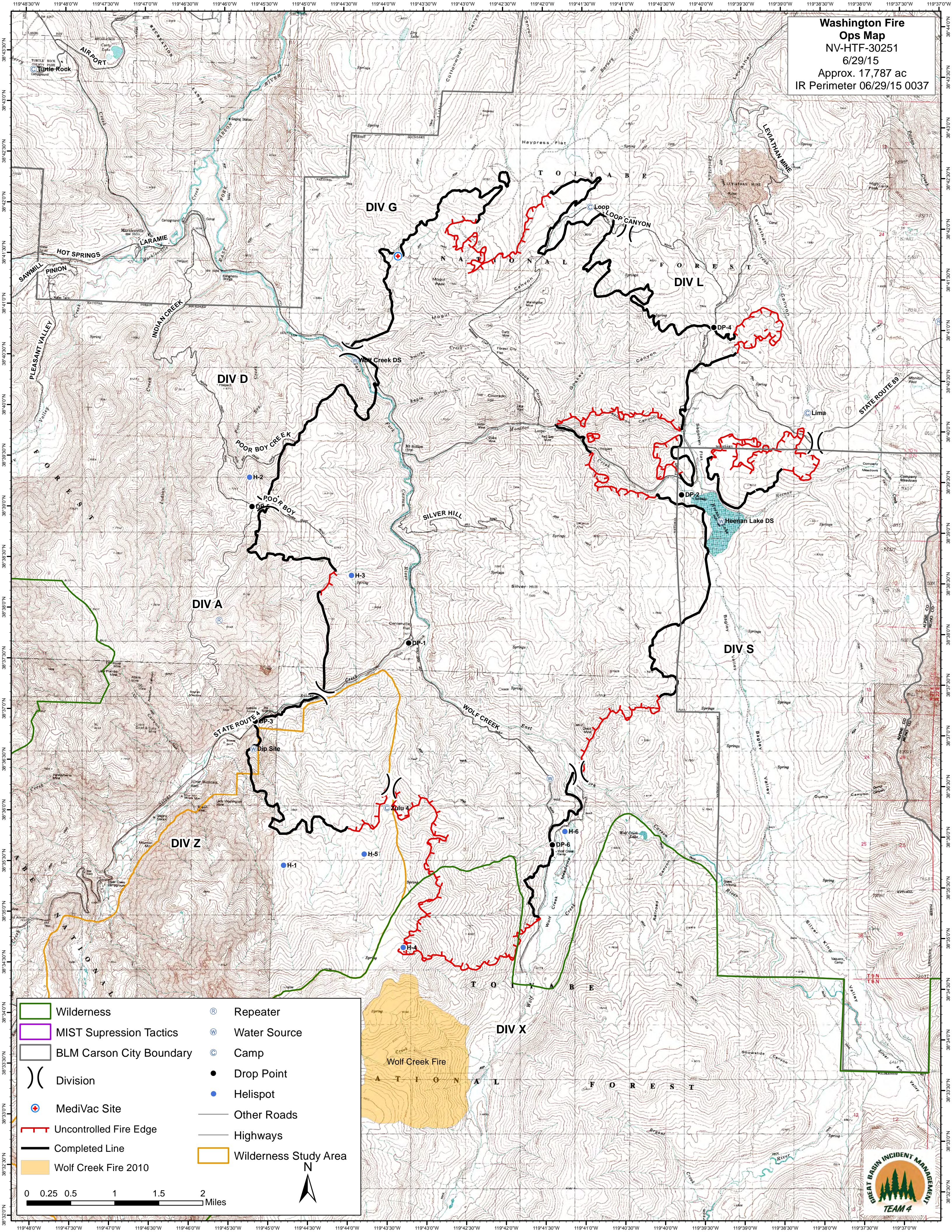


**Washington Fire  
Ops Map**  
 NV-HTF-30251  
 6/29/15  
 Approx. 17,787 ac  
 IR Perimeter 06/29/15 0037



	Wilderness		Repeater
	MIST Suppression Tactics		Water Source
	BLM Carson City Boundary		Camp
	Division		Drop Point
	MediVac Site		Helispot
	Uncontrolled Fire Edge		Other Roads
	Completed Line		Highways
	Wolf Creek Fire 2010		Wilderness Study Area

0 0.25 0.5 1 1.5 2 Miles

N

