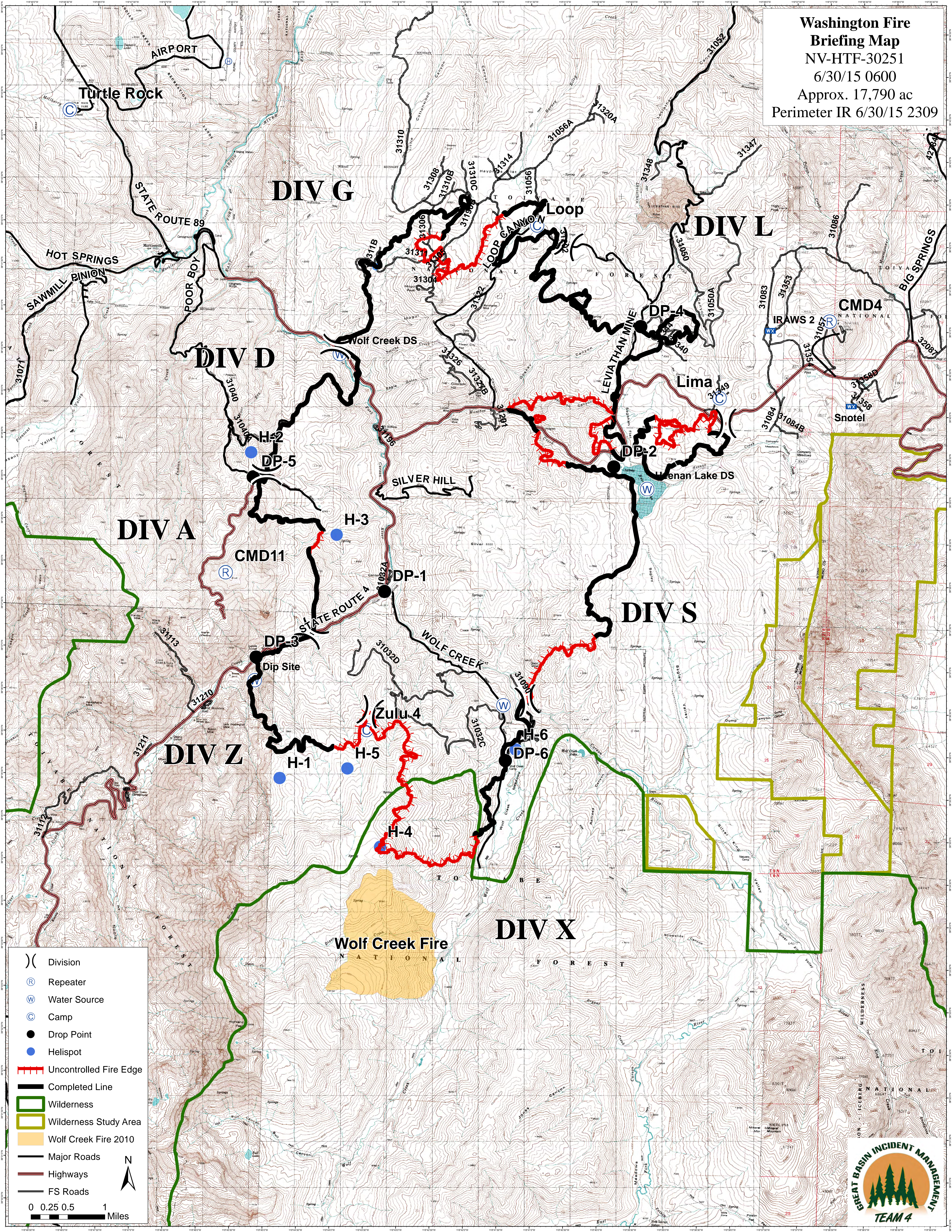


Washington Fire
Briefing Map
 NV-HTF-30251
 6/30/15 0600
 Approx. 17,790 ac
 Perimeter IR 6/30/15 2309



)(Division
 Ⓡ Repeater
 Ⓜ Water Source
 Ⓒ Camp
 ● Drop Point
 ● Helispot
 - - - Uncontrolled Fire Edge
 — Completed Line
 — Wilderness
 — Wilderness Study Area
 — Wolf Creek Fire 2010
 — Major Roads
 — Highways
 — FS Roads

0 0.25 0.5 1 Miles
 N
 North Arrow

