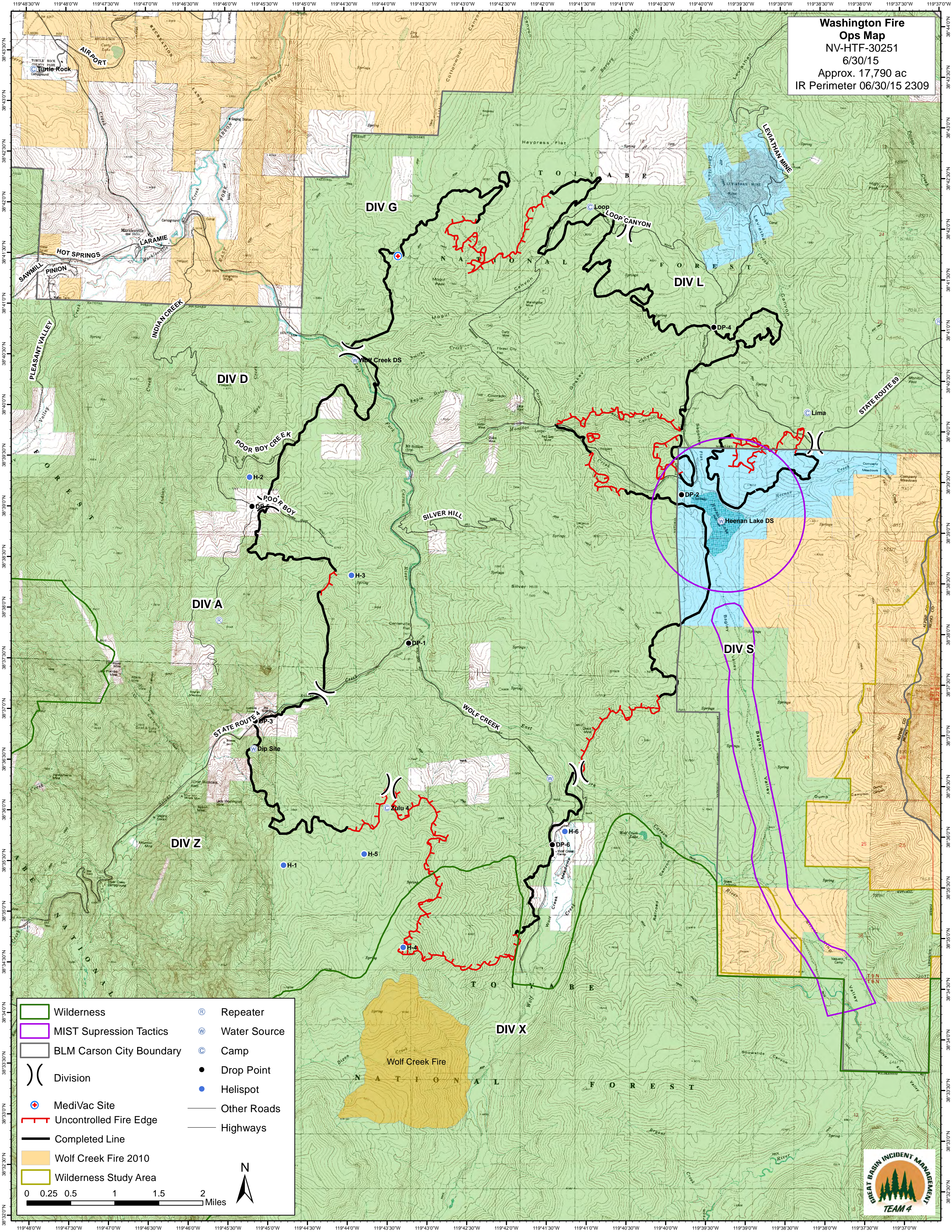


**Washington Fire
Ops Map**
 NV-HTF-30251
 6/30/15
 Approx. 17,790 ac
 IR Perimeter 06/30/15 2309



Wilderness	Repeater
MIST Suppression Tactics	Water Source
BLM Carson City Boundary	Camp
Division	Drop Point
MediVac Site	Helispot
Uncontrolled Fire Edge	Other Roads
Completed Line	Highways
Wolf Creek Fire 2010	
Wilderness Study Area	

0 0.25 0.5 1 1.5 2 Miles

N

