

119°45'0"W

119°42'30"W

119°40'0"W

38°42'30"N

38°42'30"N

38°40'0"N

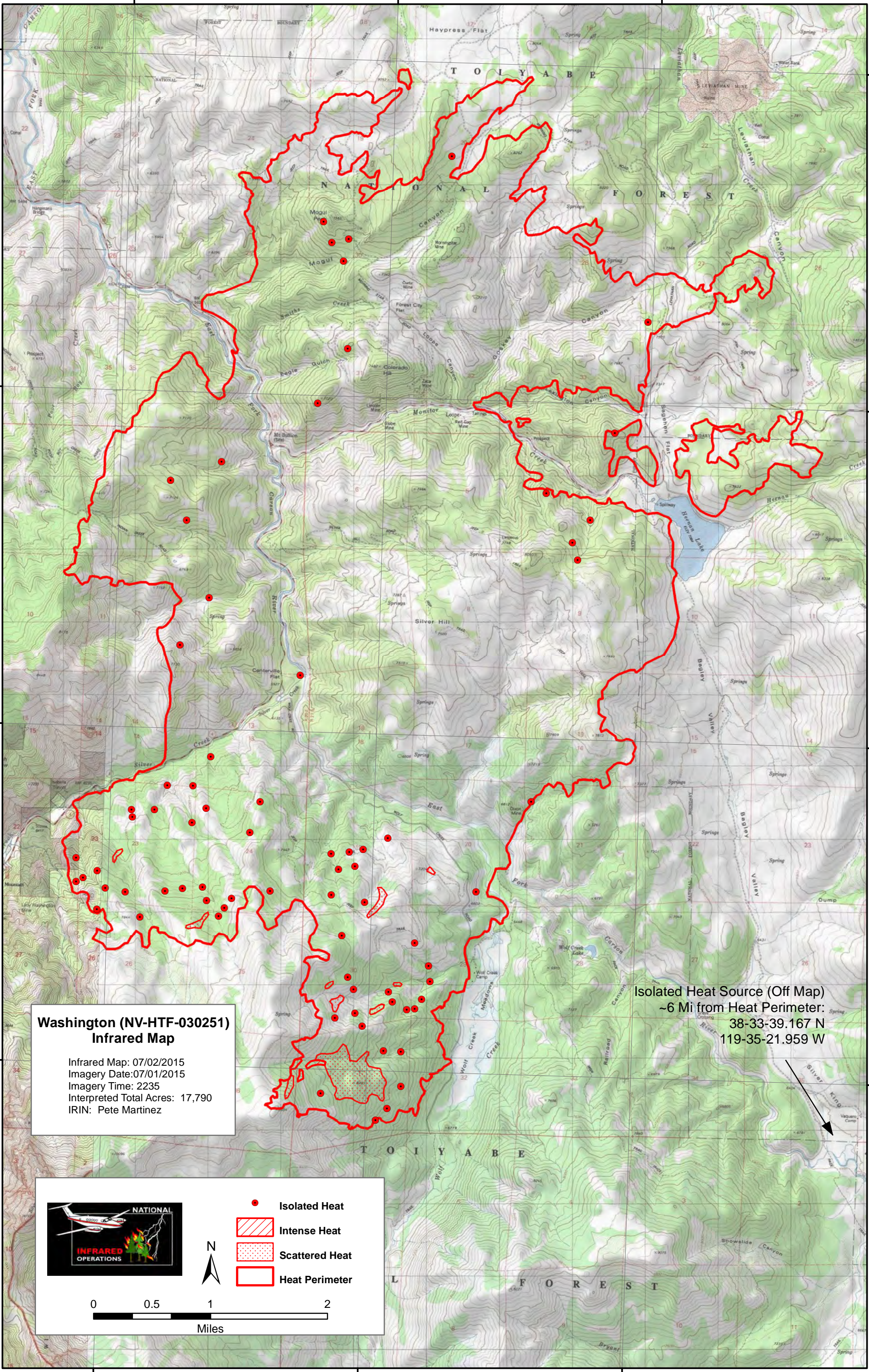
38°40'0"N

38°37'30"N

38°37'30"N

38°35'0"N

38°35'0"N




**Washington (NV-HTF-030251)
Infrared Map**


Infrared Map: 07/02/2015
 Imagery Date: 07/01/2015
 Imagery Time: 2235
 Interpreted Total Acres: 17,790
 IRIN: Pete Martinez

Isolated Heat Source (Off Map)
 ~6 Mi from Heat Perimeter:
 38-33-39.167 N
 119-35-21.959 W

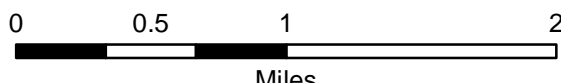




- Isolated Heat
- Intense Heat
- Scattered Heat
- Heat Perimeter



N



0 0.5 1 2
Miles

119°45'0"W

119°42'30"W

119°40'0"W