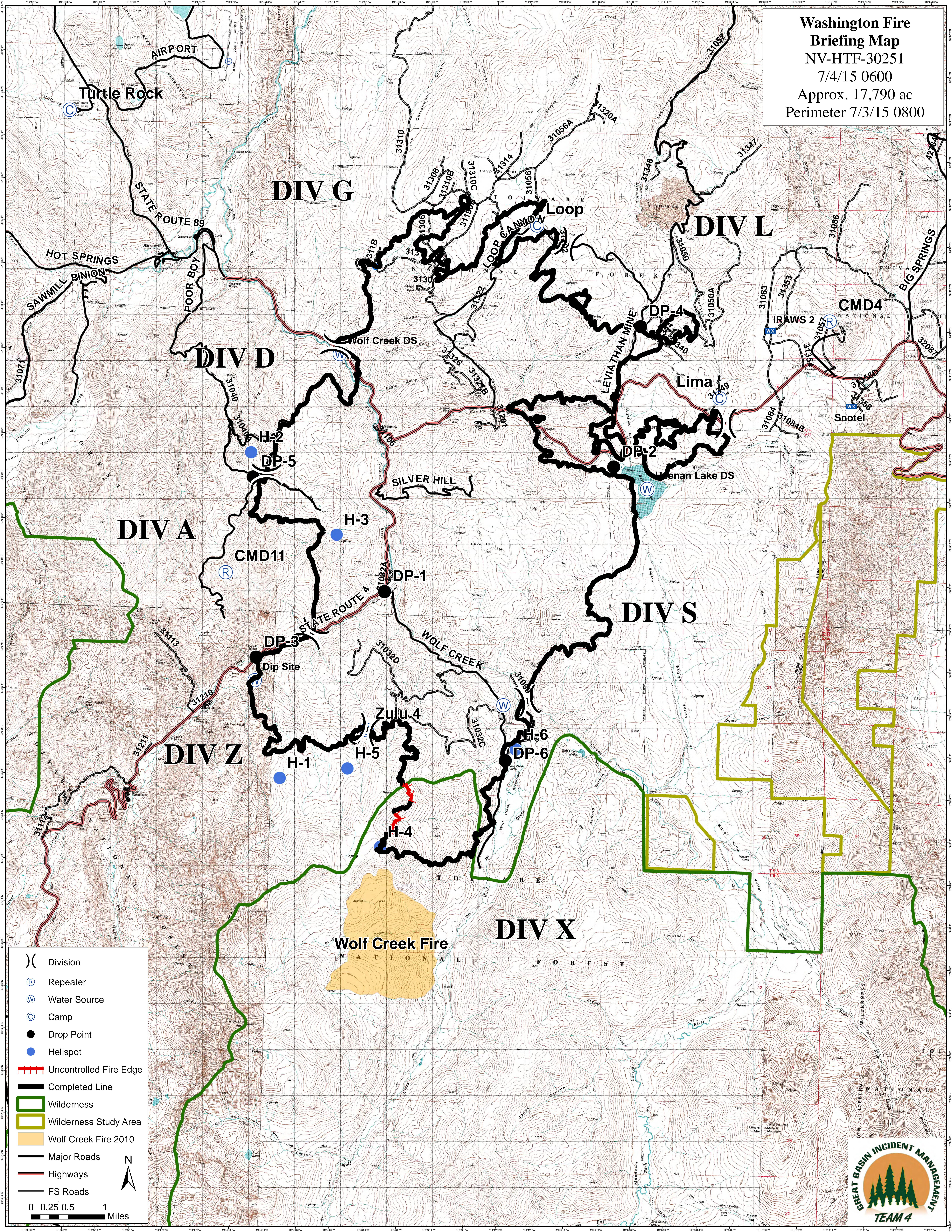


**Washington Fire
Briefing Map**
 NV-HTF-30251
 7/4/15 0600
 Approx. 17,790 ac
 Perimeter 7/3/15 0800



) (Division
 Ⓡ Repeater
 Ⓜ Water Source
 Ⓒ Camp
 ● Drop Point
 ● Helispot
 [Red dashed line] Uncontrolled Fire Edge
 [Black solid line] Completed Line
 [Green outline] Wilderness
 [Yellow outline] Wilderness Study Area
 [Yellow shaded area] Wolf Creek Fire 2010
 [Thick black line] Major Roads
 [Red line] Highways
 [Thin black line] FS Roads

N
 0 0.25 0.5 1 Miles

