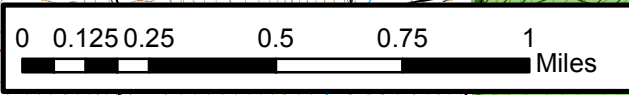
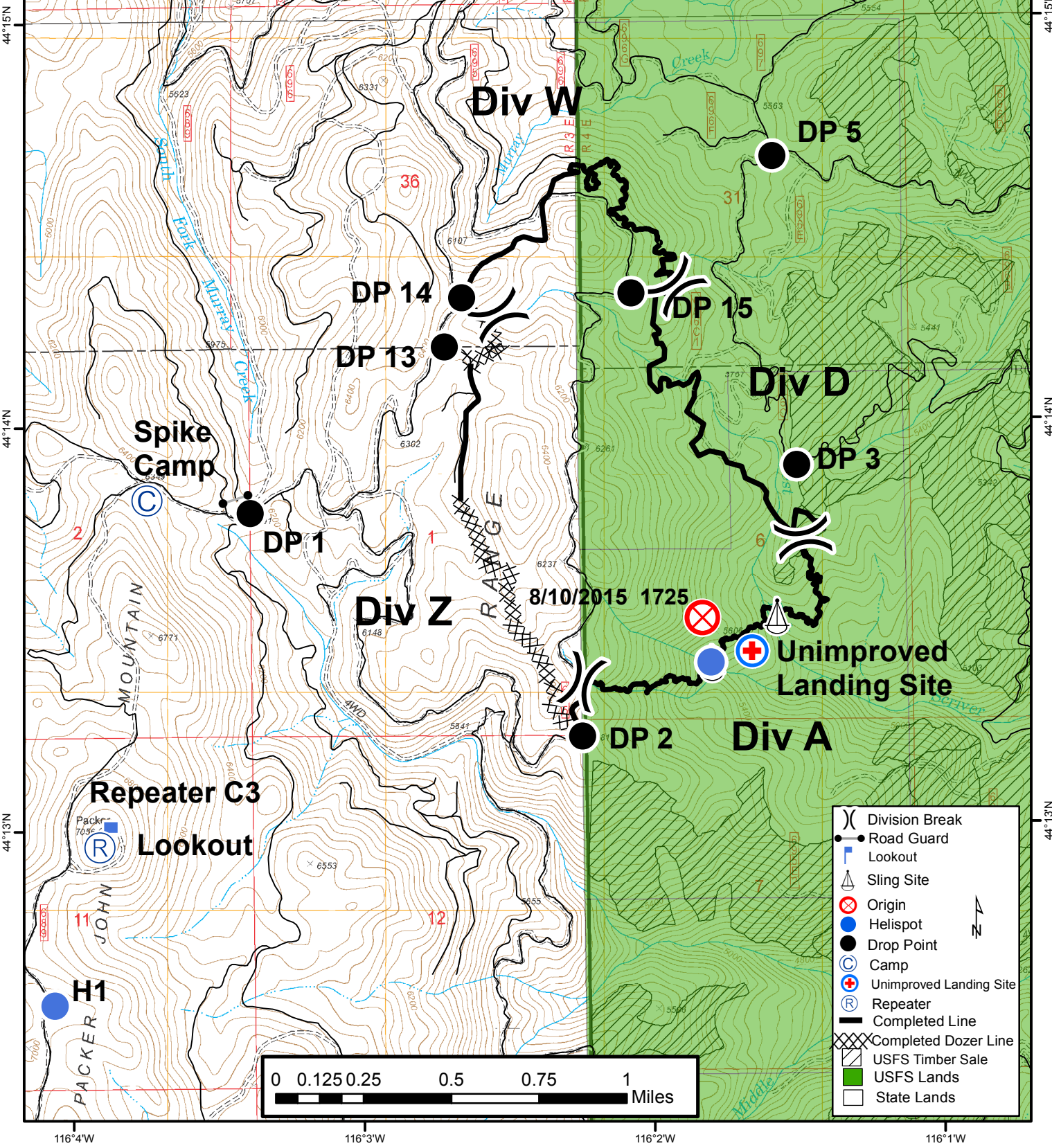


116°4'W 116°3'W 116°2'W 116°1'W

West Scriver Fire
ID-SIS-000176
PNJ09U (1502)
Aug 27, 2015
Day Shift
Approximately 576 acres
08/19/15 1530 hrs
NAD83
LJS



Type	Name	Degrees	Decimal	Minutes
Helispot	H1	44	12.56801N	116 04.06290W
Helispot		44	13.40272N	116 01.78968W
Medivac		44	13.42827N	116 01.64780W
Sling Site	Sling Site #1	44	13.39886N	116 01.78646W
Sling Site	Sling Site #2	44	13.51409N	116 01.56197W



- Division Break
- Road Guard
- Lookout
- Sling Site
- Origin
- Helispot
- Drop Point
- Camp
- Unimproved Landing Site
- Repeater
- Completed Line
- Completed Dozer Line
- USFS Timber Sale
- USFS Lands
- State Lands



44°15'N 44°14'N 44°13'N

116°4'W 116°3'W 116°2'W 116°1'W

Div W

Div Z

Div A

Div D

DP 1

DP 2

DP 3

DP 13

DP 14

DP 15

DP 5

Spike Camp

Repeater C3 Lookout

H1

8/10/2015 1725

Unimproved Landing Site

PACKER MOUNTAIN

JOHN MOUNTAIN

South Fork Murray Creek

Murray Creek

North Fork Murray Creek

PACKER RANGE

USFS Lands

State Lands