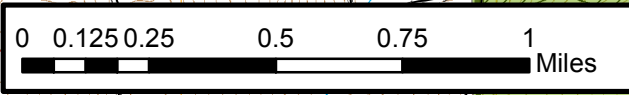
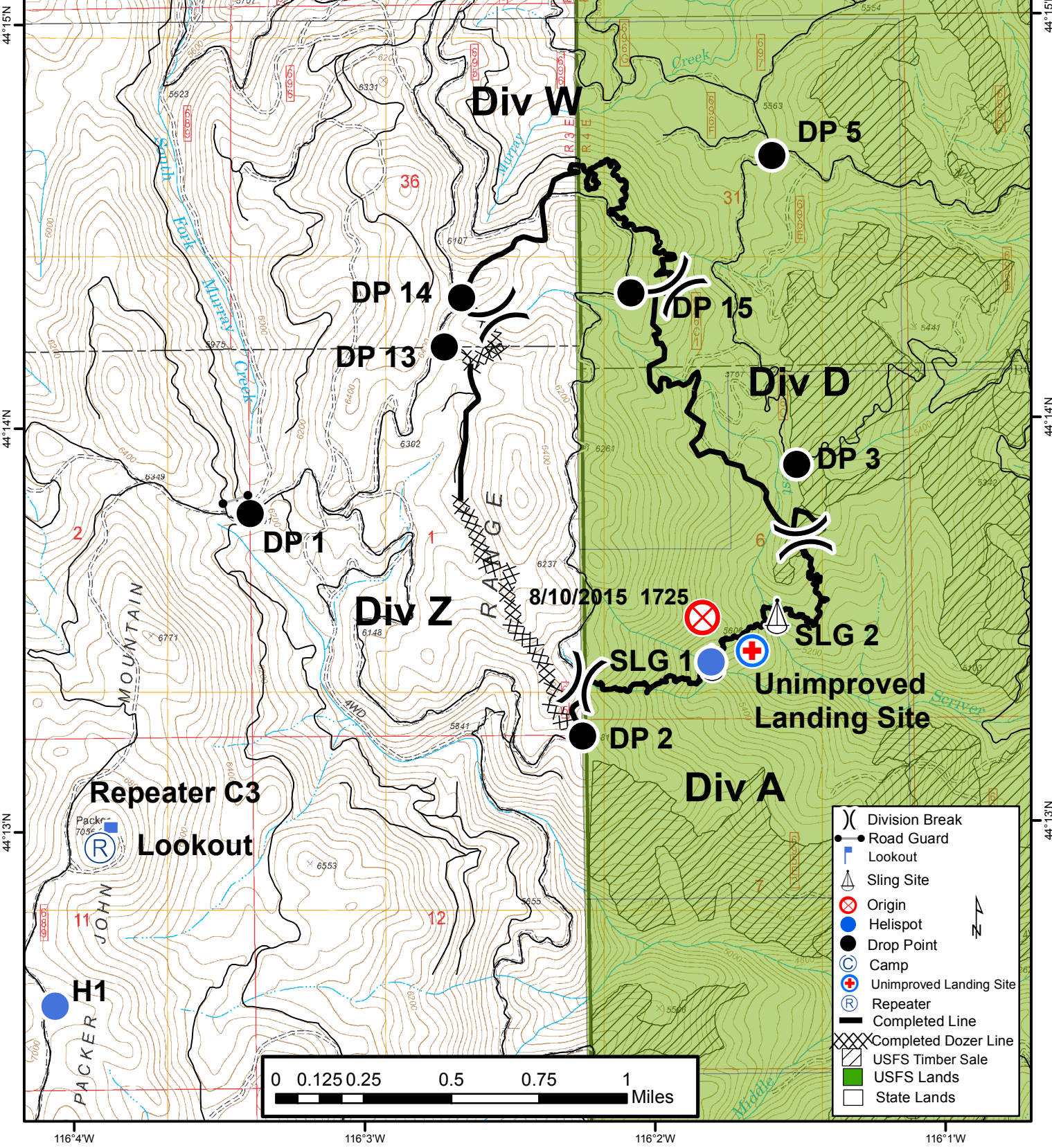


116°4'W 116°3'W 116°2'W 116°1'W

**West Scriver Fire**  
**ID-SIS-000176**  
**PNJ09U (1502)**  
**Aug 29, 2015**  
**Day Shift**  
**Approximately 576 acres**  
**08/19/15 1530 hrs**  
**NAD83**  
**LJS**



Type	Name	Degrees	Decimal	Minutes
Helispot	H1	44	12.56801N	116 04.06290W
Helispot		44	13.40272N	116 01.78968W
Medivac		44	13.42827N	116 01.64780W
Sling Site	Sling Site #1	44	13.39886N	116 01.78646W
Sling Site	Sling Site #2	44	13.51409N	116 01.56197W



- Division Break
- Road Guard
- Lookout
- Sling Site
- Origin
- Helispot
- Drop Point
- Camp
- Unimproved Landing Site
- Repeater
- Completed Line
- Completed Dozer Line
- USFS Timber Sale
- USFS Lands
- State Lands



44°15'N 44°14'N 44°13'N

116°4'W 116°3'W 116°2'W 116°1'W

Div W

Div Z

Div D

Div A

DP 1

DP 2

DP 3

DP 13

DP 14

DP 15

DP 5

SLG 1

SLG 2

Unimproved Landing Site

Repeater C3

Lookout

H1

8/10/2015 1725

PACKER MOUNTAIN

JOHN MOUNTAIN

South Fork Murray Creek

Murray Creek

North Fork Murray Creek

Scriver Creek

Mudate Creek

Range

USFS Lands

State Lands