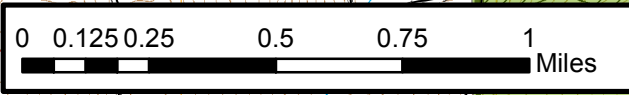
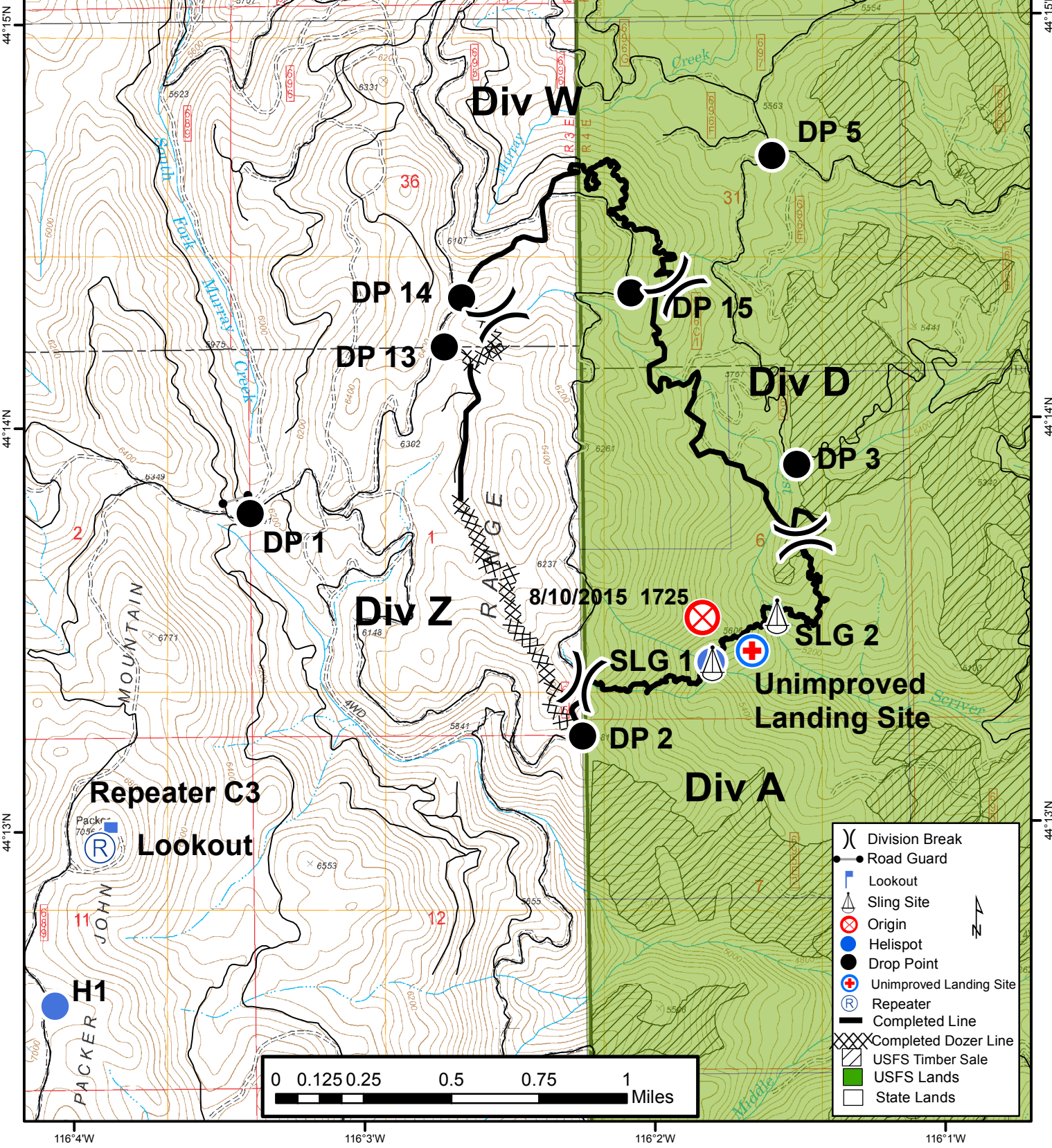


116°4'W 116°3'W 116°2'W 116°1'W

**West Scriver Fire**  
**ID-SIS-000176**  
**PNJ09U (1502)**  
**Aug 30, 2015**  
**Day Shift**  
**Approximately 576 acres**  
**08/19/15 1530 hrs**  
**NAD83**  
**LJS**



Type	Name	Degrees	Decimal	Minutes
Helispot	H1	44	12.56801N	116 04.06290W
Helispot		44	13.40272N	116 01.78968W
Medivac		44	13.42827N	116 01.64780W
Sling Site	Sling Site #1	44	13.39886N	116 01.78646W
Sling Site	Sling Site #2	44	13.51409N	116 01.56197W



- ( ) Division Break
- Road Guard
- ⌚ Lookout
- ⚓ Sling Site
- ⊕ Origin
- Helispot
- Drop Point
- ⊕ Unimproved Landing Site
- Ⓡ Repeater
- Completed Line
- ⊗ Completed Dozer Line
- ▨ USFS Timber Sale
- ▨ USFS Lands
- State Lands



44°15'N 44°14'N 44°13'N

116°4'W 116°3'W 116°2'W 116°1'W

Div W

Div Z

Div D

Div A

DP 1

DP 2

DP 3

DP 13

DP 14

DP 15

DP 5

SLG 1

SLG 2

Unimproved Landing Site

Repeater C3

Lookout

H1

8/10/2015 1725

PACKER MOUNTAIN

JOHN MOUNTAIN

South Fork Murray Creek

Murray Creek

North Fork Murray Creek

Scriver Creek

Mudate Creek

Range

R 3 E

R 4 E

R 5 E

25

36

31

6

11

12

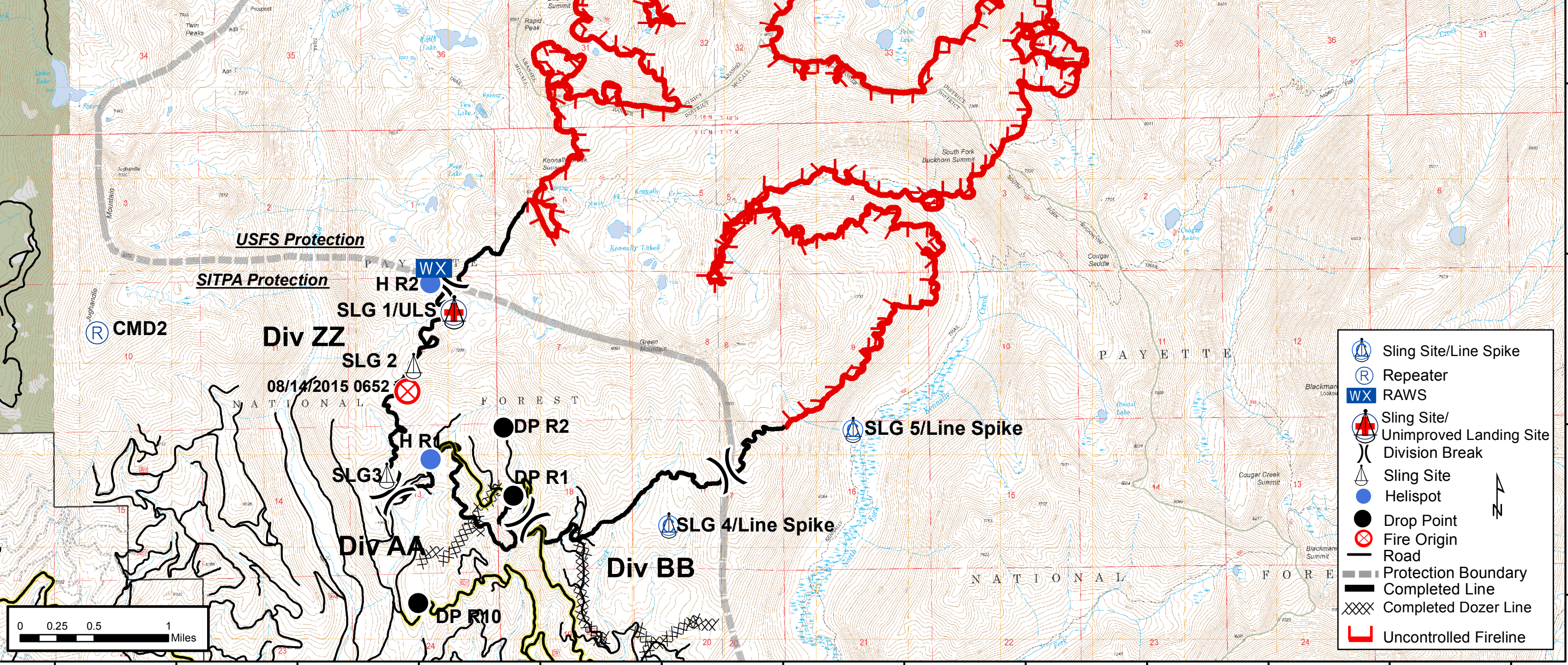


115°58'W 115°57'W 115°56'W 115°55'W 115°54'W 115°53'W 115°52'W 115°51'W 115°50'W 115°49'W 115°48'W 115°47'W 115°46'W

**Rapid Fire**  
**ID-SIS-00208**  
**PNJ1MA (1502)**  
**Aug 30, 2015**  
**Day Shift**  
**Approximately 6422 acres**  
**08/28/15 2121 hrs**  
**NAD83**  
**LJS**



Type	Name	Lat/Long
Helispot	HR1	44 48.89234N 115 54.88460W
Helispot	HR2	44 49.92490N 115 54.86757W
Helispot	Paddy Flat H	44 46.50760N 115 56.94267W
SlingSite/UnimprvdLndSite	SLG1/ULS	44 49.75257N 115 54.67579W
Sling Site	SLG 2	44 49.44073N 115 55.01569W
Sling Site	SLG 3	44 48.79820N 115 55.25032W
Sling Site/Line Spike	SLG 4/Line Spike	44 48.48472N 115 52.93086W
Sling Site/Line Spike	SLG 5/Line Spike	44 49.03098N 115 51.39856W

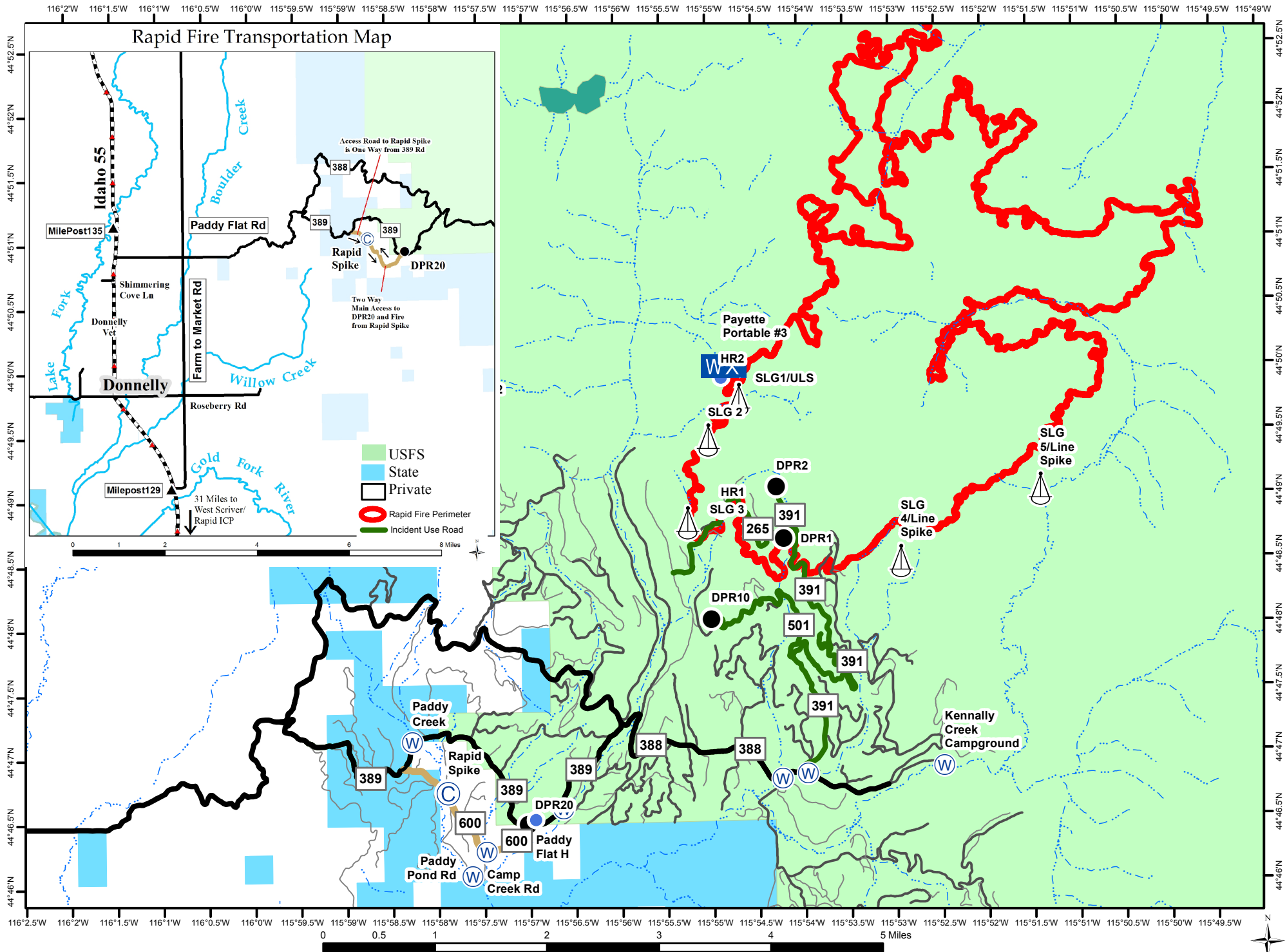


- Sling Site/Line Spike
- Repeater
- RAWS
- Sling Site/Unimproved Landing Site
- Division Break
- Sling Site
- Helispot
- Drop Point
- Fire Origin
- Road
- Protection Boundary
- Completed Line
- Completed Dozer Line
- Uncontrolled Fireline

115°58'W 115°57'W 115°56'W 115°55'W 115°54'W 115°53'W 115°52'W 115°51'W 115°50'W 115°49'W 115°48'W 115°47'W 115°46'W



# Rapid Fire Transportation Map



# West Scriver Incident Transportation Map

