

116°2'W

44°15'N

West Scriver Fire

Heat Acres: 525

ID-SIS-000176

Infrared Interpretation

Imagery Date:

08/14/2015 2055 Hrs



1:10,000

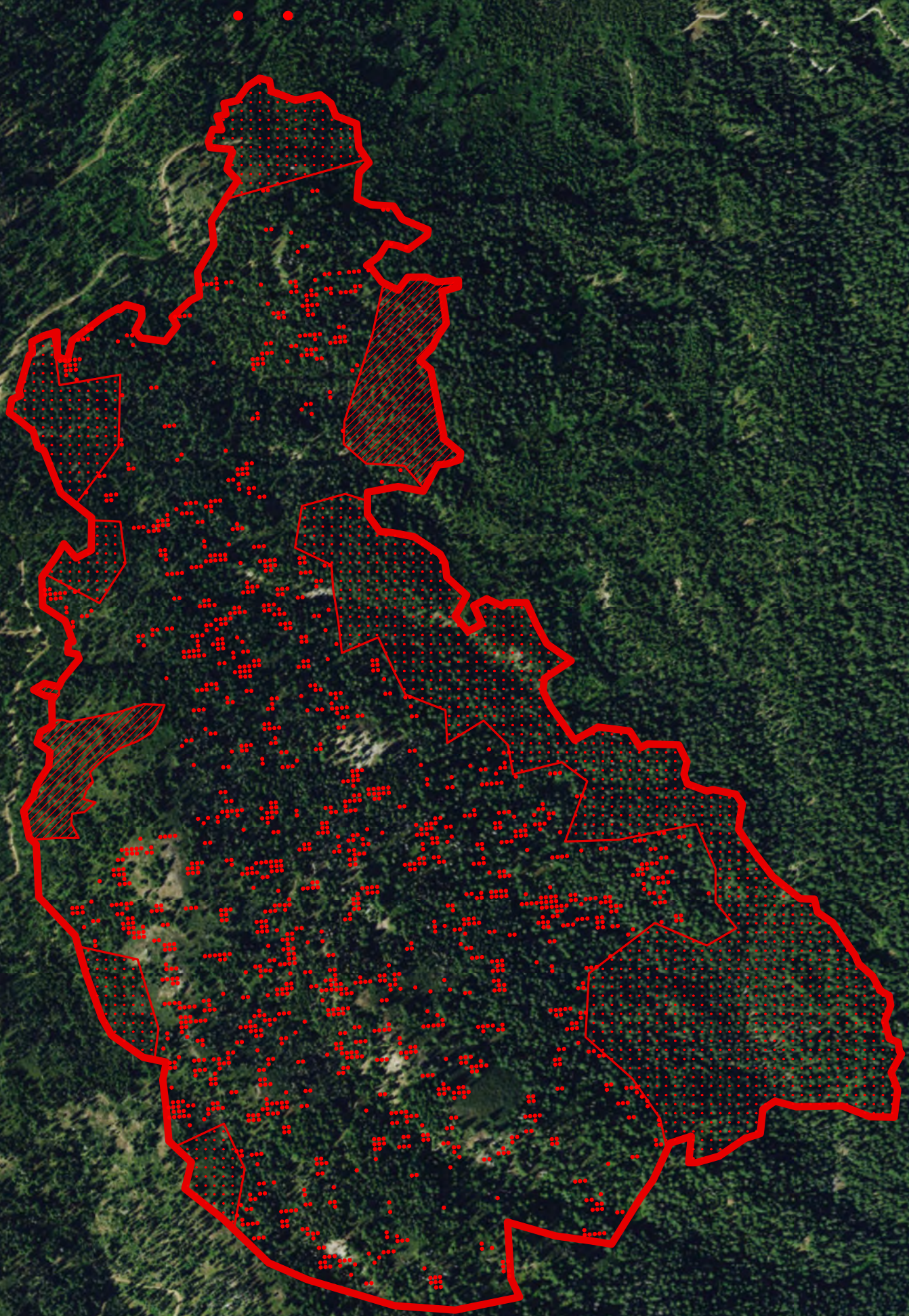






44°14'N

44°14'N

44°13'N

44°13'N



-  Heat Perimeter
-  Intense Heat Areas
-  Scattered Heat Areas
-  Isolated Heat Sources

NAD 1983 UTM Zone 10N

IRIN: K Felker
Map produced:
8/14/2015 2115 hrs

0 500 1,000 2,000



Map data: GeoEye, Earthstar, Getmapping, Aerogrid, IGN, IGP, swisstopo,

116°3'W

116°2'W