

116°3'W

116°2'W

116°1'W

West Scriver Fire

Heat Acres: 608

ID-SIS-000176

Infrared Interpretation

Imagery Date:

08/16/2015 1936 Hrs



1:12,000



44°15'N

44°15'N

44°14'N

44°14'N

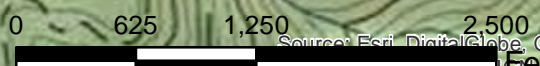
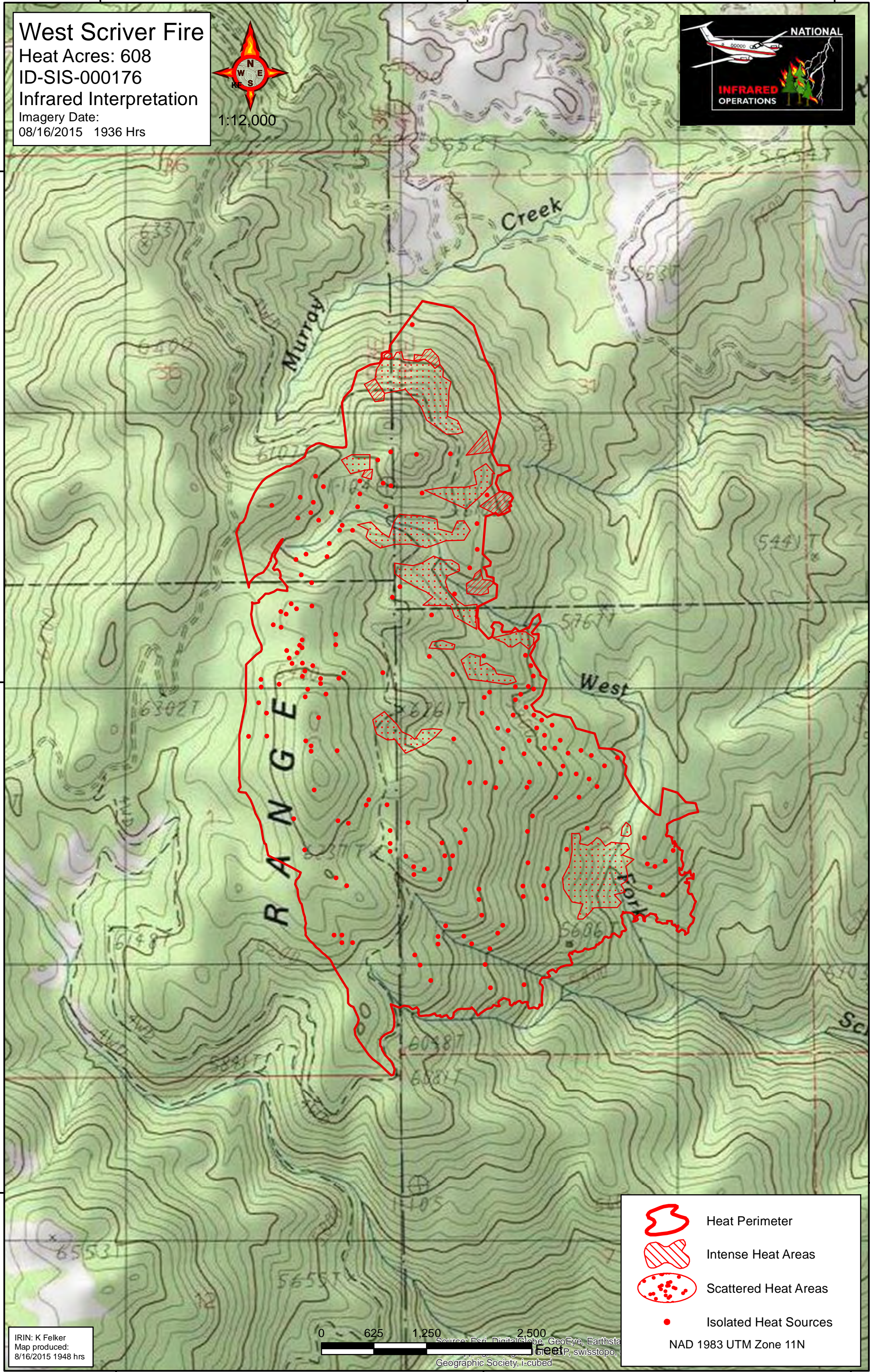
44°13'N

44°13'N





116°3'W

116°2'W

116°1'W



IRIN: K Felker
Map produced:
8/16/2015 1948 hrs

-  Heat Perimeter
-  Intense Heat Areas
-  Scattered Heat Areas
-  Isolated Heat Sources

NAD 1983 UTM Zone 11N

Source: Esri, DigitalGlobe, GeoEye, Earthstar, CNR, GEBCO, Swisstopo, IGN, etc.
© 2015 Geographic Society, i-cubed