

Berry Fire Briefing Map

WY-GTP-001621

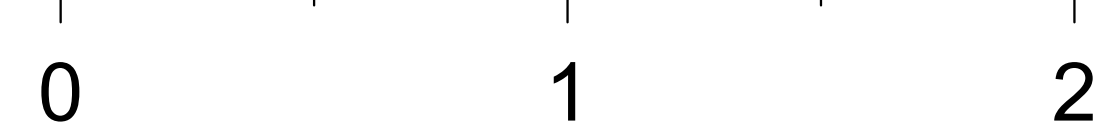
Operational Period
8/25/2016

12,279 acres
8/24/2016
1700 hrs

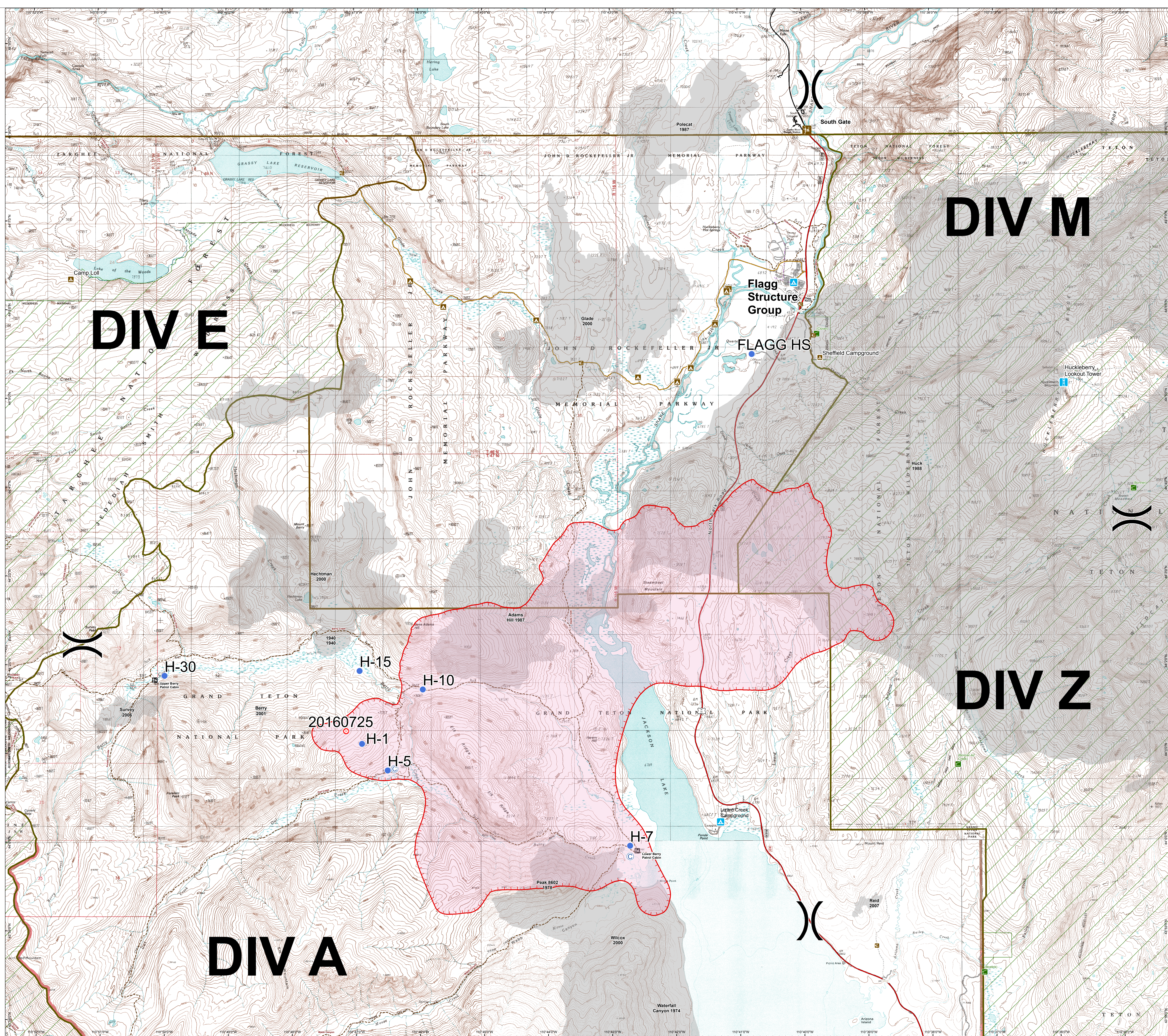
- Uncontrolled Fire Edge
- Camp
- Fire Origin
- Helibase
- Helispot
- Division
- Power line
- Patrol Cabins
- Trailheads
- Campgrounds
- Outfitter & Guide Locations
- Trails
- Fire History
- Wilderness Area Boundaries
- Administrative Boundaries



Miles



NAD 1983
UTM Zone 12 N



DIV E

DIV M

DIV Z

DIV A

Flagg Structure Group

FLAGG HS

H-30

H-15

H-10

20160725

H-1

H-5

H-7

Lewis Berry Patrol Cabin

Lizard Creek Campground

Wilcox 2000

Peak 8602 1978

Waterfall Canyon 1974

Reid 2007

Arizona Island

Pollock 1987

South Gate

Polecat 1987

Glade 2000

Hickman 2000

Adams Hill 1987

1940 1940

Berry 2001

Survey 2006

Camp Lodi

Sheffield Campground

Huckleberry Lookout Tower

Huck 1988