






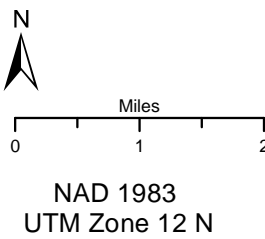
# Berry Fire Air Operations Pilot Map

WY-GTP-001621

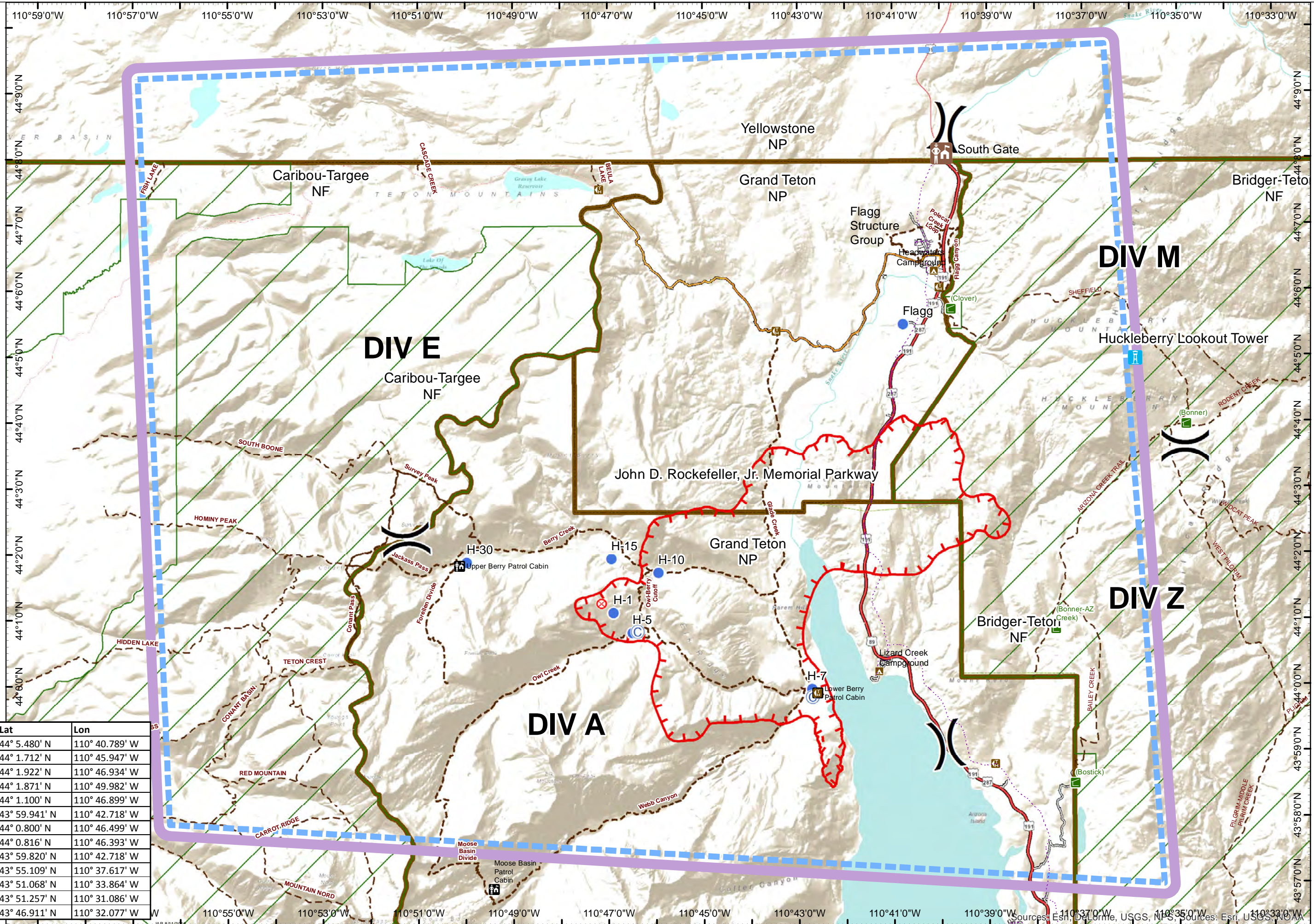
Operational  
Period  
8/26/2016

12,279 acres  
8/24/2016  
1700 hrs

-  Camp
-  Fire Origin
-  Helispot
-  Division
-  TFR\_6/1119
-  Power line
-  Outfitter & Guide Locations
-  Trailheads
-  Campgrounds
-  Trails
-  Fire History
-  Wilderness Area Boundaries
-  Administrative Boundaries



Point Type	Label	Lat	Lon
Helispot	Flagg	44° 5.480' N	110° 40.789' W
Helispot	H-10	44° 1.712' N	110° 45.947' W
Helispot	H-15	44° 1.922' N	110° 46.934' W
Helispot	H-30	44° 1.871' N	110° 49.982' W
Helispot	H-1	44° 1.100' N	110° 46.899' W
Helispot	H-7	43° 59.941' N	110° 42.718' W
Helispot	H-5	44° 0.800' N	110° 46.499' W
Camp	Owl	44° 0.816' N	110° 46.393' W
Camp	Lower Berry	43° 59.820' N	110° 42.718' W
Helibase	Colter	43° 55.109' N	110° 37.617' W
Repeater	Summit	43° 51.068' N	110° 33.864' W
Camp	Pacific Spike	43° 51.257' N	110° 31.086' W
ICP	ICP	43° 46.911' N	110° 32.077' W



Sources: Esri, DeLorme, USGS, NPS, Sources: Esri, USGS, NOAA