

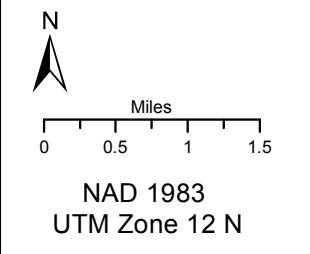
Berry Fire Air Operations Pilot Map

WY-GTP-001621

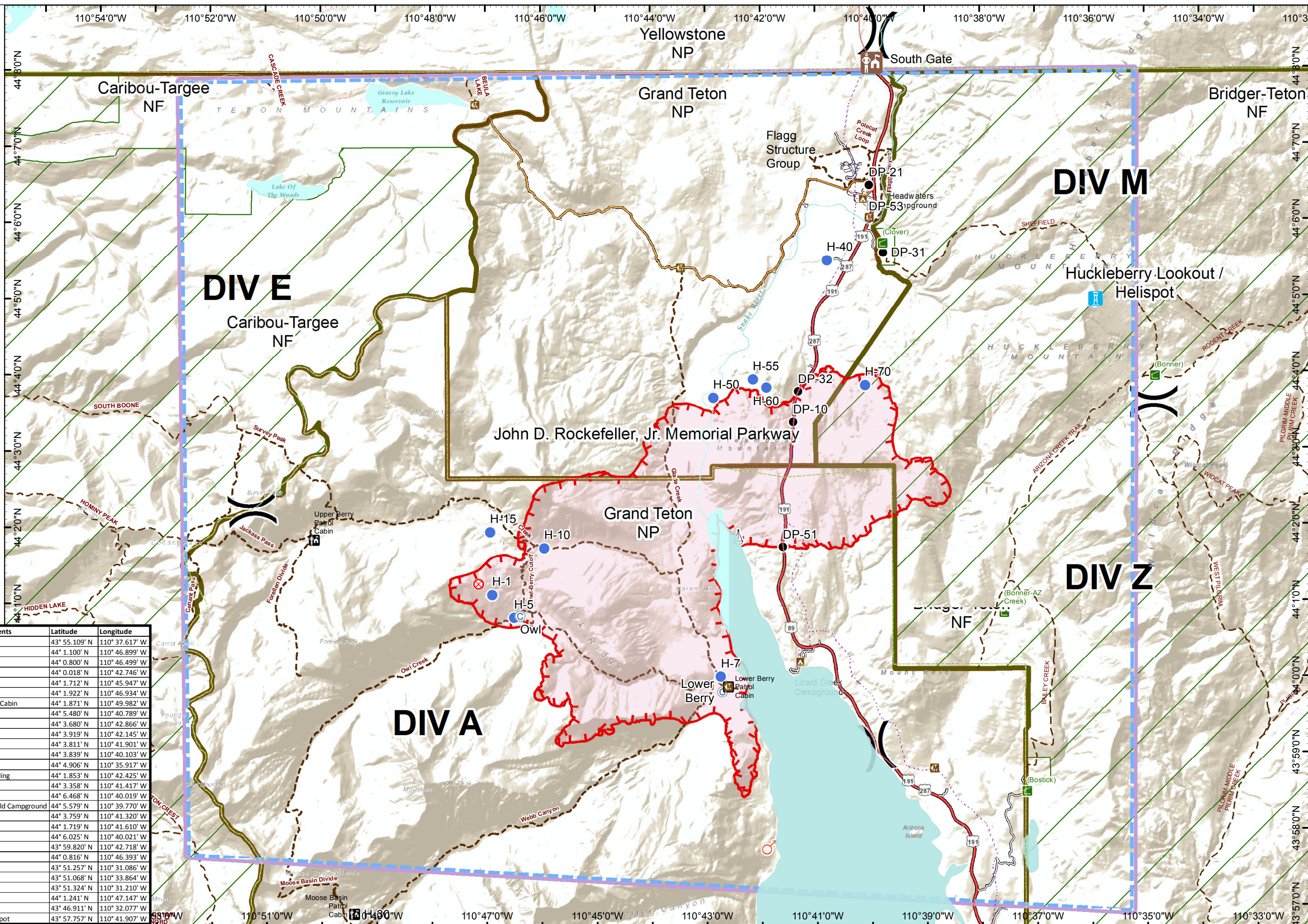
Operational
Period
8/27/2016

12,378 acres
8/26/2016
1000 hrs

- () Division
- Drop Point
- Helispot
- △ Sling Site
- Ⓢ TFR legend
- Power line
- 🏠 Outfitter & Guide Locations
- 🏠 Trailheads
- 🏠 Campgrounds
- Trails
- 🗑️ Fire History Not Used
- 🌿 Wilderness Area Boundaries
- 📏 Administrative Boundaries
- Ⓢ Camp
- Ⓢ Repeater
- Ⓢ Spot Fire
- Ⓢ Fire Origin



Point Type	Label	Comments	Latitude	Longitude
Helibase		Colter	43° 55.109' N	110° 37.617' W
Helispot	H-1		44° 1.100' N	110° 46.899' W
Helispot	H-5		44° 0.800' N	110° 46.499' W
Helispot	H-7	Type II	44° 0.018' N	110° 42.746' W
Helispot	H-10		44° 1.712' N	110° 45.947' W
Helispot	H-15		44° 1.922' N	110° 46.934' W
Helispot	H-30	Moose Cabin	44° 1.871' N	110° 49.982' W
Helispot	H-40	Flagg	44° 5.480' N	110° 40.789' W
Helispot	H-50	Type II	44° 3.680' N	110° 42.866' W
Helispot	H-55		44° 3.919' N	110° 42.145' W
Helispot	H-60	Type III	44° 3.811' N	110° 41.901' W
Helispot	H-70	Type II	44° 3.839' N	110° 40.103' W
Helispot	Huckleberry Lookout	Type III	44° 4.906' N	110° 35.917' W
Sling Site		Alpha Sling	44° 1.853' N	110° 42.425' W
Drop Point	DP-10		44° 3.358' N	110° 41.417' W
Drop Point	DP-21		44° 6.468' N	110° 40.019' W
Drop Point	DP-31	Sheffield Campground	44° 5.579' N	110° 39.770' W
Drop Point	DP-32		44° 3.759' N	110° 41.320' W
Drop Point	DP-51		44° 1.719' N	110° 41.610' W
Drop Point	DP-53		44° 6.025' N	110° 40.021' W
Camp	Lower Berry		43° 59.820' N	110° 42.718' W
Camp	Owl		44° 0.816' N	110° 46.393' W
Camp	Pacific Spike		43° 51.257' N	110° 31.086' W
Repeater	Summit		43° 51.068' N	110° 33.864' W
Weed Wash	Weed Wash		43° 51.324' N	110° 31.210' W
Origin	Point of Origin		44° 1.241' N	110° 47.147' W
ICP		ICP	43° 46.911' N	110° 32.077' W
Spot Fire		Alpha Spot	43° 57.757' N	110° 41.907' W



DIV E

DIV M

DIV A

DIV Z