

Berry Fire IAP Map

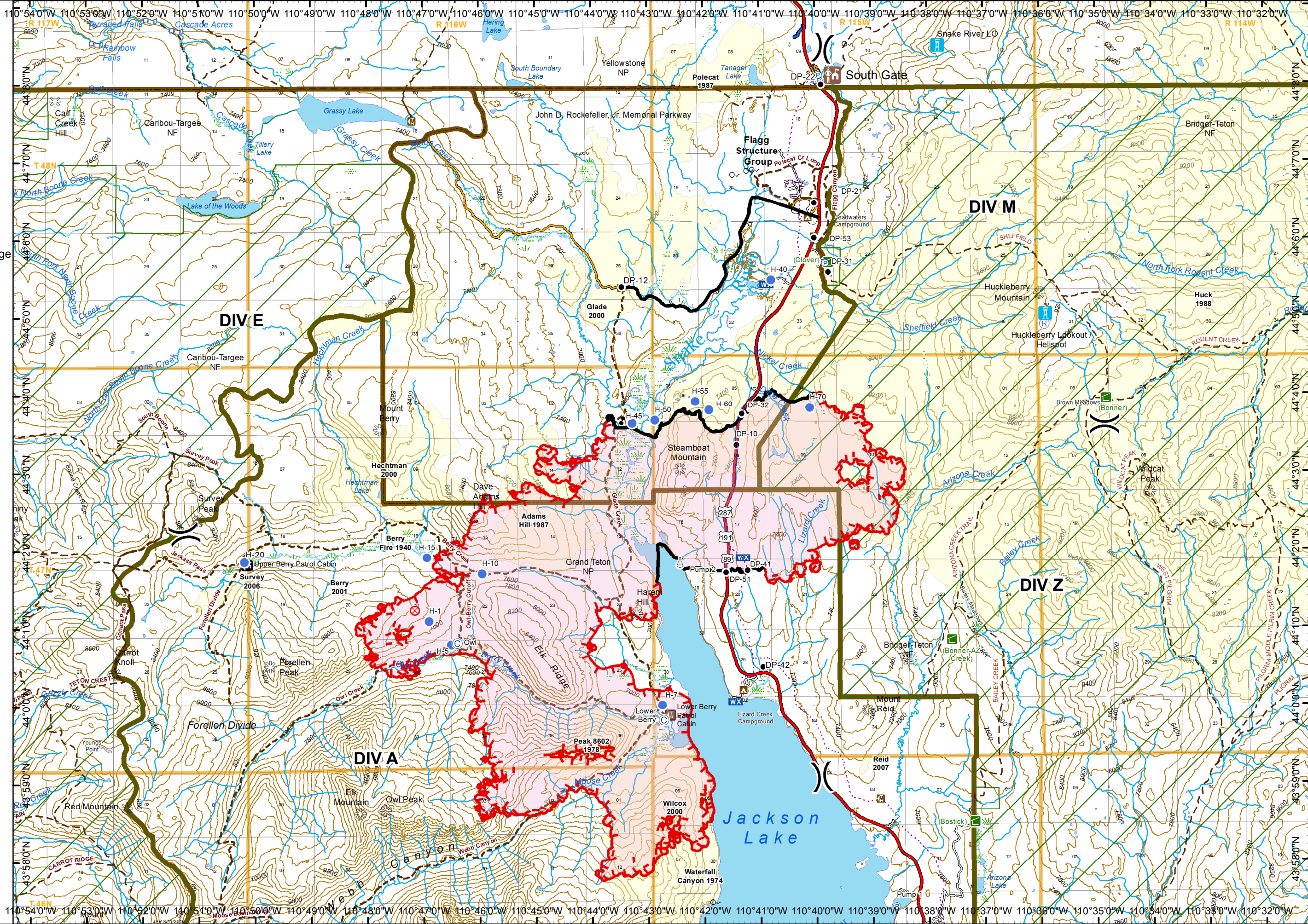
WY-GTP-001621

Operational Period
9/6/2016

14,551 acres
acreage updated
9/2/2016 2059 hrs

- Uncontrolled Fire Edge
- Completed Line
- H - H Hand Line
- Drop Point
- Helispot
- Sling Site
- Pump
- Camp
- Repeater
- Mobile Weather Unit
- Spot Fire
- Fire Origin
- Division
- Power line
- Outfitter & Guide Locations
- Trailheads
- Campgrounds
- Trails
- Wilderness Area Boundaries
- Administrative Boundaries
- Fire History

0 0.5 1 1.5 Miles
NAD 1983
UTM Zone 12 N



110°54'0"W 110°53'0"W 110°52'0"W 110°51'0"W 110°50'0"W 110°49'0"W 110°48'0"W 110°47'0"W 110°46'0"W 110°45'0"W 110°44'0"W 110°43'0"W 110°42'0"W 110°41'0"W 110°40'0"W 110°39'0"W 110°38'0"W 110°37'0"W 110°36'0"W 110°35'0"W 110°34'0"W 110°33'0"W 110°32'0"W