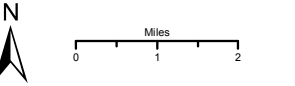


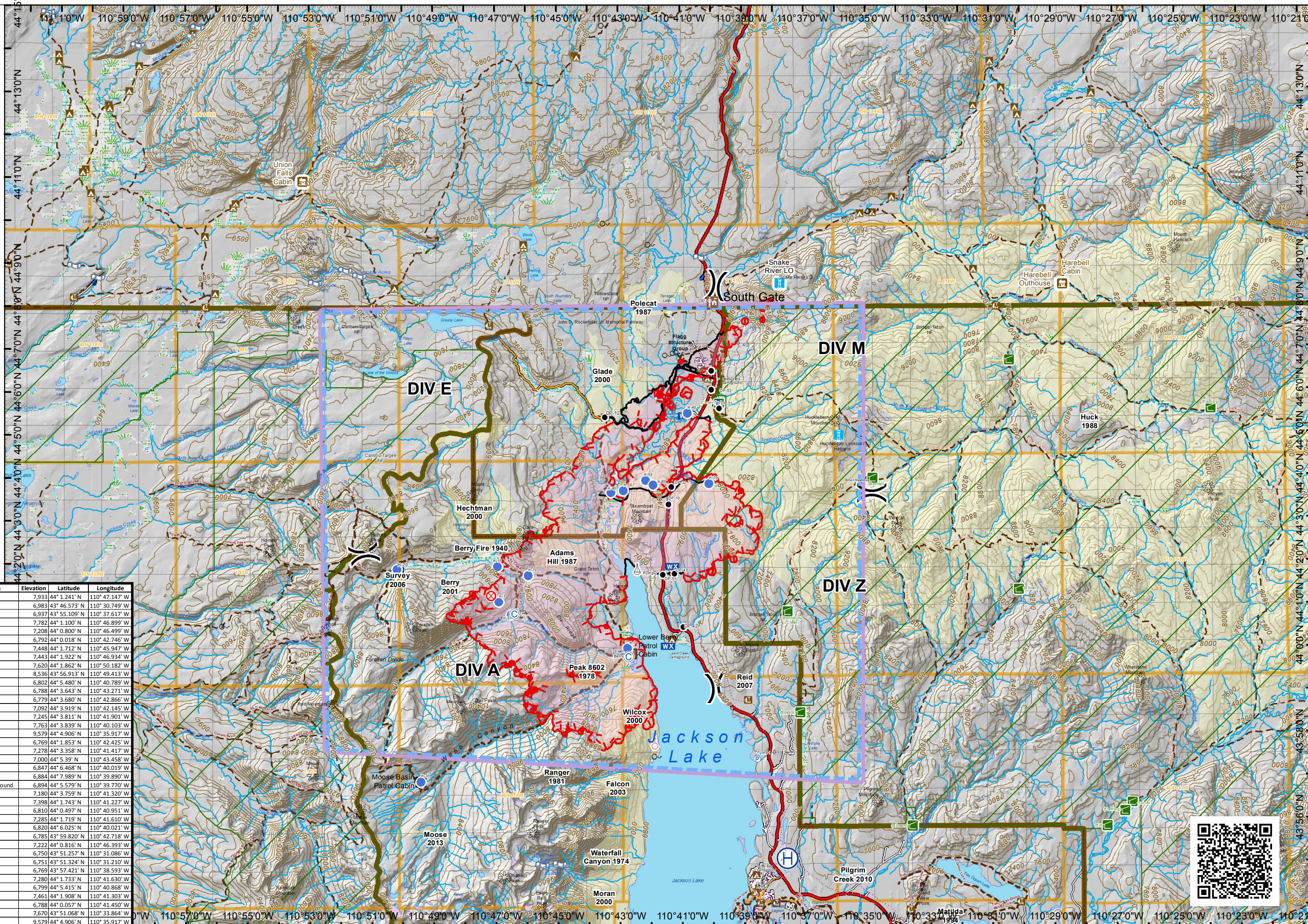
Berry Fire Air Operations Pilot Map WY-GTP-001621

Operational
Period
9/16/2016
20,801 acres
acreage updated
9/12/2210 0058 hrs

- Division
- Camp
- Pump
- Mobile Weather Unit
- Drop Point
- Repeater
- Helispot
- Spot Fire
- Sling Site
- Fire Origin
- TFR
- Fire History
- Power line
- Outfitter & Guide Locations
- Trailheads
- Campgrounds
- Trails
- Wilderness Area Boundaries
- Administrative Boundaries



200' Contour Interval



Type	Label	Comments	Elevation	Latitude	Longitude
Origin		Origin	7,933	44° 1.241' N	110° 47.147' W
ICP		ICP	6,983	43° 46.573' N	110° 30.749' W
Helibase		Colter	6,937	43° 55.109' N	110° 37.617' W
Helispot	H-1		7,782	44° 1.100' N	110° 46.899' W
Helispot	H-5		7,208	44° 0.800' N	110° 46.499' W
Helispot	H-7	Type II	6,792	44° 0.018' N	110° 42.746' W
Helispot	H-10		7,448	44° 1.712' N	110° 45.947' W
Helispot	H-15		7,443	44° 1.922' N	110° 46.934' W
Helispot	H-20	Type II	7,620	44° 1.862' N	110° 50.182' W
Helispot	H-30	Moose Cabin	8,536	43° 56.913' N	110° 49.413' W
Helispot	H-40	Flagg	6,802	44° 5.480' N	110° 40.789' W
Helispot	H-45	DIV E Spike Camp	6,788	44° 3.643' N	110° 43.271' W
Helispot	H-50	Type II	6,779	44° 3.680' N	110° 42.866' W
Helispot	H-55		7,092	44° 3.919' N	110° 42.145' W
Helispot	H-60	Type III	7,245	44° 3.811' N	110° 41.901' W
Helispot	H-70	Type II	7,763	44° 3.839' N	110° 40.103' W
Helispot		Huckleberry	9,579	44° 4.906' N	110° 35.917' W
Sling Site		Alpha Sling	6,769	44° 1.853' N	110° 42.425' W
Drop Point	DP-10		7,278	44° 3.358' N	110° 41.417' W
Drop Point	DP-12		7,000	44° 5.39' N	110° 43.458' W
Drop Point	DP-21		6,847	44° 6.468' N	110° 40.019' W
Drop Point	DP-22	South Gate	6,884	44° 7.989' N	110° 39.890' W
Drop Point	DP-31	Sheffield Campground	6,894	44° 5.579' N	110° 39.770' W
Drop Point	DP-32		7,180	44° 3.759' N	110° 41.320' W
Drop Point	DP-41		7,398	44° 1.743' N	110° 41.227' W
Drop Point	DP-42		6,810	44° 0.497' N	110° 40.951' W
Drop Point	DP-51		7,285	44° 1.719' N	110° 41.610' W
Drop Point	DP-53		6,820	44° 6.025' N	110° 40.021' W
Camp	Lower Berry		6,785	43° 59.820' N	110° 42.718' W
Camp	Owl		7,222	44° 0.816' N	110° 46.393' W
Camp	Pacific Spike		6,750	43° 51.257' N	110° 31.086' W
Other		Weed Wash	6,751	43° 51.324' N	110° 31.210' W
Pump	Pump 1	gbk-0148-1110	6,769	43° 57.421' N	110° 38.593' W
Pump	Pump 2	gbk-0148-117	7,280	44° 1.733' N	110° 41.630' W
Weather Station		27	6,799	44° 5.415' N	110° 40.868' W
Weather Station		28	7,461	44° 1.908' N	110° 41.303' W
Weather Station		30	6,788	44° 0.057' N	110° 41.450' W
Repeater		Summit	7,670	43° 51.068' N	110° 33.864' W
Repeater		Huckleberry	9,579	44° 4.906' N	110° 35.917' W

