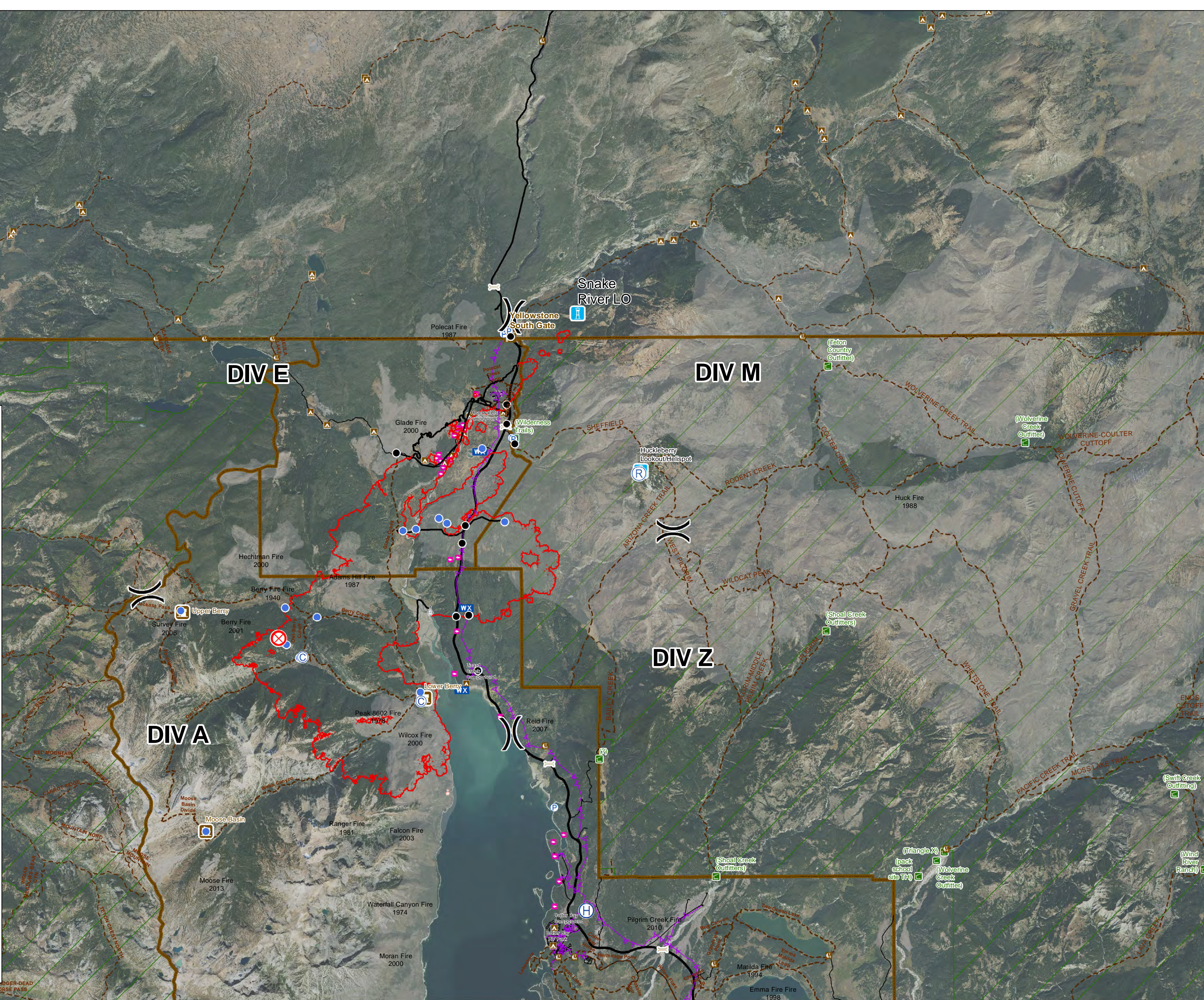


- Camp
- Drop Point
- Fire Origin
- Helibase
- Helispot
- Mobile Weather Unit
- Pump
- Repeater
- Sling Site
- Spot Fire
- Uncontrolled Fire Edge
- Completed Line
- Arch Sites
- Lookout
- Bridges
- Cabin
- Trailheads
- Campgrounds
- Outfitter & Guide Locations
- Trails
- Power Lines
- Fire History
- Administrative Boundaries
- Wilderness Area



NAD83 UTM Zone 12N
 Acreage updated
 09/17/2016 @ 0108 hrs



BERRY FIRE - OPS MAP - 20,825 ACRES

OPERATIONAL PERIOD SEPTEMBER 17, 2016

