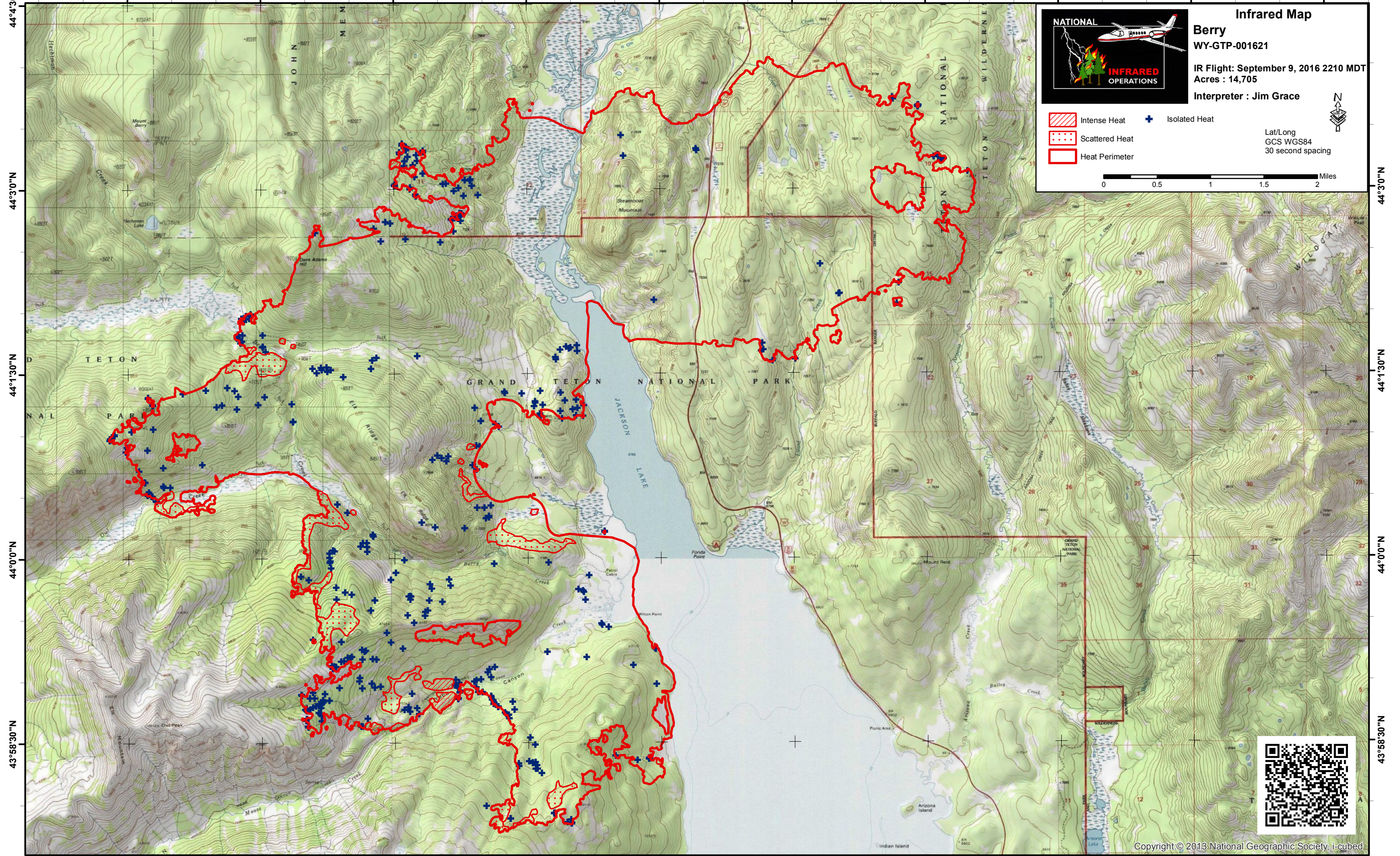


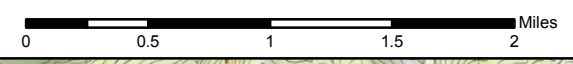
110°48'0"W 110°46'30"W 110°45'0"W 110°43'30"W 110°42'0"W 110°40'30"W 110°39'0"W 110°37'30"W 110°36'0"W 110°34'30"W



**Infrared Map**  
**Berry**  
WY-GTP-001621  
IR Flight: September 9, 2016 2210 MDT  
Acres : 14,705  
Interpreter : Jim Grace

- Intense Heat
- Scattered Heat
- Heat Perimeter
- Isolated Heat

Lat/Long  
GCS WGS84  
30 second spacing



44°4'30"N  
44°3'0"N  
44°1'30"N  
44°0'0"N  
43°58'30"N

44°4'30"N  
44°3'0"N  
44°1'30"N  
44°0'0"N  
43°58'30"N

110°48'0"W 110°46'30"W 110°45'0"W 110°43'30"W 110°42'0"W 110°40'30"W 110°39'0"W 110°37'30"W 110°36'0"W 110°34'30"W

