

110°47'30"W 110°47'0"W 110°46'30"W 110°46'0"W 110°45'30"W 110°45'0"W 110°44'30"W 110°44'0"W

44°2'0"N
44°1'30"N
44°1'0"N
44°0'30"N

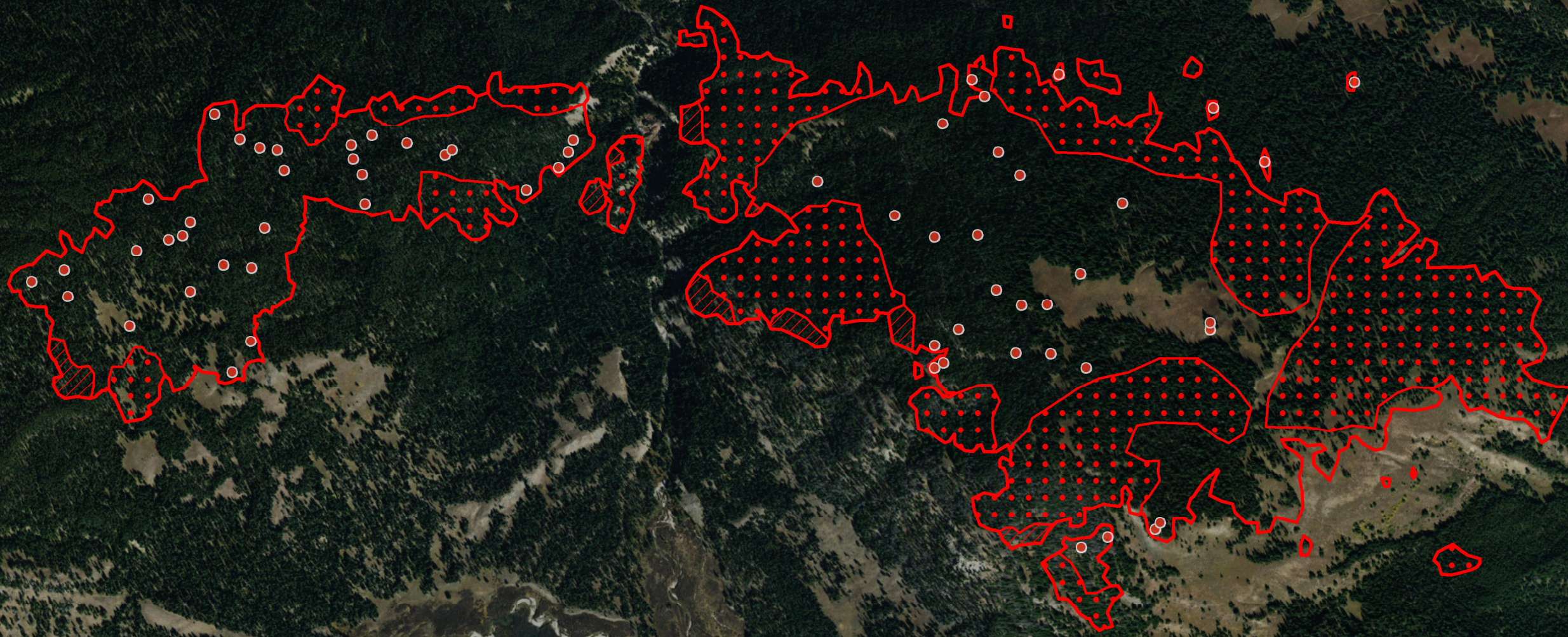
44°2'0"N
44°1'30"N
44°1'0"N
44°0'30"N



Berry Incident WY-GTP-1621 Infrared Map



Imagery Date: 8/18/2016 @ 0205 MDT
Interpreted Acres: 617 acres
IRIN: Maximillian Wahlberg



Legend

- Isolated Heat
- Heat Perimeter
- Intense Heat
- Scattered Heat

Miles

Source: Esri, DigitalGlobe, GeoEye, Earthstar Geographics, CNES/Airbus DS, USDA, USGS, AEX, Getmapping, Aerogrid, IGN, IGP, swisstopo, and the GIS User Community

110°47'30"W 110°47'0"W 110°46'30"W 110°46'0"W 110°45'30"W 110°45'0"W 110°44'30"W 110°44'0"W