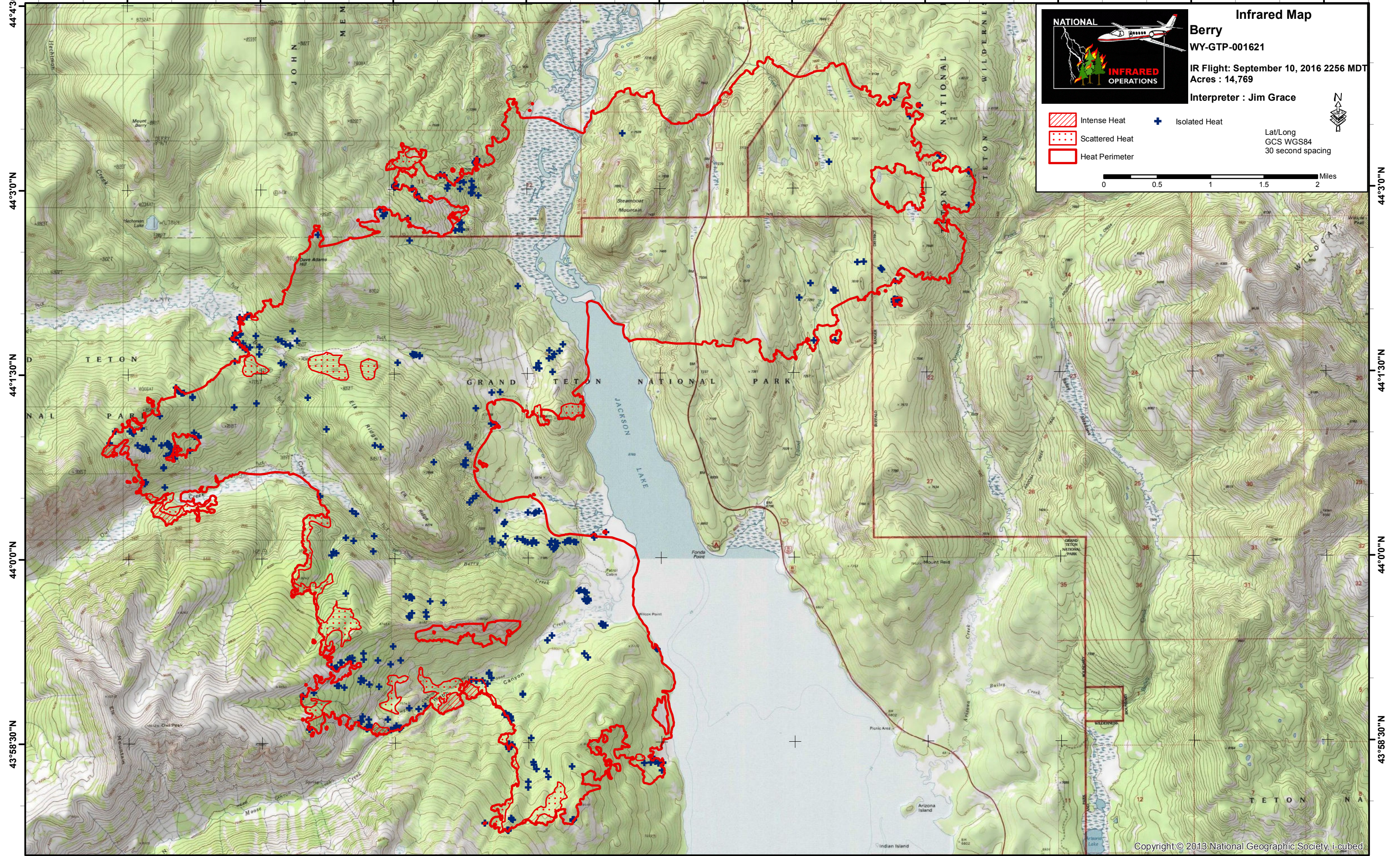


110°48'0"W 110°46'30"W 110°45'0"W 110°43'30"W 110°42'0"W 110°40'30"W 110°39'0"W 110°37'30"W 110°36'0"W 110°34'30"W



**NATIONAL INFRARED OPERATIONS**

**Infrared Map**  
**Berry**  
 WY-GTP-001621

IR Flight: September 10, 2016 2256 MDT  
 Acres : 14,769  
 Interpreter : Jim Grace

Lat/Long  
 GCS WGS84  
 30 second spacing

Intense Heat (Red hatched)  
 Isolated Heat (Blue cross)  
 Scattered Heat (Red dotted)  
 Heat Perimeter (Red outline)

0 0.5 1 1.5 2 Miles

44°4'30"N  
44°3'0"N  
44°1'30"N  
44°0'0"N  
43°58'30"N

44°4'30"N  
44°3'0"N  
44°1'30"N  
44°0'0"N  
43°58'30"N

110°48'0"W 110°46'30"W 110°45'0"W 110°43'30"W 110°42'0"W 110°40'30"W 110°39'0"W 110°37'30"W 110°36'0"W 110°34'30"W