

111°26'W

111°25'W


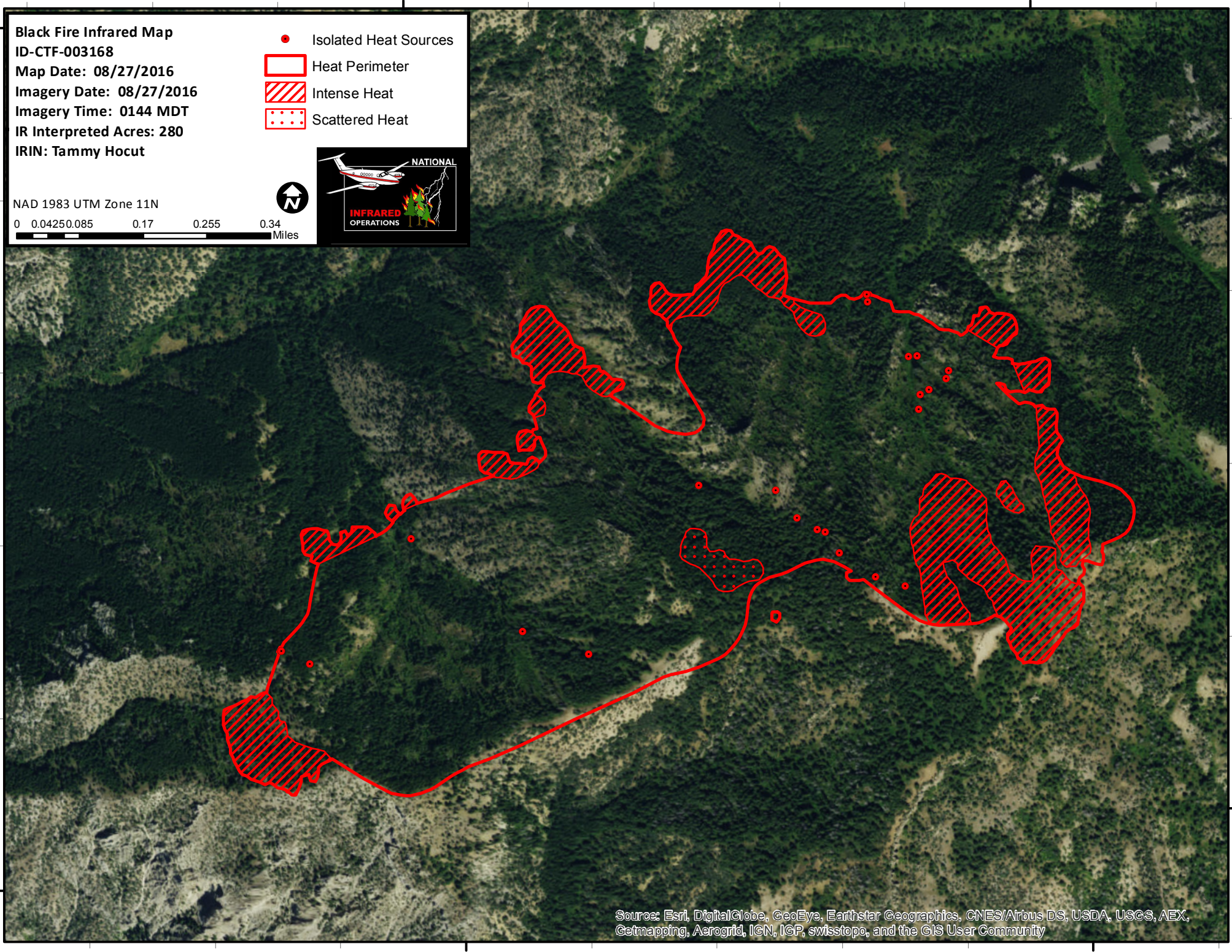
43°36'N

**Black Fire Infrared Map**  
**ID-CTF-003168**  
**Map Date: 08/27/2016**  
**Imagery Date: 08/27/2016**  
**Imagery Time: 0144 MDT**  
**IR Interpreted Acres: 280**  
**IRIN: Tammy Hocut**

- Isolated Heat Sources
- Heat Perimeter
- Intense Heat
- Scattered Heat

NAD 1983 UTM Zone 11N

0 0.04250.085 0.17 0.255 0.34 Miles

43°35'N

43°35'N

111°26'W

111°25'W

Source: Esri, DigitalGlobe, GeoEye, Earthstar Geographics, CNES/Airbus DS, USDA, USGS, AEX, Getmapping, Aerogrid, IGN, IGP, swisstopo, and the GIS User Community