





111°6'0"W 111°5'30"W 111°5'0"W 111°4'30"W 111°4'0"W 111°3'30"W 111°3'0"W 111°2'30"W 111°2'0"W 111°1'30"W 111°1'0"W 111°0'30"W 111°0'0"W 110°59'30"W

40°43'30"N
40°43'0"N
40°42'30"N
40°42'0"N
40°41'30"N
40°41'0"N

40°43'30"N
40°43'0"N
40°42'30"N
40°42'0"N
40°41'30"N
40°41'0"N

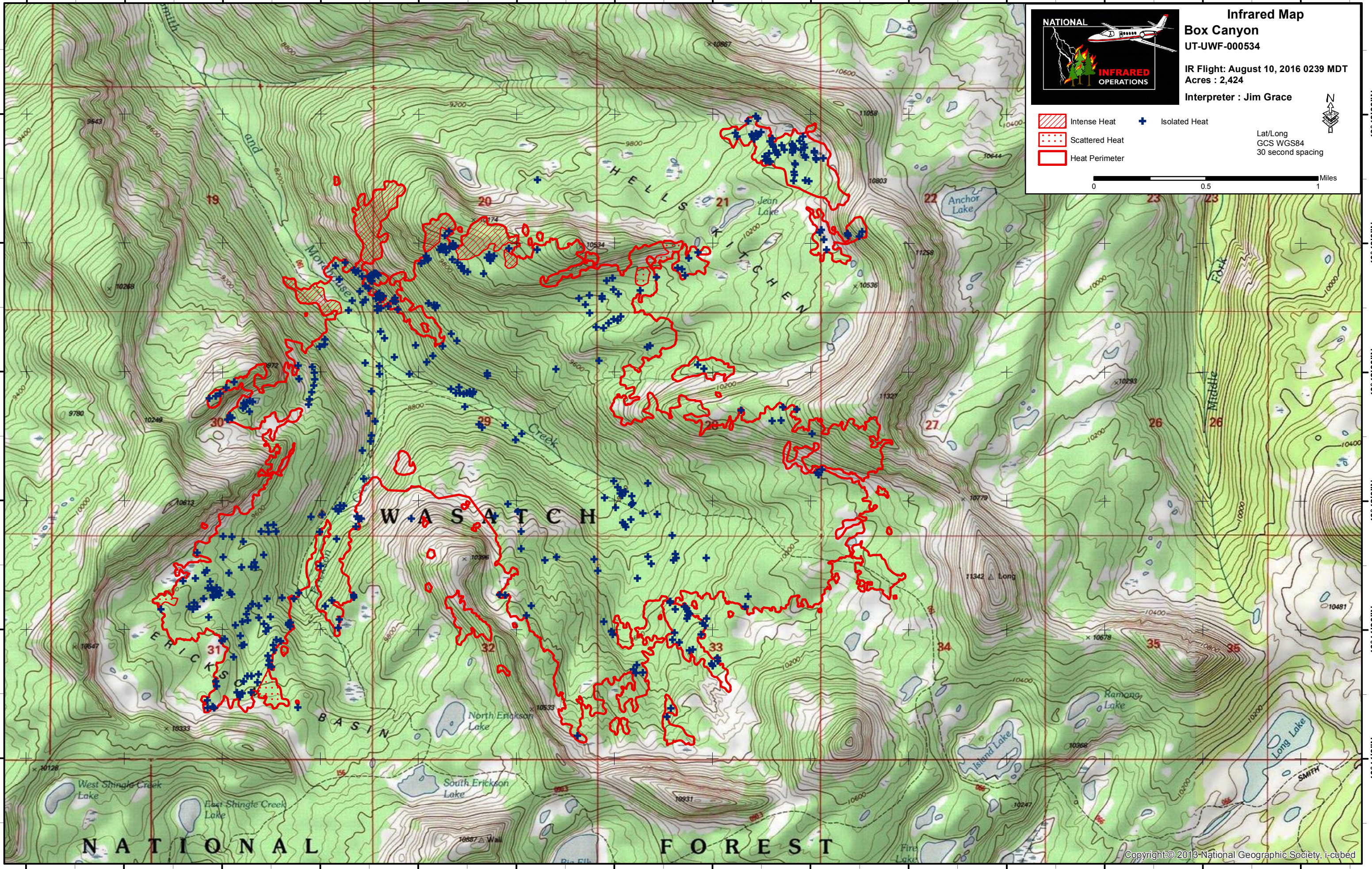


Infrared Map
Box Canyon
UT-UWF-000534
IR Flight: August 10, 2016 0239 MDT
Acres : 2,424
Interpreter : Jim Grace

 Intense Heat  Isolated Heat
 Scattered Heat
 Heat Perimeter

Lat/Long
 GCS WGS84
 30 second spacing

0 0.5 1 Miles



111°6'0"W 111°5'30"W 111°5'0"W 111°4'30"W 111°4'0"W 111°3'30"W 111°3'0"W 111°2'30"W 111°2'0"W 111°1'30"W 111°1'0"W 111°0'30"W 111°0'0"W 110°59'30"W