




111°6'0"W 111°5'30"W 111°5'0"W 111°4'30"W 111°4'0"W 111°3'30"W 111°3'0"W 111°2'30"W 111°2'0"W 111°1'30"W 111°1'0"W 111°0'30"W 111°0'0"W 110°59'30"W

40°43'30"N
40°43'0"N
40°42'30"N
40°42'0"N
40°41'30"N
40°41'0"N

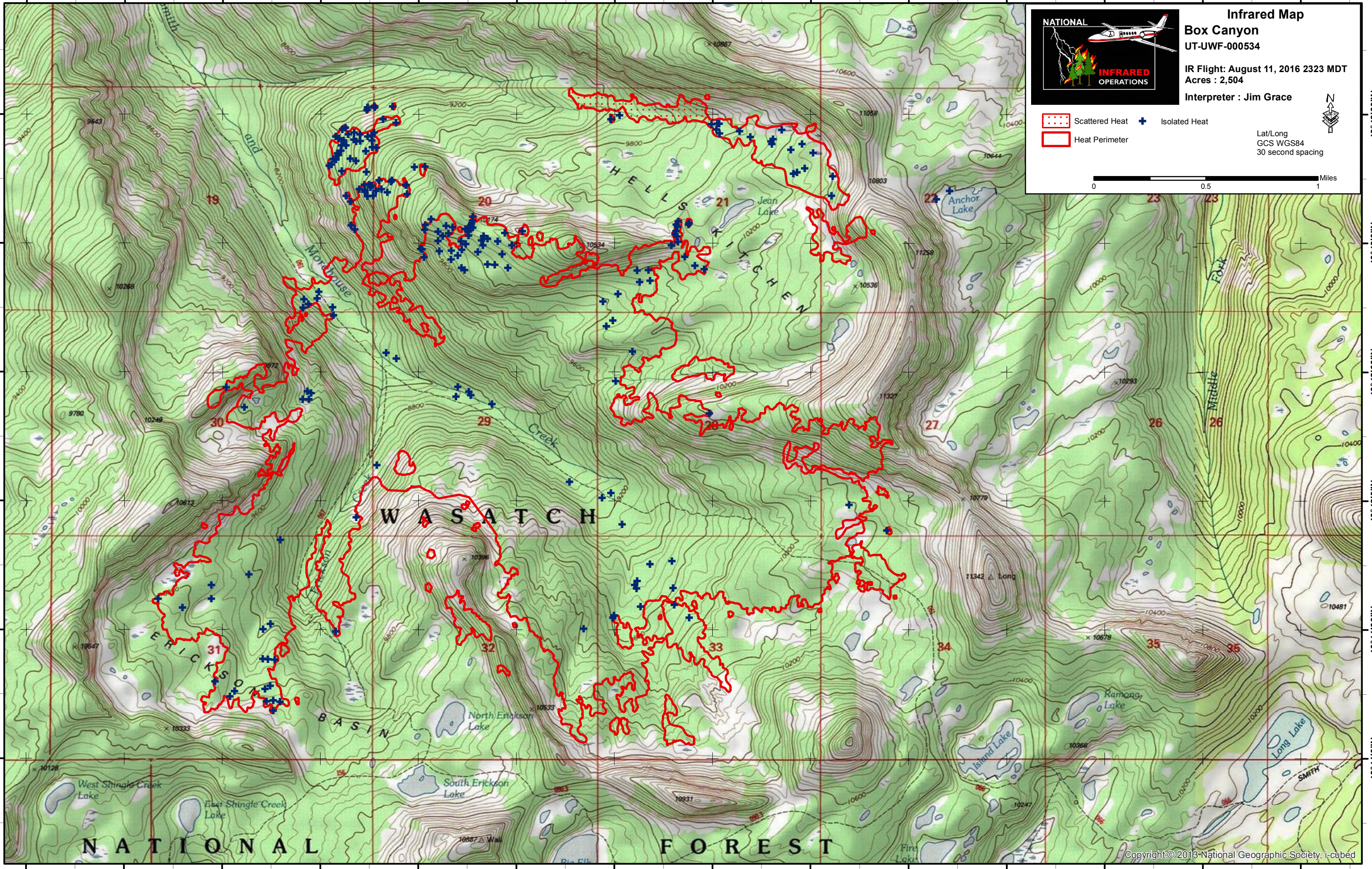
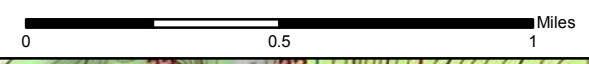
40°43'30"N
40°43'0"N
40°42'30"N
40°42'0"N
40°41'30"N
40°41'0"N



Infrared Map
Box Canyon
UT-UWF-000534
IR Flight: August 11, 2016 2323 MDT
Acres : 2,504
Interpreter : Jim Grace

-  Scattered Heat
-  Isolated Heat
-  Heat Perimeter

Lat/Long
GCS WGS84
30 second spacing



NATIONAL FOREST

111°6'0"W 111°5'30"W 111°5'0"W 111°4'30"W 111°4'0"W 111°3'30"W 111°3'0"W 111°2'30"W 111°2'0"W 111°1'30"W 111°1'0"W 111°0'30"W 111°0'0"W 110°59'30"W