




111°6'0"W 111°5'30"W 111°5'0"W 111°4'30"W 111°4'0"W 111°3'30"W 111°3'0"W 111°2'30"W 111°2'0"W 111°1'30"W 111°1'0"W 111°0'30"W 111°0'0"W 110°59'30"W

40°43'30"N  
40°43'0"N  
40°42'30"N  
40°42'0"N  
40°41'30"N  
40°41'0"N

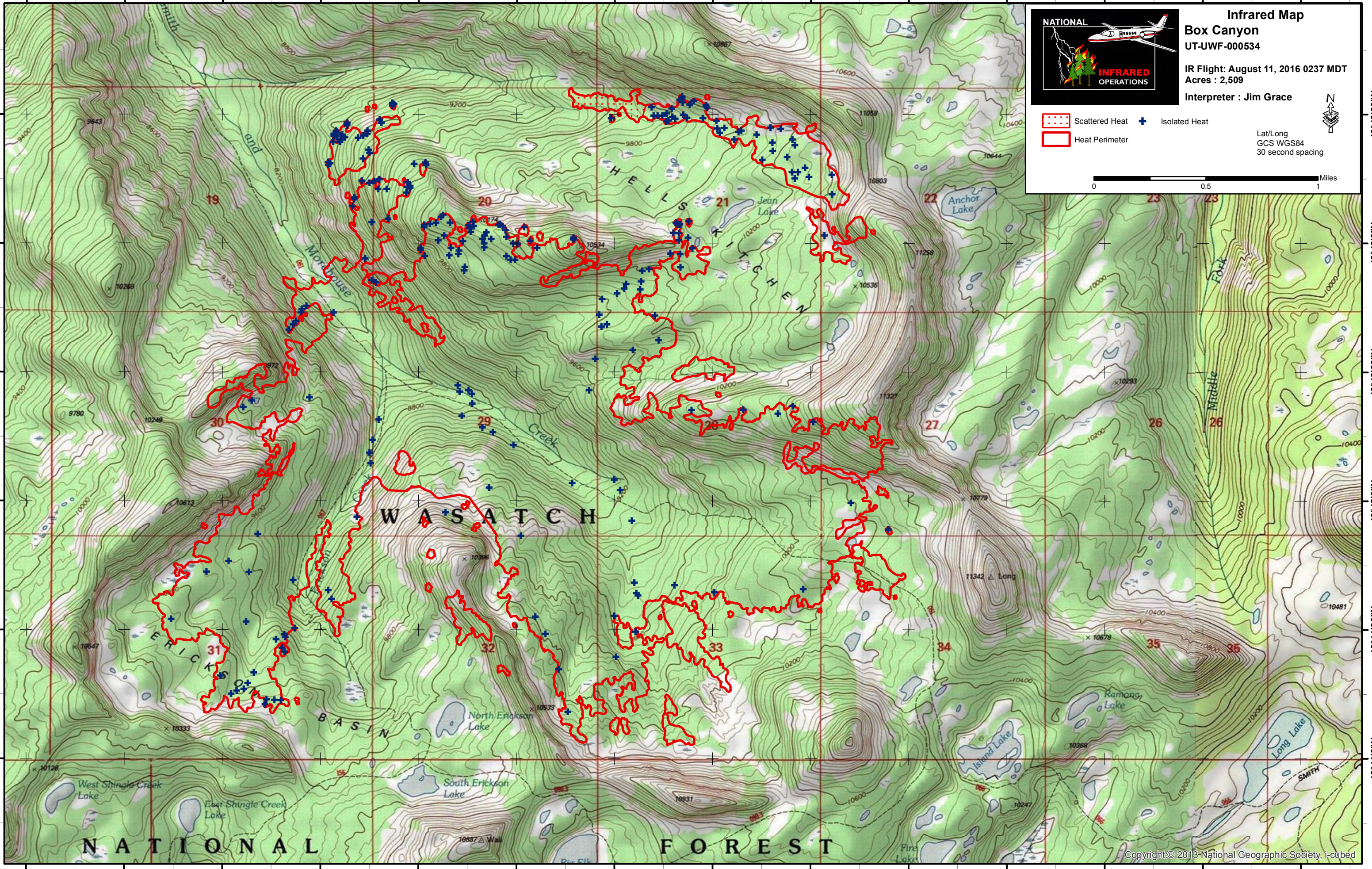
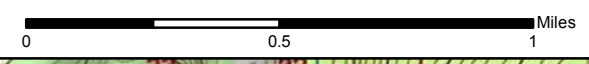
40°43'30"N  
40°43'0"N  
40°42'30"N  
40°42'0"N  
40°41'30"N  
40°41'0"N



**Infrared Map**  
**Box Canyon**  
UT-UWF-000534  
IR Flight: August 11, 2016 0237 MDT  
Acres : 2,509  
Interpreter : Jim Grace

-  Scattered Heat
-  Isolated Heat
-  Heat Perimeter

Lat/Long  
GCS WGS84  
30 second spacing



NATIONAL FOREST

111°6'0"W 111°5'30"W 111°5'0"W 111°4'30"W 111°4'0"W 111°3'30"W 111°3'0"W 111°2'30"W 111°2'0"W 111°1'30"W 111°1'0"W 111°0'30"W 111°0'0"W 110°59'30"W