

115°31'30"W

30'

115°28'30"W

115°27'0"W

Buck Fire IR Flight 07/05/2016 0101 hrs.

● Isolated Heat Source

□ Heat Perimeter

▨ Intense Heat

▤ Scattered Heat

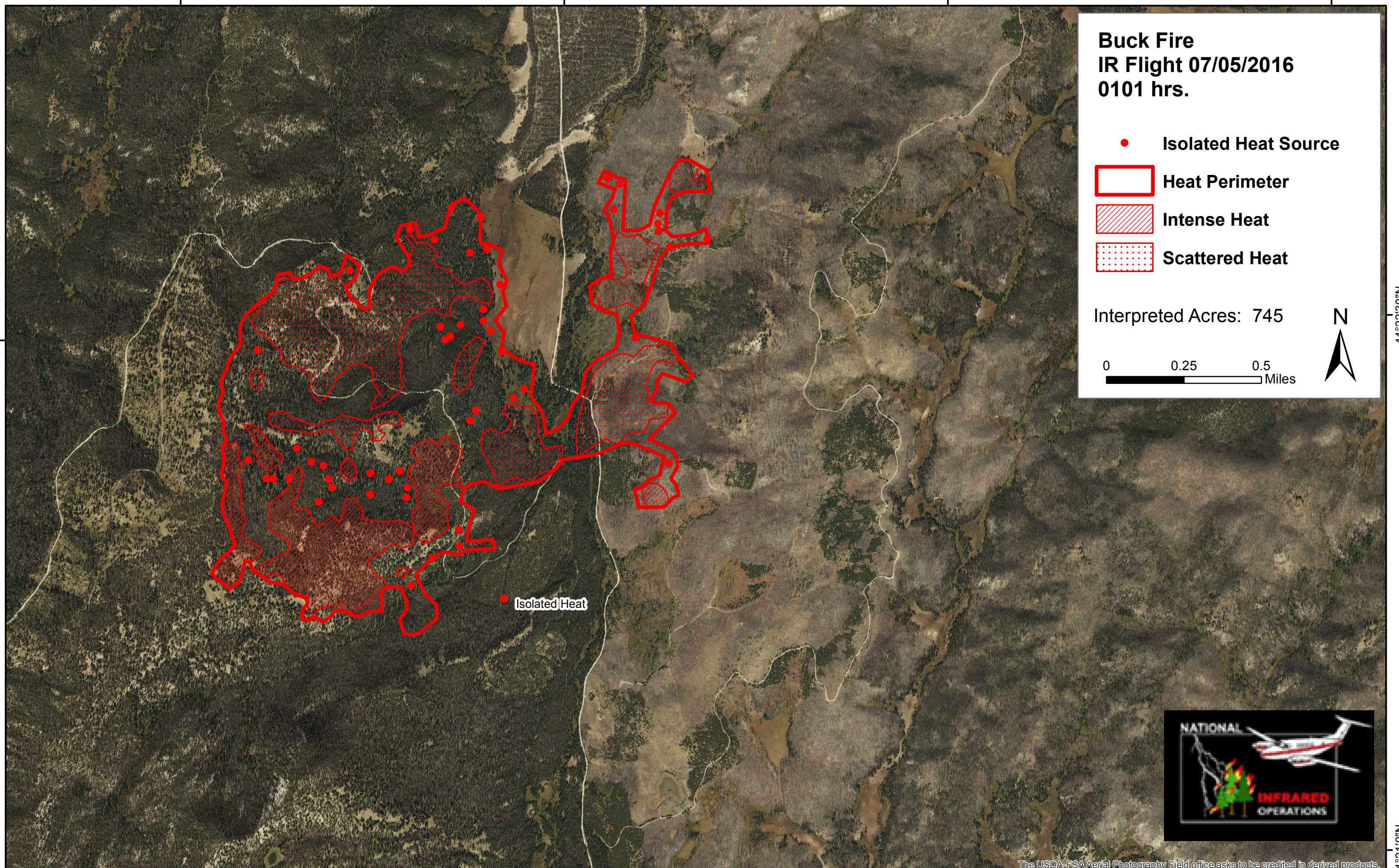
Interpreted Acres: 745

0 0.25 0.5 Miles



44°22'30"N

44°22'30"N



Isolated Heat



The USDA-FSA Aerial Photography Field office asks to be credited in derived products.

115°31'30"W

30'

115°28'30"W

115°27'0"W

44°21'0"N