

115°31'30"W

30'

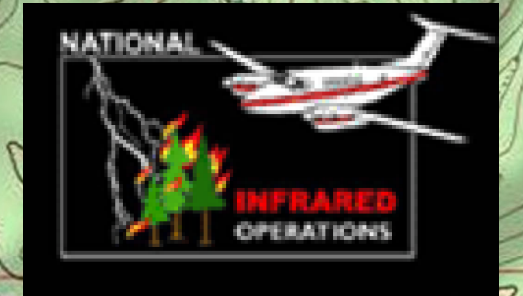
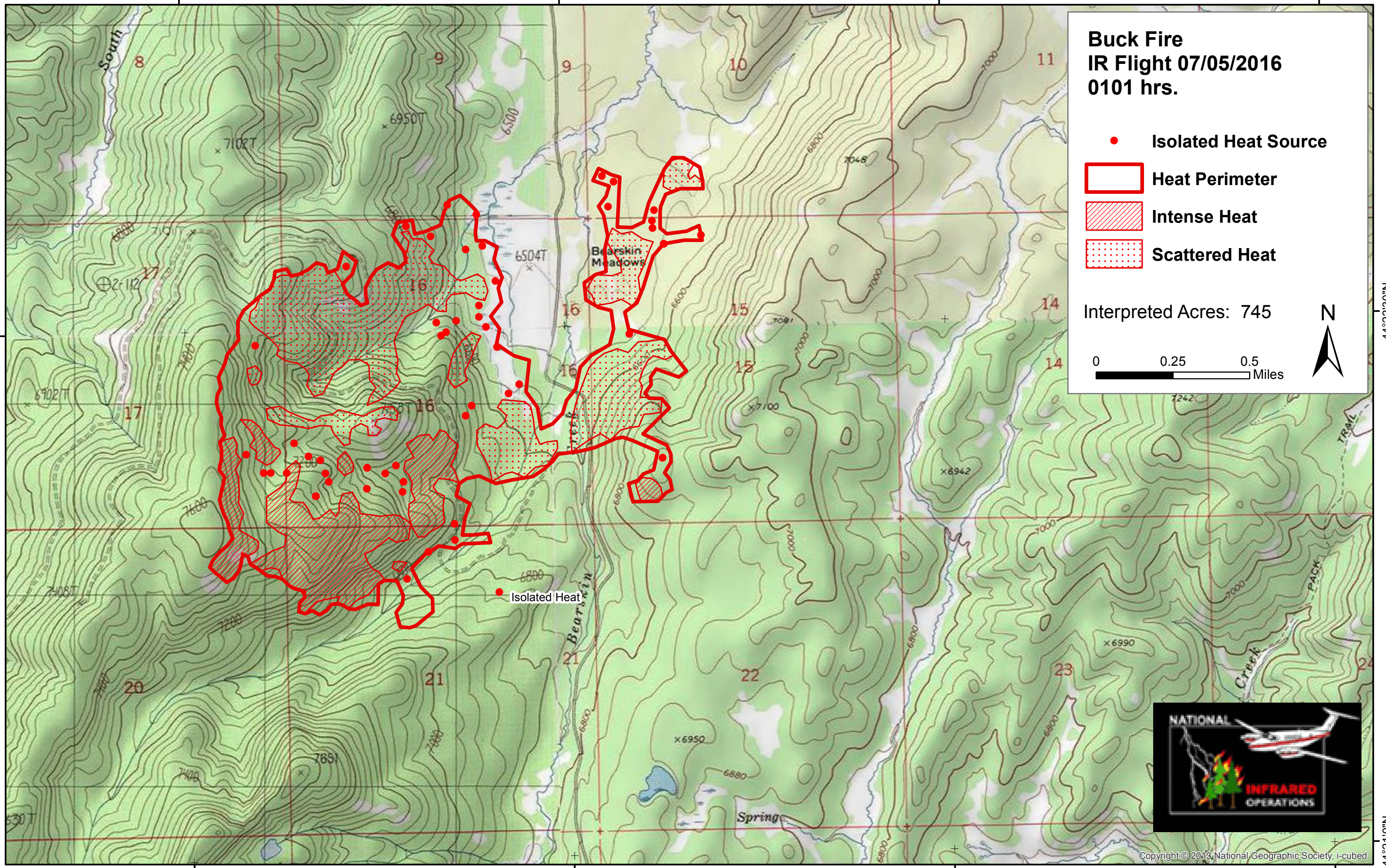
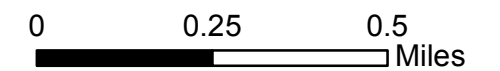
115°28'30"W

115°27'0"W

Buck Fire
IR Flight 07/05/2016
0101 hrs.

- Isolated Heat Source
- Heat Perimeter
- Intense Heat
- Scattered Heat

Interpreted Acres: 745



115°31'30"W

30'

115°28'30"W

115°27'0"W

44°22'30"N

44°22'30"N

44°21'0"N