

115°31'30"W

30'

115°28'30"W

44°22'30"N

44°22'30"N

**Buck Fire
IR Flight 07/13/2016
2255 hrs.**


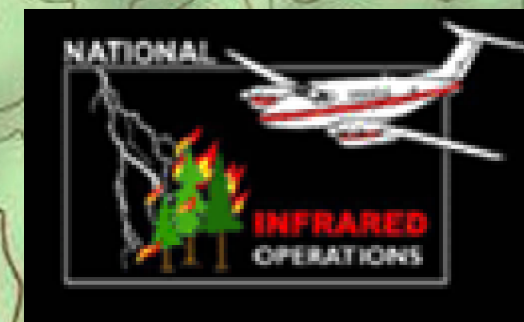
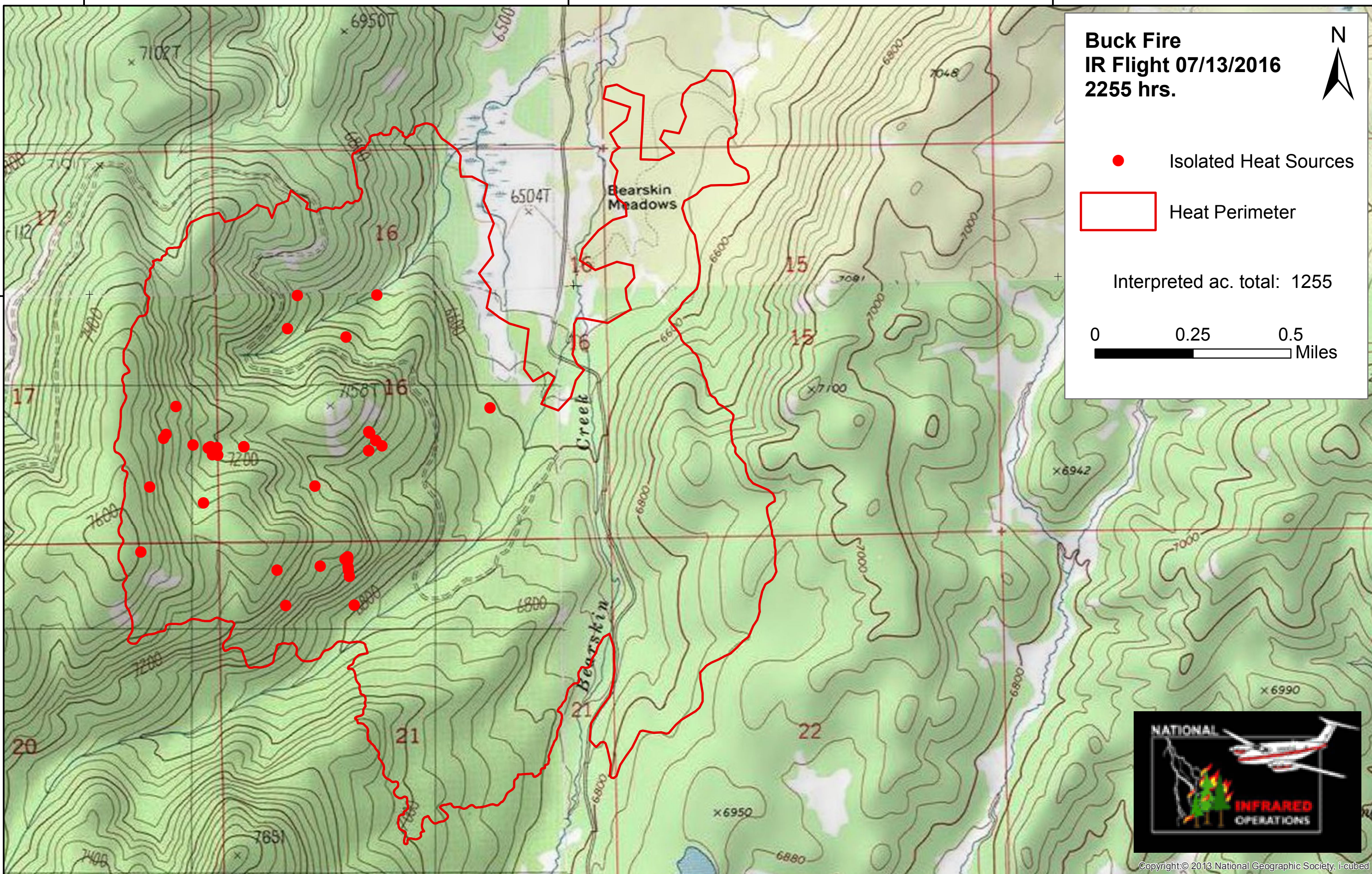


 Isolated Heat Sources

 Heat Perimeter

Interpreted ac. total: 1255

0 0.25 0.5
Miles

115°31'30"W

30'

115°28'30"W