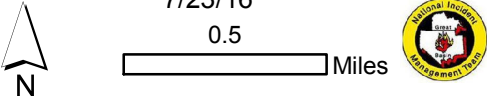
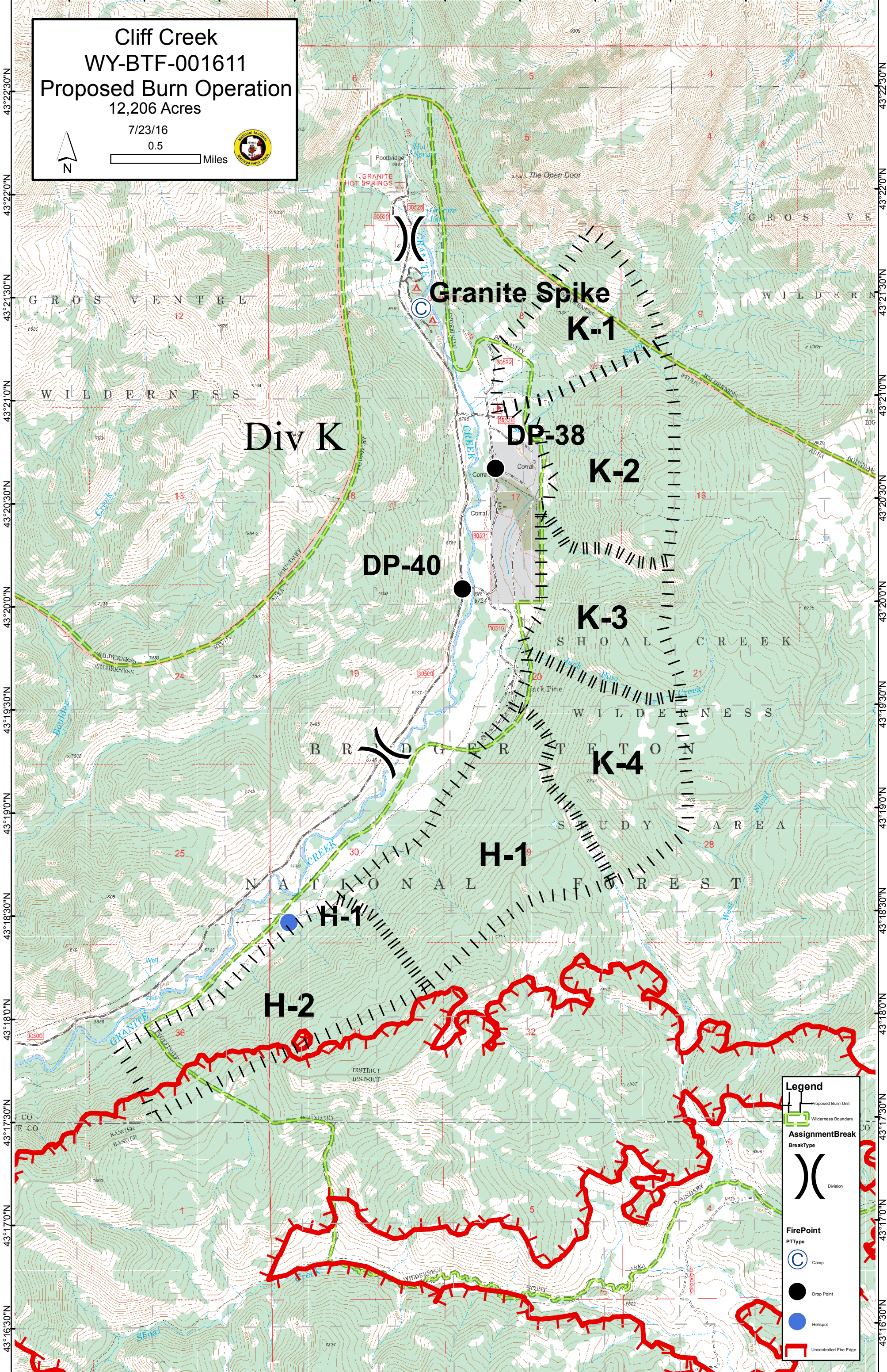


110°29'0"W 110°28'30"W 110°28'0"W 110°27'30"W 110°27'0"W 110°26'30"W 110°26'0"W 110°25'30"W 110°25'0"W 110°24'30"W 110°24'0"W

Cliff Creek
WY-BTF-001611
Proposed Burn Operation
 12,206 Acres

7/23/16
 0.5 Miles

Legend

- Proposed Burn Unit
- Wilderness Boundary

AssignmentBreak

BreakType

- Division

FirePoint

PTType

- Camp
- Drop Point
- Helipoint
- Uncontrolled Fire Edge

110°29'0"W 110°28'30"W 110°28'0"W 110°27'30"W 110°27'0"W 110°26'30"W 110°26'0"W 110°25'30"W 110°25'0"W 110°24'30"W 110°24'0"W