

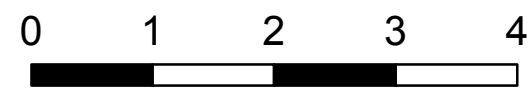


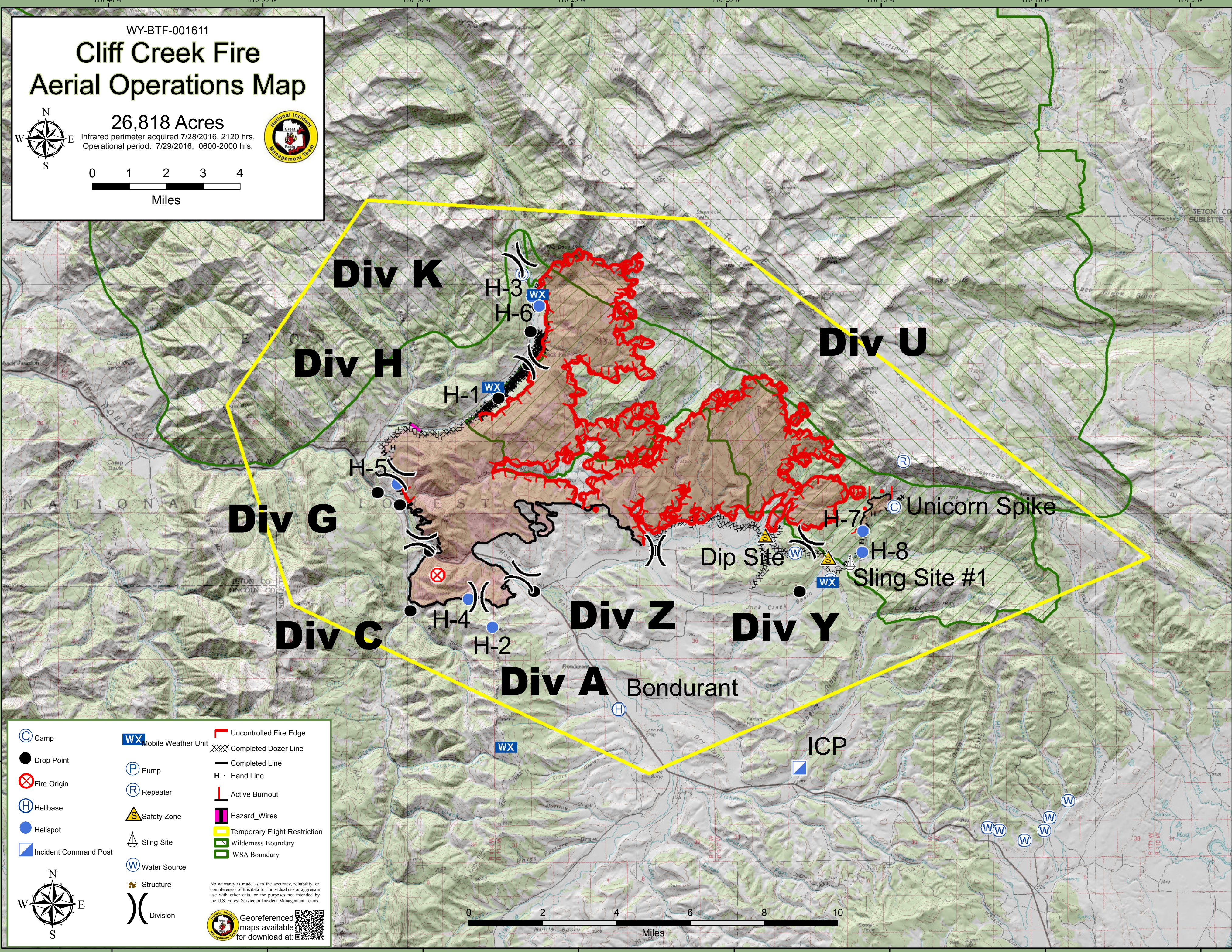
WY-BTF-001611

Cliff Creek Fire Aerial Operations Map

26,818 Acres
Infrared perimeter acquired 7/28/2016, 2120 hrs.
Operational period: 7/29/2016, 0600-2000 hrs.






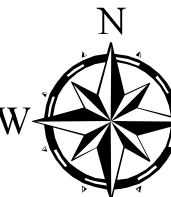

Miles



Camp	Mobile Weather Unit	Uncontrolled Fire Edge
Drop Point	Pump	Completed Dozer Line
Fire Origin	Repeater	Completed Line
Helibase	Safety Zone	Active Burnout
Helispot	Sling Site	Hazard_Wires
Incident Command Post	Water Source	Temporary Flight Restriction
Structure	Division	Wilderness Boundary
		WSA Boundary

No warranty is made as to the accuracy, reliability, or completeness of this data for individual use or aggregate use with other data, or for purposes not intended by the U.S. Forest Service or Incident Management Teams.

Georeferenced maps available for download at: 

Miles