

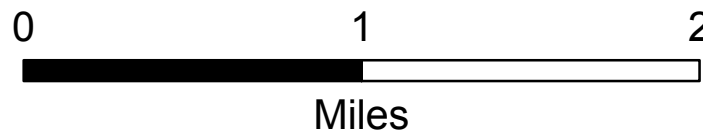
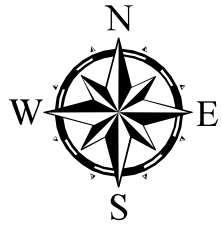
110°33'W 110°32'W 110°31'W 110°30'W 110°29'W 110°28'W 110°27'W 110°26'W 110°25'W 110°24'W 110°23'W

WY-BTF-001611

Cliff Creek Fire East side

26,818 Acres

Infrared perimeter acquired 7/29/2016, 2120 hrs.
Operational period: 7/29/2016, 0600-2000 hrs.



Div K

Div H

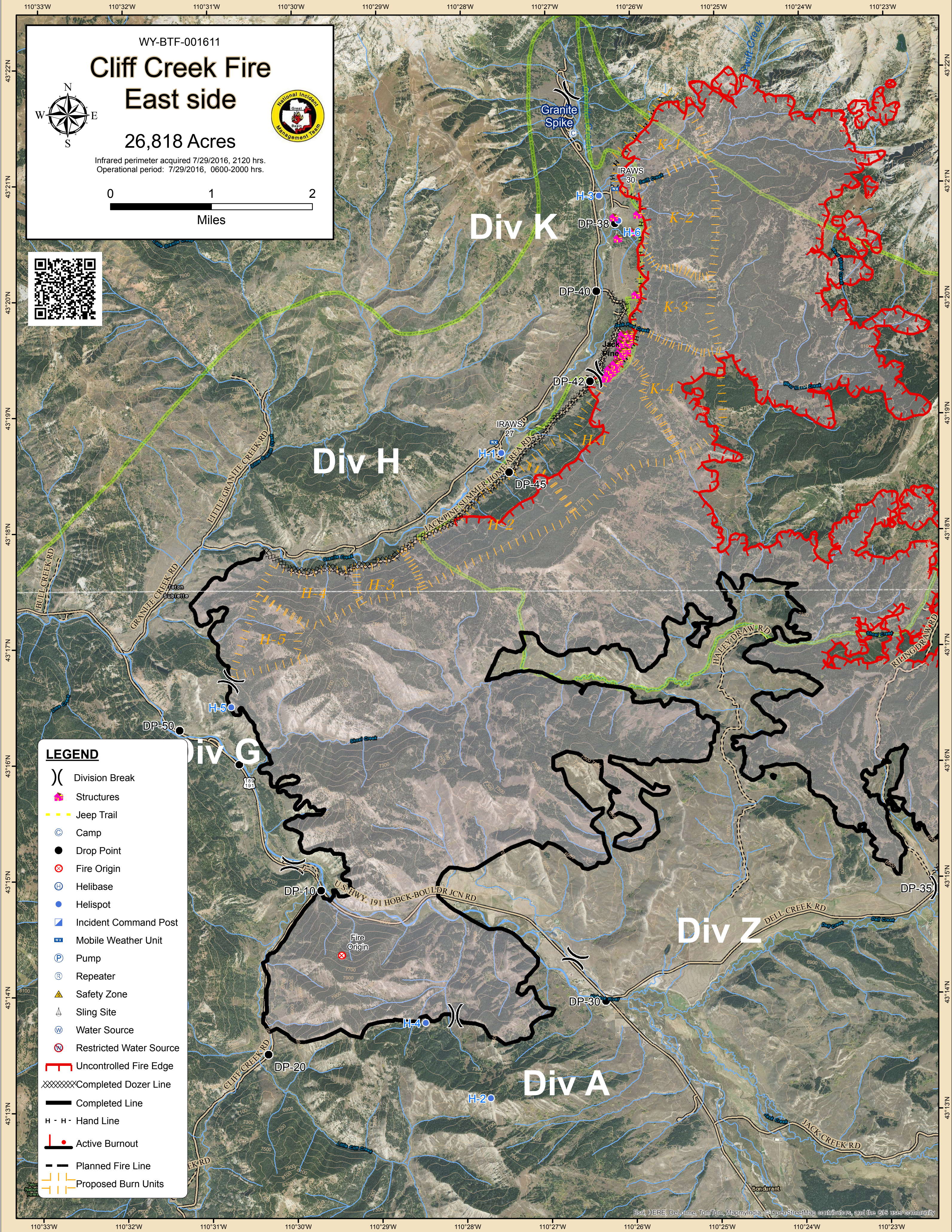
Div G

Div Z

Div A

LEGEND

- Division Break
- Structures
- Jeep Trail
- Camp
- Drop Point
- Fire Origin
- Helibase
- Helispot
- Incident Command Post
- Mobile Weather Unit
- Pump
- Repeater
- Safety Zone
- Sling Site
- Water Source
- Restricted Water Source
- Uncontrolled Fire Edge
- Completed Dozer Line
- Completed Line
- Hand Line
- Active Burnout
- Planned Fire Line
- Proposed Burn Units



43°22'N 43°21'N 43°20'N 43°19'N 43°18'N 43°17'N 43°16'N 43°15'N 43°14'N 43°13'N

43°22'N 43°21'N 43°20'N 43°19'N 43°18'N 43°17'N 43°16'N 43°15'N 43°14'N 43°13'N