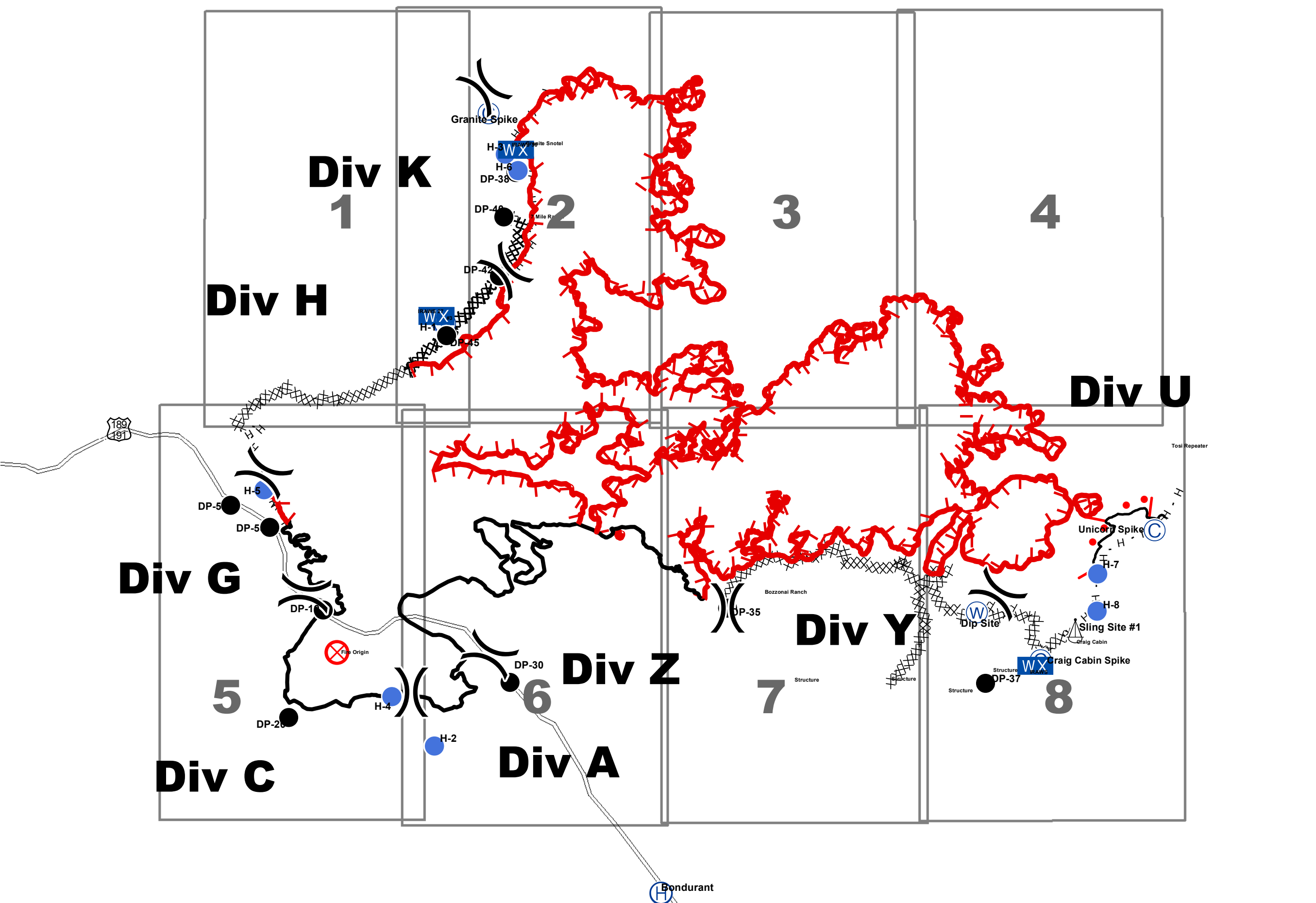
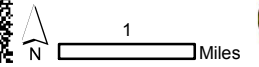


Cliff Creek  
WY-BTF-001611  
IAP Map Index

26,818 Acres

Infrared perimeter acquired 7/28/2016, 2120 hrs.  
Operational period: 7/29/2016, 0600-2000 hrs.



**LEGEND**

- ( ) Division
- ⊙ Camp
- Drop Point
- ⊗ Fire Origin
- ⊕ Helibase
- Helispot
- ▣ Incident Command Post
- WX Mobile Weather Unit
- ⊙ Pump
- ⊙ Sling Site
- ⊙ Water Source
- 🏠 Structure
- ┌ Uncontrolled Fire Edge
- XXXX Completed Dozer Line
- Completed Line
- H - H Hand Line
- ┌ Active Burnout
- Planned Fire Line