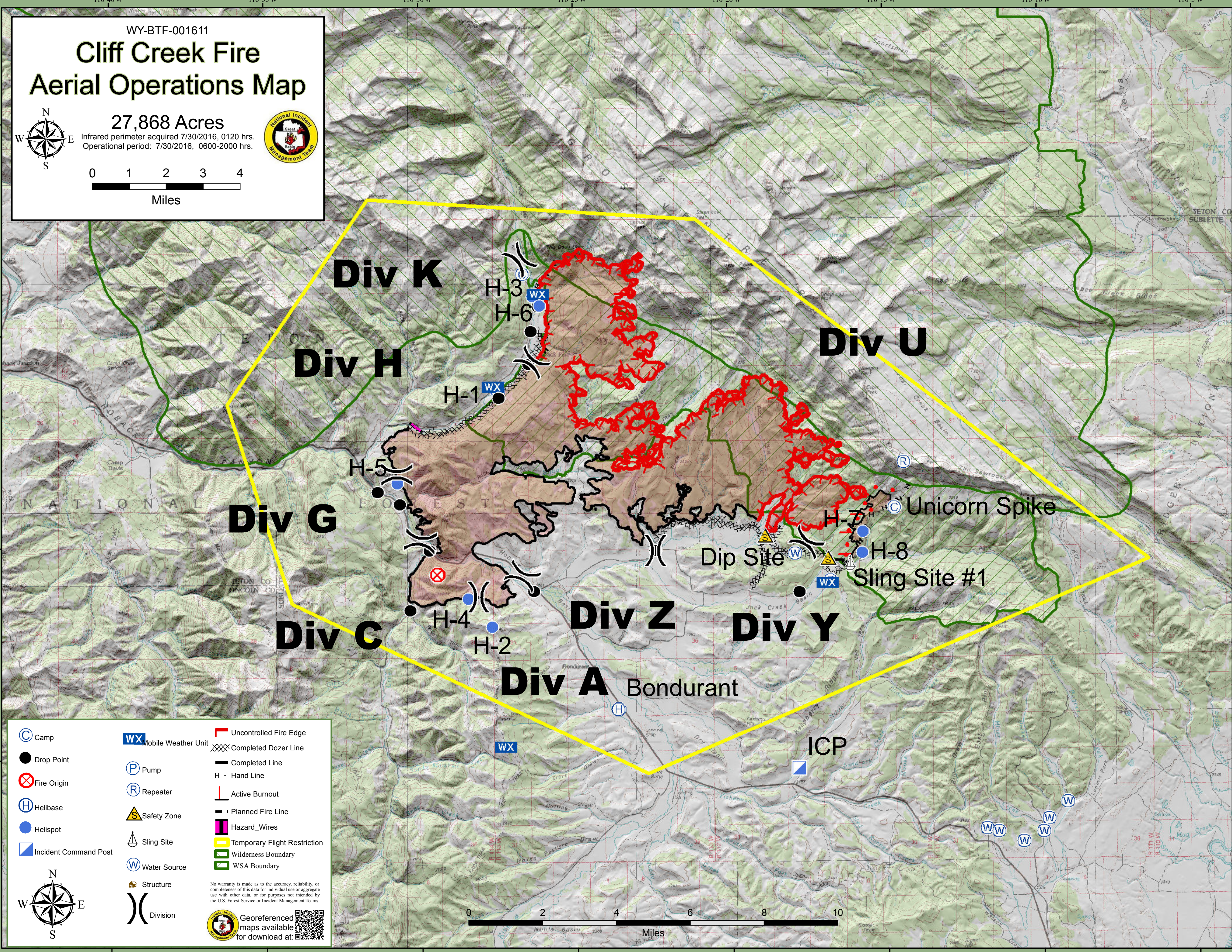
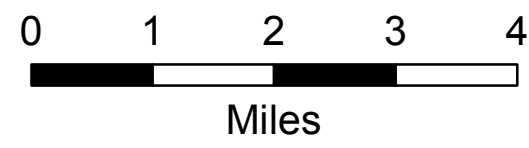
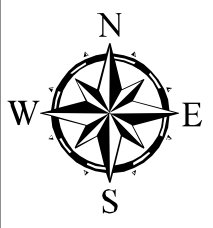


WY-BTF-001611
Cliff Creek Fire
Aerial Operations Map

27,868 Acres

Infrared perimeter acquired 7/30/2016, 0120 hrs.
 Operational period: 7/30/2016, 0600-2000 hrs.



Camp	Mobile Weather Unit	Uncontrolled Fire Edge
Drop Point	Pump	Completed Dozer Line
Fire Origin	Repeater	Completed Line
Helibase	Safety Zone	Hand Line
Helispot	Sling Site	Active Burnout
Incident Command Post	Water Source	Planned Fire Line
	Structure	Hazard_Wires
	Division	Temporary Flight Restriction
		Wilderness Boundary
		WSA Boundary

No warranty is made as to the accuracy, reliability, or completeness of this data for individual use or aggregate use with other data, or for purposes not intended by the U.S. Forest Service or Incident Management Teams.

Georeferenced maps available for download at:

