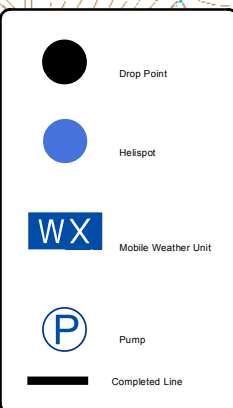
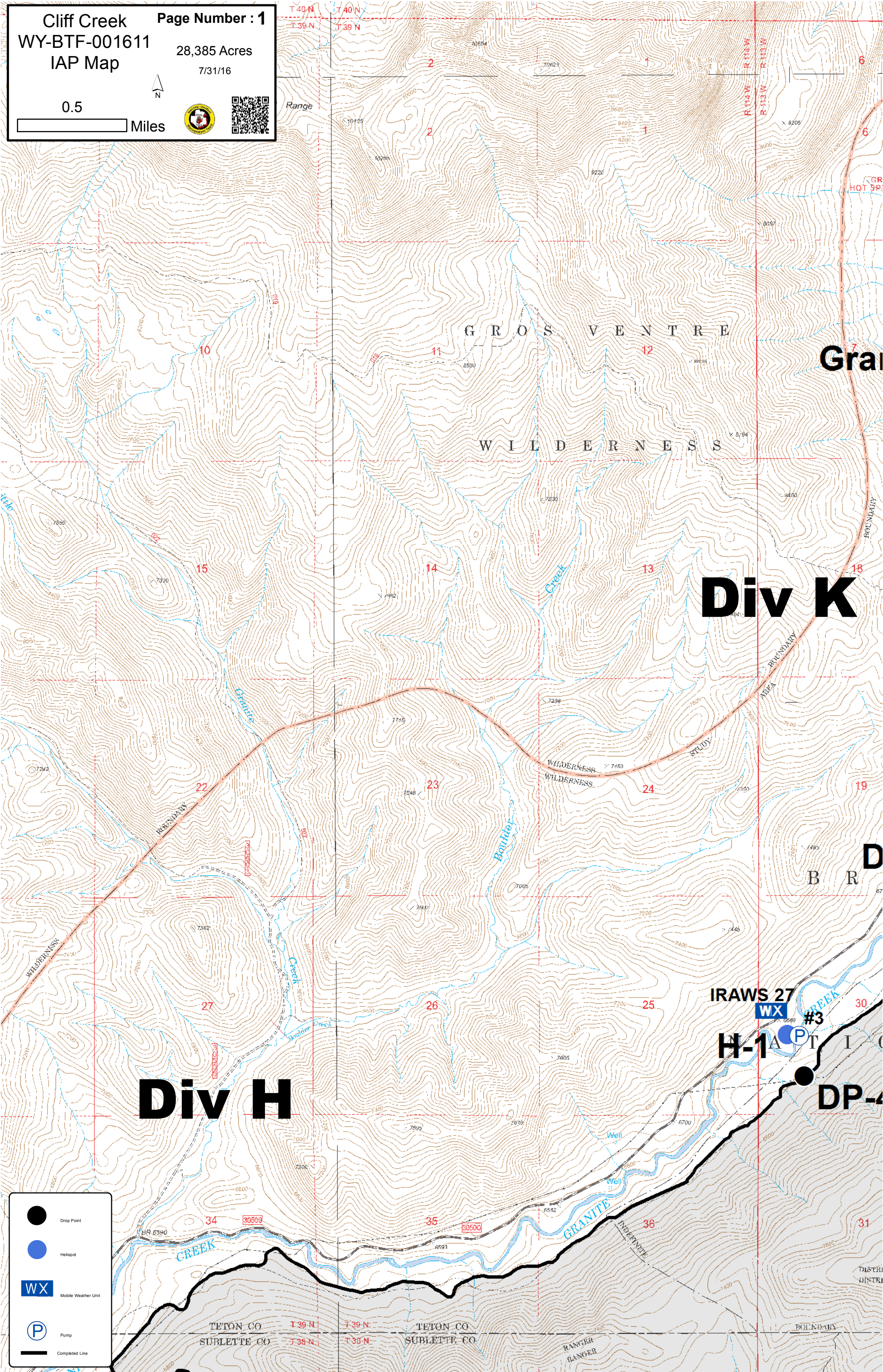



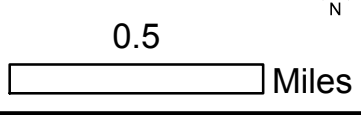


0.5 Miles



- Drop Point
- Helispot
- WX Mobile Weather Unit
- Ⓟ Pump
- Completed Line





# Div U

## Granite Spike

## Div K

H-3

IRAWS 30

Granite Snotel

H-6

DP-38

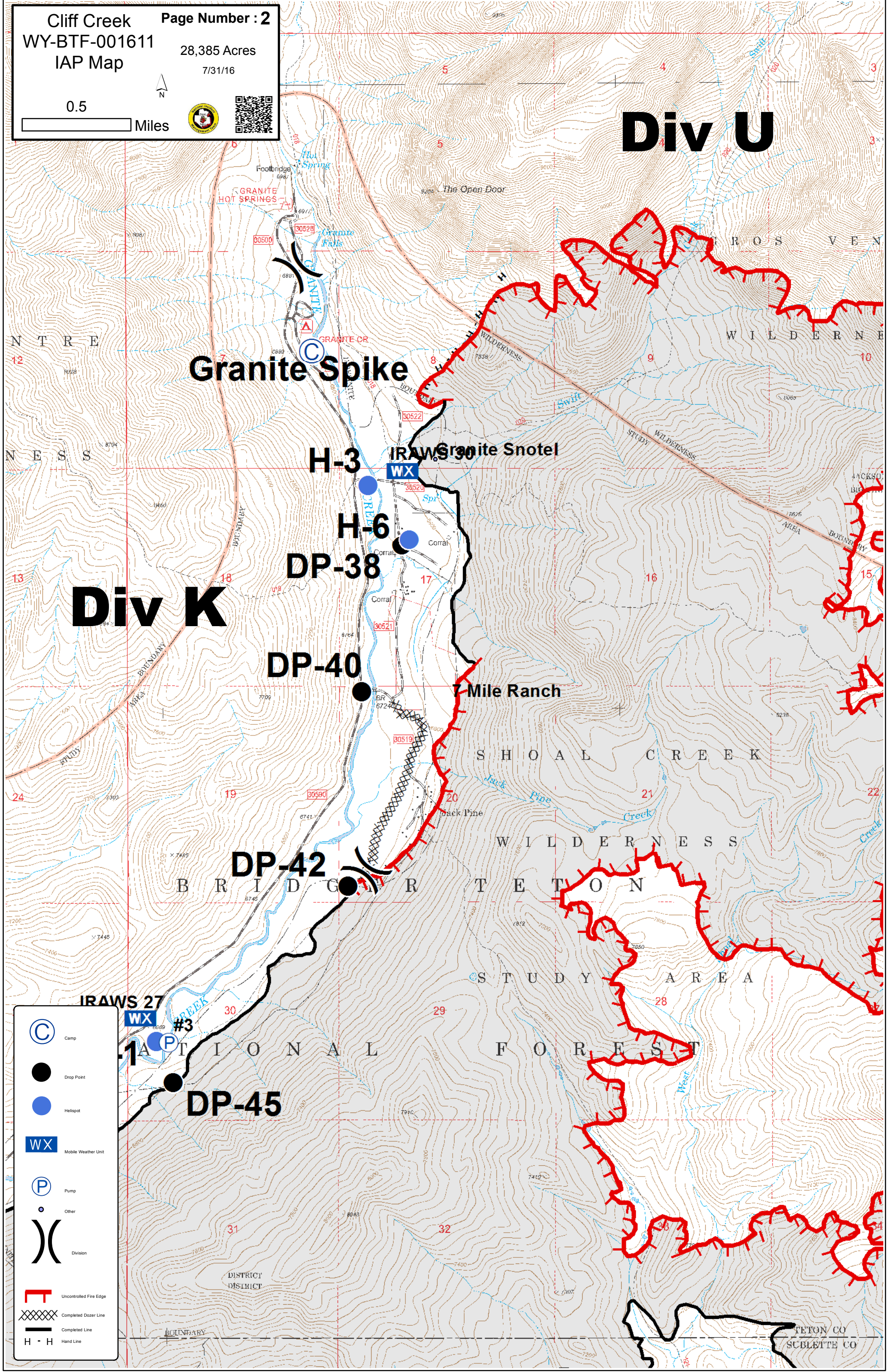
DP-40

Mile Ranch

DP-42

DP-45


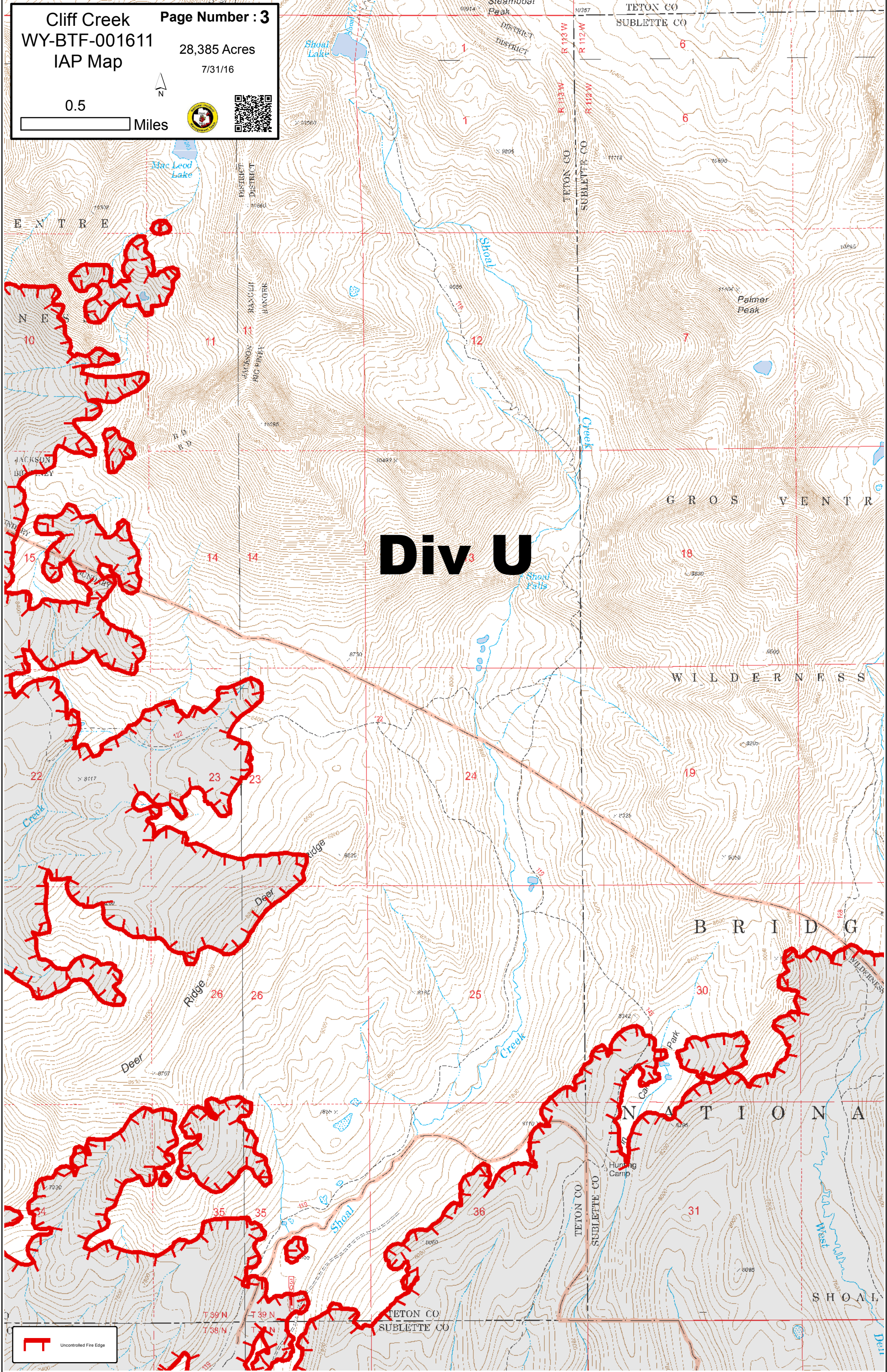
|  |                        |
|--|------------------------|
|  | Camp                   |
|  | Drop Point             |
|  | Helispot               |
|  | Mobile Weather Unit    |
|  | Pump                   |
|  | Other                  |
|  | Division               |
|  | Uncontrolled Fire Edge |
|  | Completed Dozer Line   |
|  | Completed Line         |
|  | Hand Line              |





**Cliff Creek**      **Page Number : 3**  
**WY-BTF-001611**      **28,385 Acres**  
**IAP Map**              **7/31/16**

0.5 Miles

**Div U**



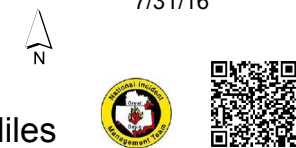
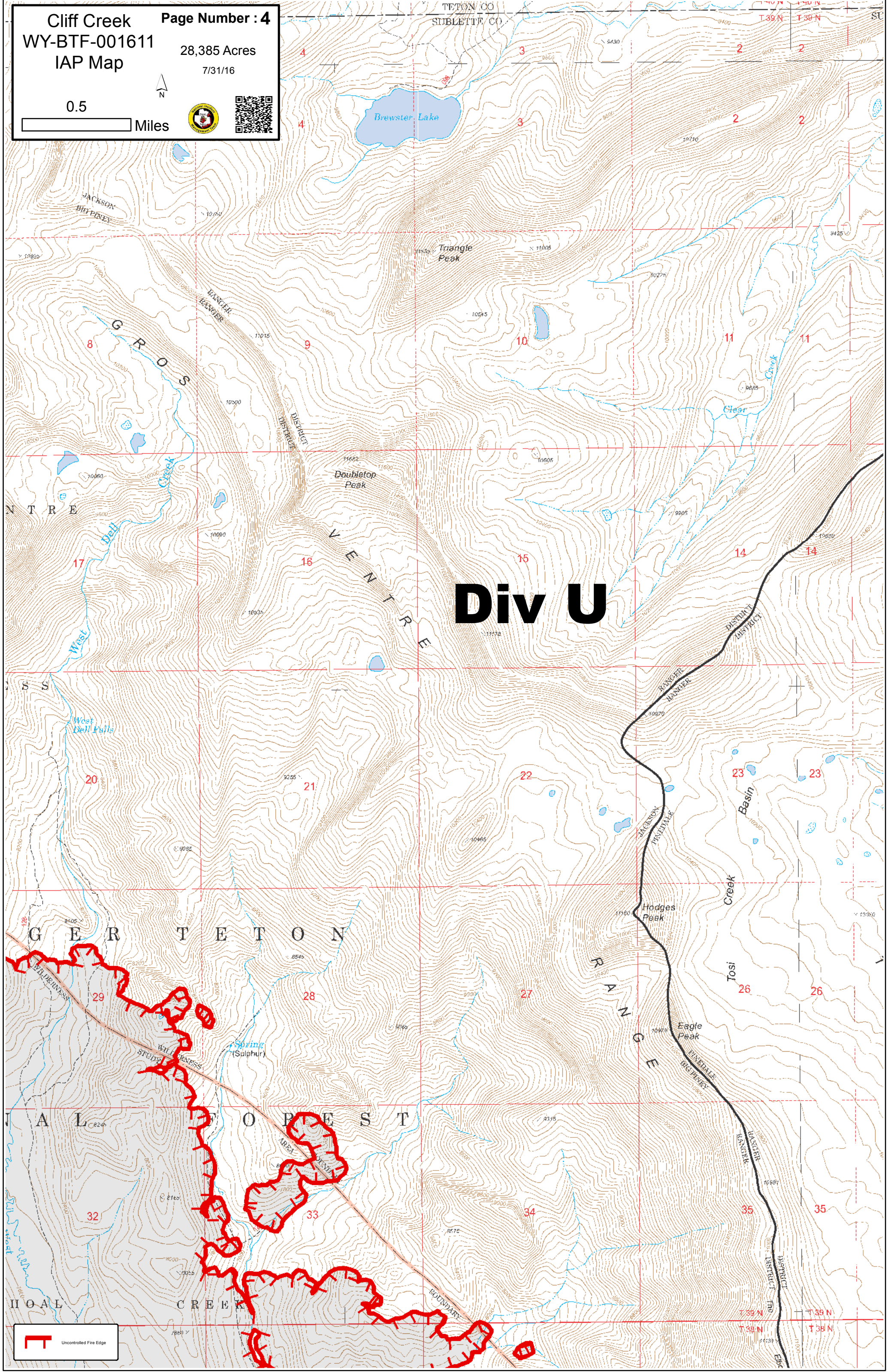
Uncontrolled Fire Edge



**Cliff Creek**  
**WY-BTF-001611**  
**IAP Map**

**Page Number : 4**  
 28,385 Acres  
 7/31/16

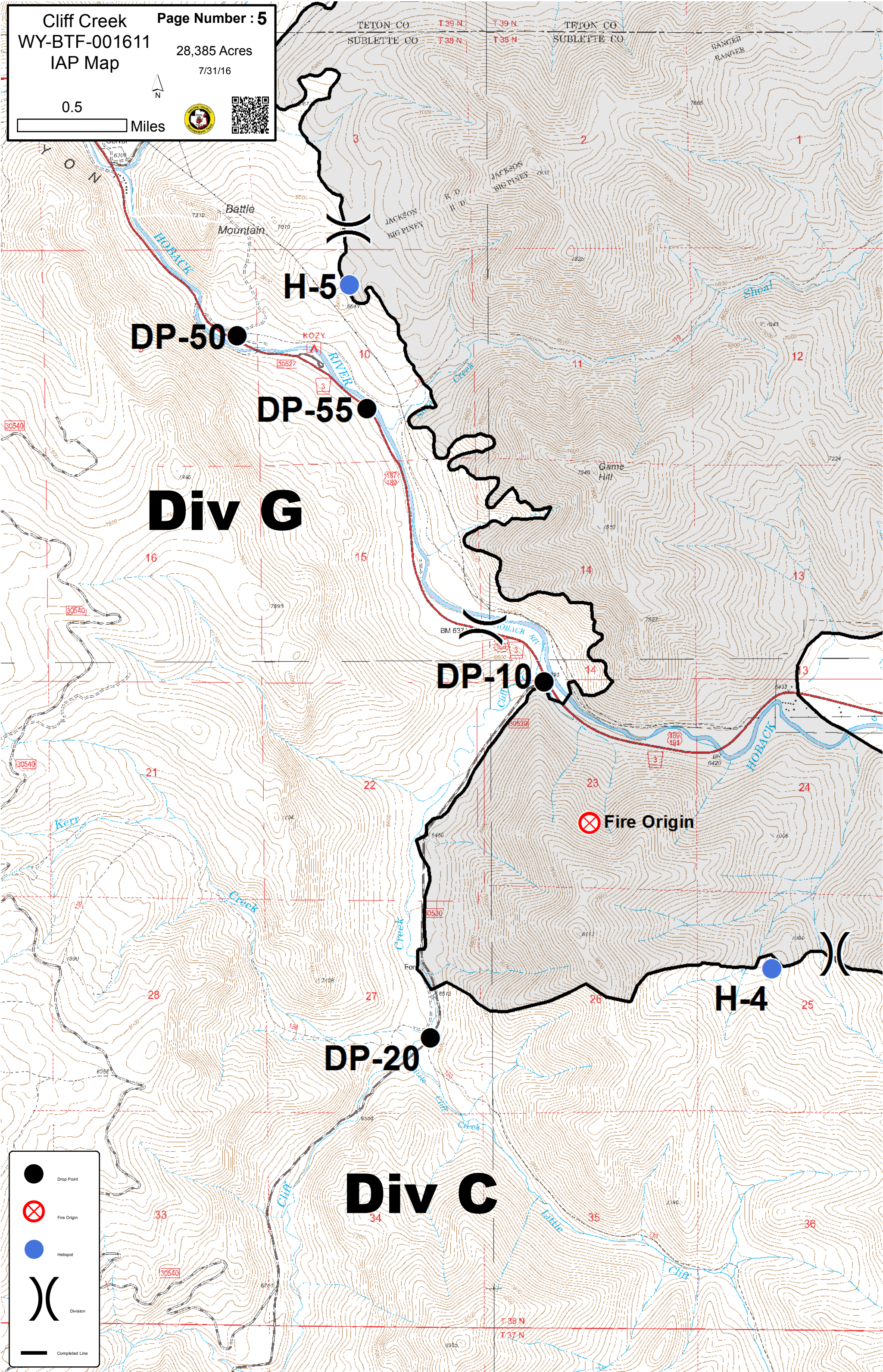
0.5 Miles



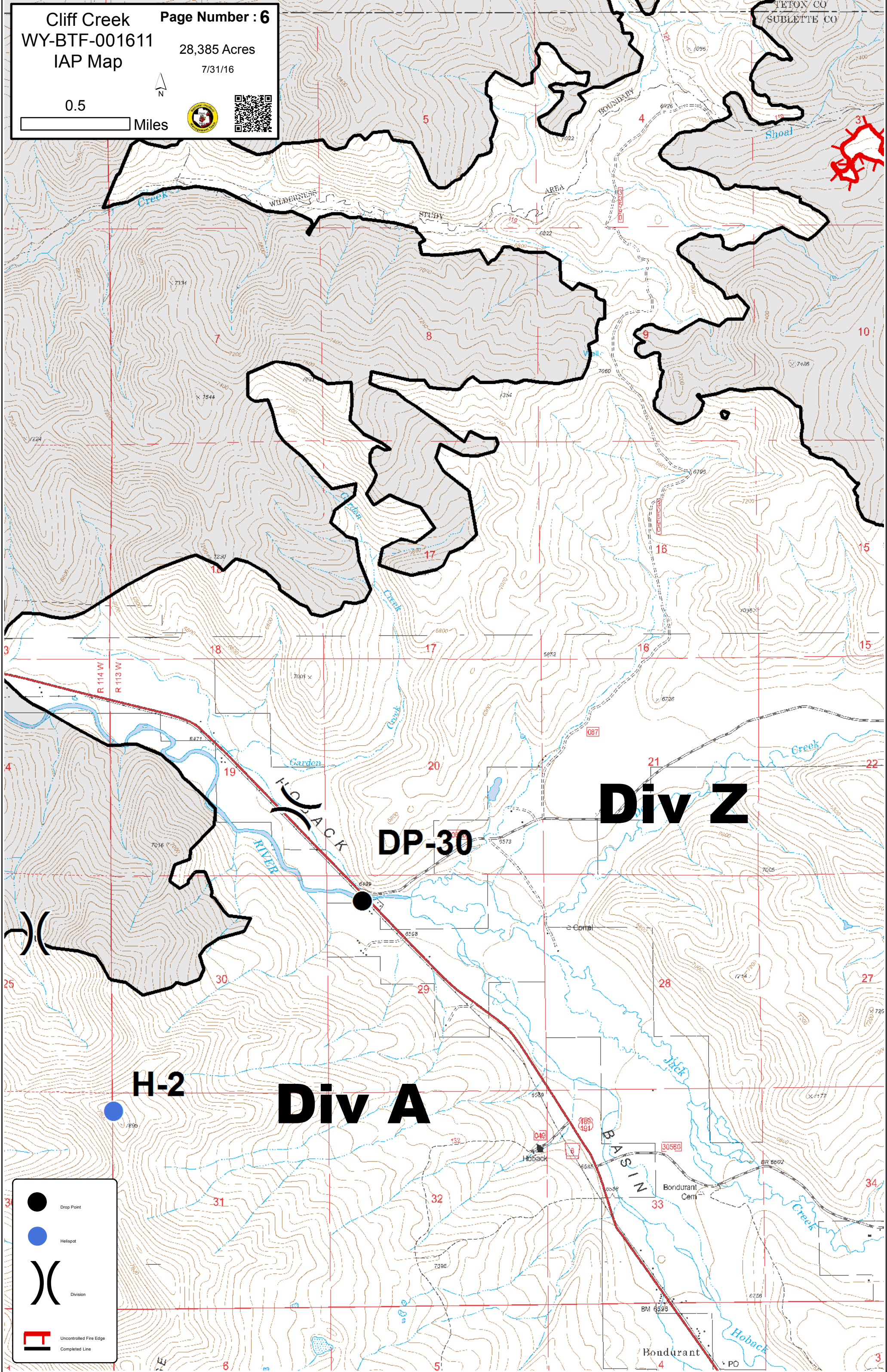
Cliff Creek Page Number : 5  
 WY-BTF-001611 28,385 Acres  
 IAP Map 7/31/16

0.5 Miles



- Drop Point
- Fire Origin
- Helispot
- Division
- Completed Line





**Div Z**

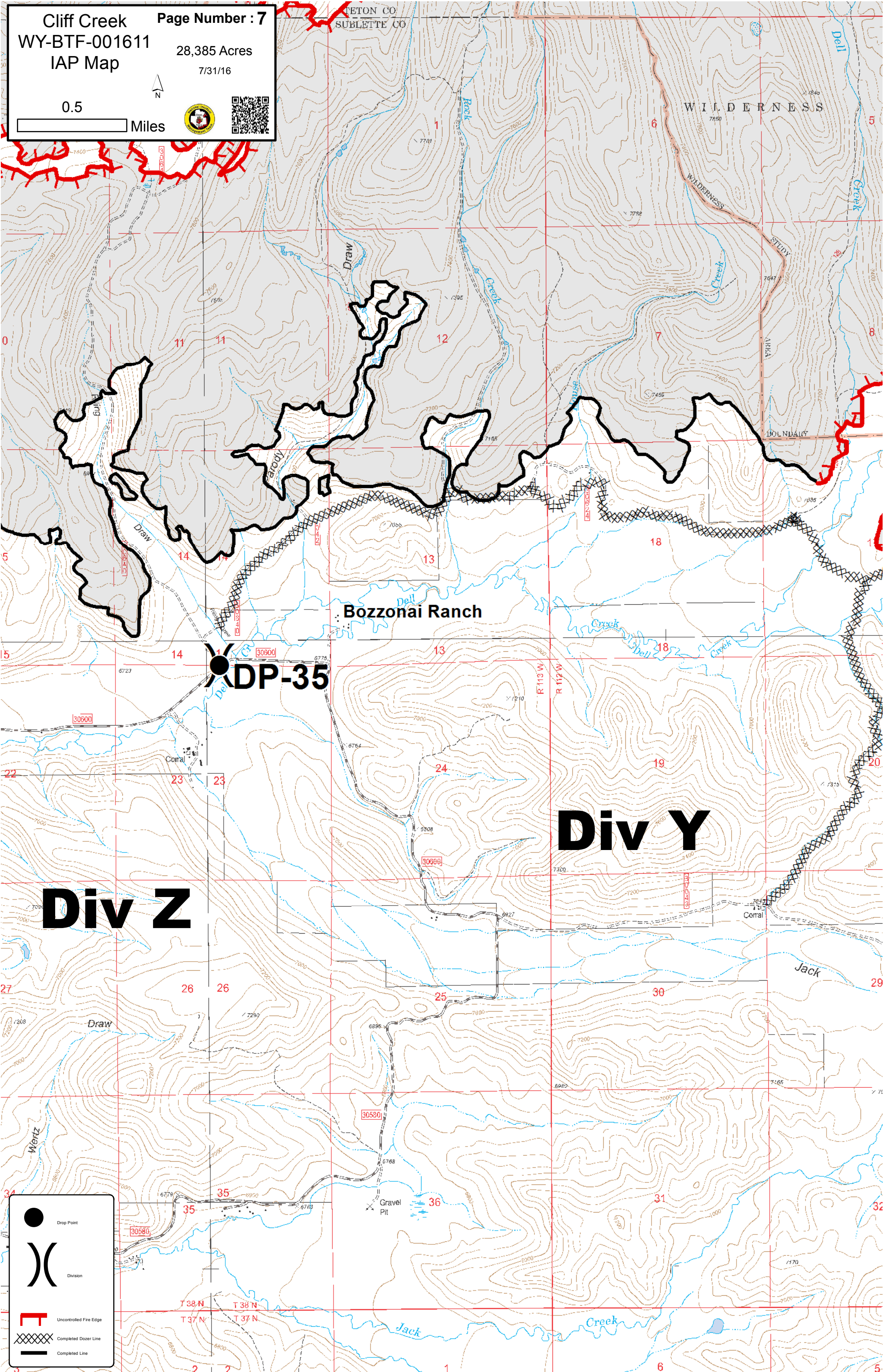
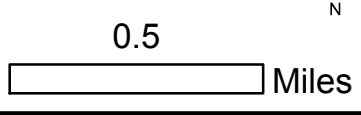
**DP-30**

**H-2**

**Div A**

- Drop Point
- Helispot
- ⌋ Division
- Uncontrolled Fire Edge
- Completed Line





Bozzonai Ranch

DP-35

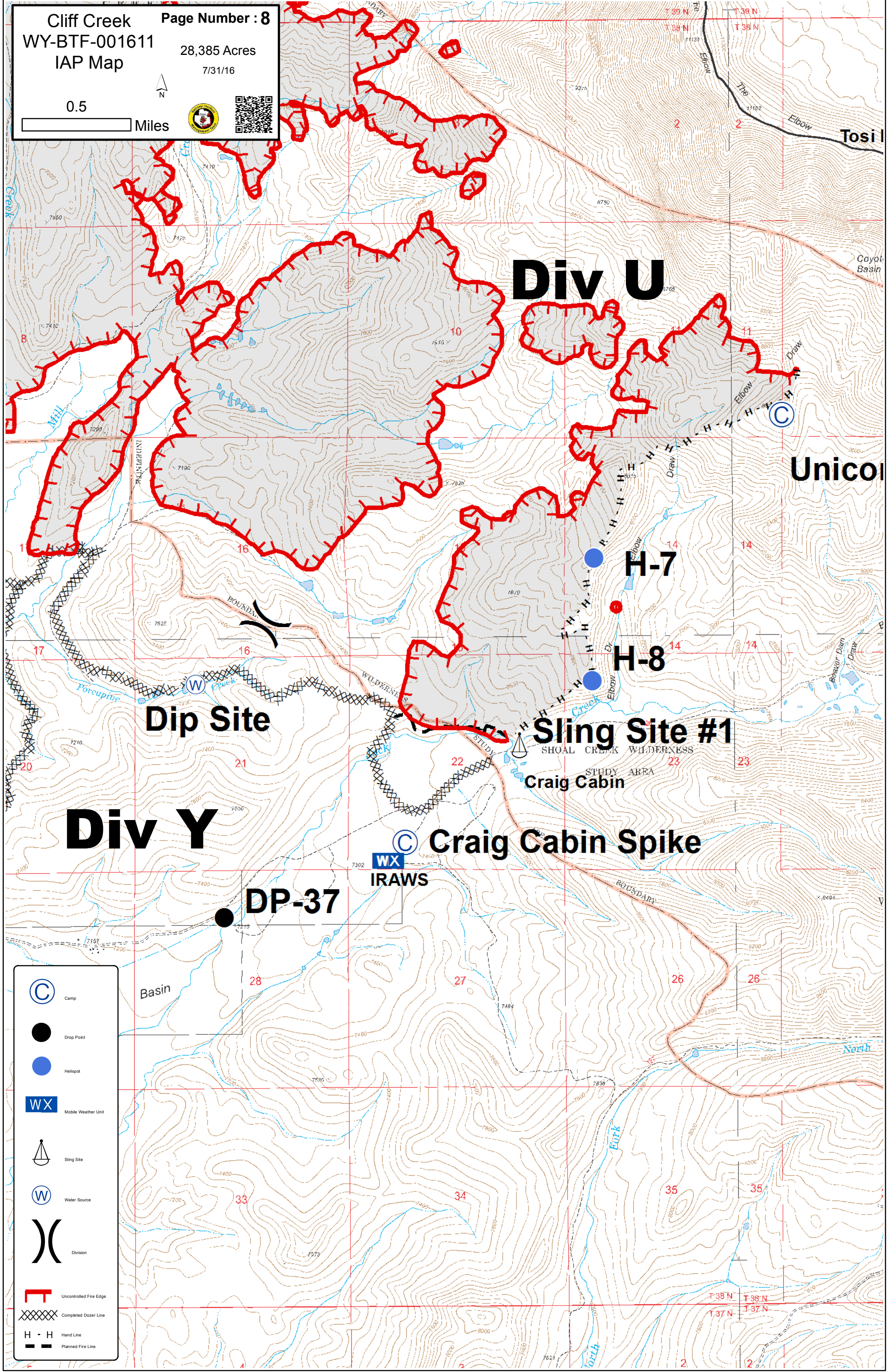
Div Y

Div Z

- Drop Point
- Division
- Uncontrolled Fire Edge
- Completed Dozer Line
- Completed Line



0.5 Miles



**Div U**

**Unicoi**

**Dip Site**

**Sling Site #1**

**Craig Cabin**

**Craig Cabin Spike**

**DP-37**

**WX**  
**IRAWS**

- Camp
- Drop Point
- Helispot
- Mobile Weather Unit
- Sling Site
- Water Source
- Division
- Uncontrolled Fire Edge
- Completed Dozer Line
- Hand Line
- Planned Fire Line