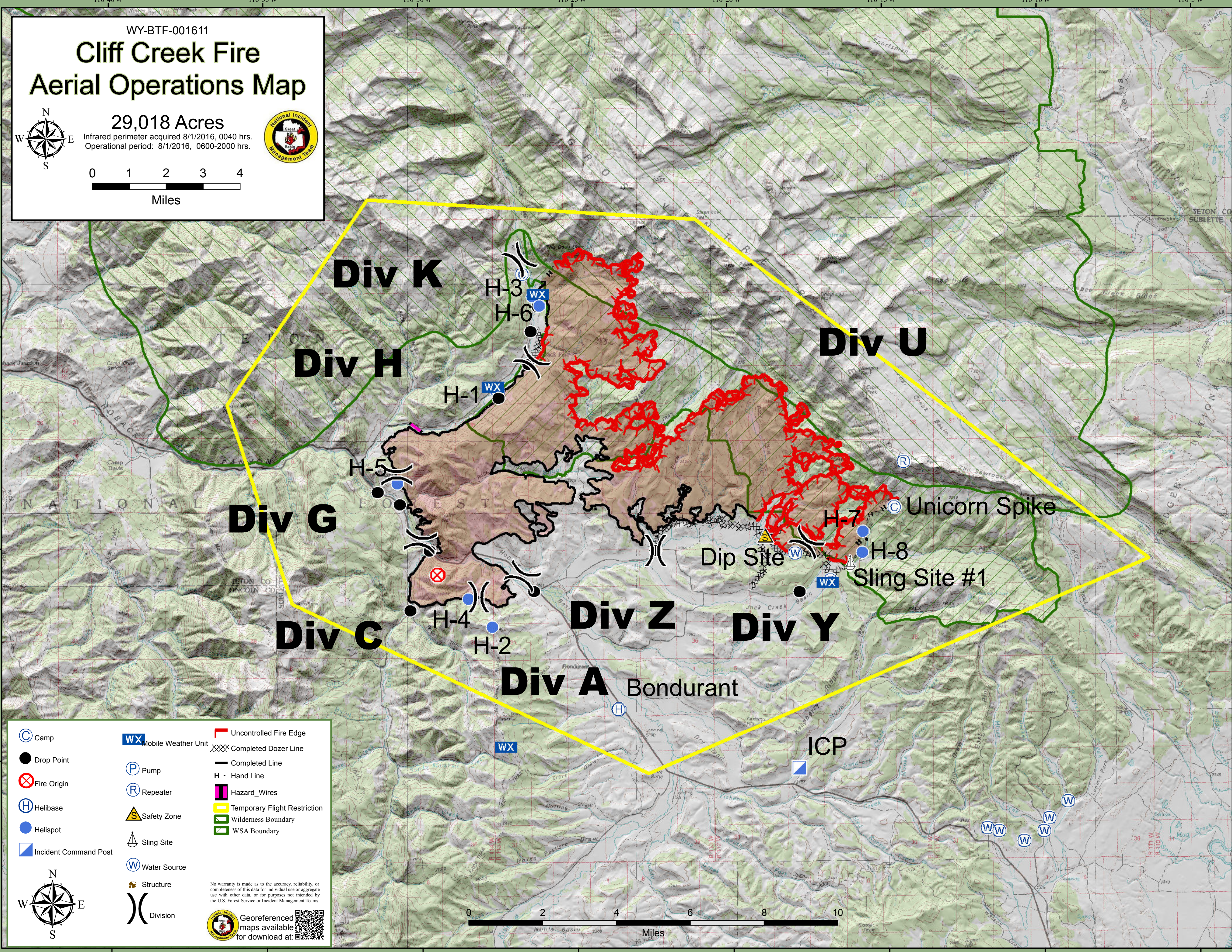
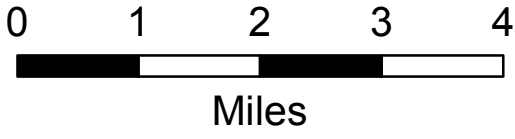
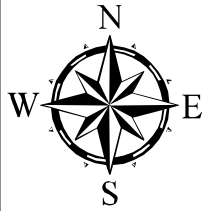


Cliff Creek Fire Aerial Operations Map

WY-BTF-001611

29,018 Acres

Infrared perimeter acquired 8/1/2016, 0040 hrs.
Operational period: 8/1/2016, 0600-2000 hrs.



Camp	Mobile Weather Unit	Uncontrolled Fire Edge
Drop Point	Pump	Completed Dozer Line
Fire Origin	Repeater	Completed Line
Helibase	Safety Zone	Hand Line
Helispot	Sling Site	Hazard_Wires
Incident Command Post	Water Source	Temporary Flight Restriction
Structure	Division	Wilderness Boundary
		WSA Boundary

No warranty is made as to the accuracy, reliability, or completeness of this data for individual use or aggregate use with other data, or for purposes not intended by the U.S. Forest Service or Incident Management Teams.

Georeferenced maps available at:

