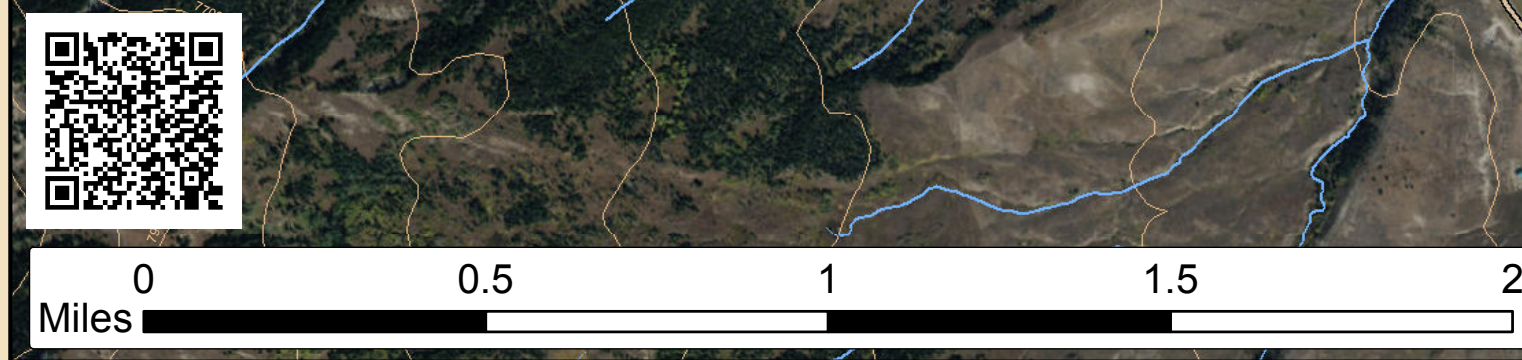
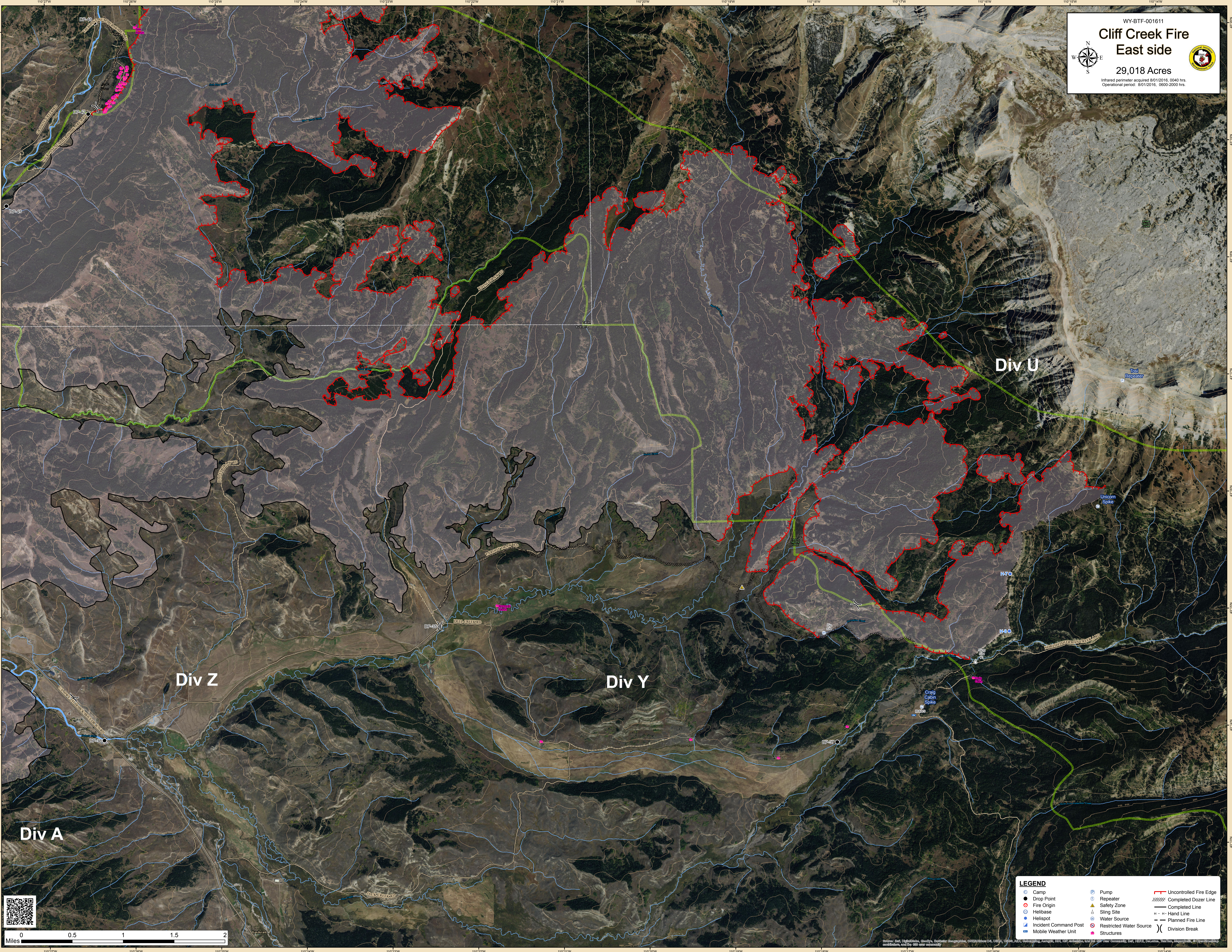


WY-BTF-001611  
**Cliff Creek Fire**  
**East side**  
 29,018 Acres  
 Infrared perimeter acquired 8/01/2016, 0040 hrs.  
 Operational period: 8/01/2016, 0600-2000 hrs.

**LEGEND**

Camp	Pump	Uncontrolled Fire Edge
Drop Point	Repeater	Completed Dozer Line
Fire Origin	Safety Zone	Completed Line
Helibase	Sling Site	Hand Line
Helispot	Water Source	Planned Fire Line
Incident Command Post	Restricted Water Source	Division Break
Mobile Weather Unit	Structures	



110°27'W 110°26'W 110°25'W 110°24'W 110°23'W 110°22'W 110°21'W 110°20'W 110°19'W 110°18'W 110°17'W 110°16'W 110°15'W 110°14'W

45°15'N 45°14'N 45°13'N 45°12'N 45°11'N 45°10'N 45°9'N 45°8'N 45°7'N 45°6'N 45°5'N 45°4'N 45°3'N 45°2'N 45°1'N