
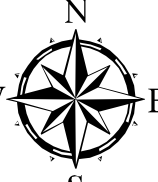
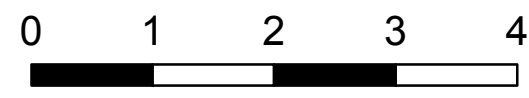
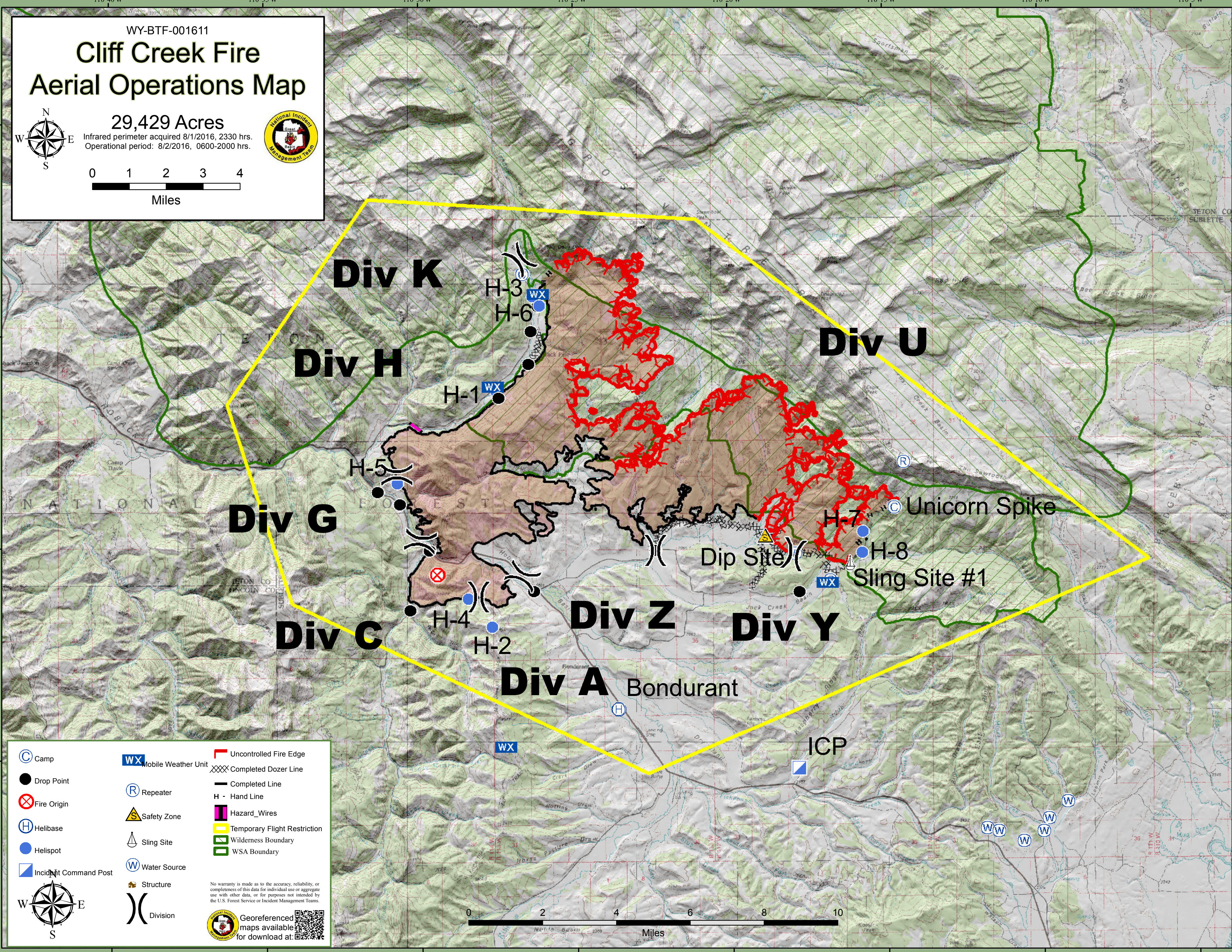



WY-BTF-001611


Cliff Creek Fire Aerial Operations Map

29,429 Acres
Infrared perimeter acquired 8/1/2016, 2330 hrs.
Operational period: 8/2/2016, 0600-2000 hrs.

Camp	Mobile Weather Unit	Uncontrolled Fire Edge
Drop Point	Repeater	Completed Dozer Line
Fire Origin	Safety Zone	Completed Line
Helibase	Sling Site	Hand Line
Helispot	Water Source	Hazard_Wires
Incident Command Post	Structure	Temporary Flight Restriction
	Division	Wilderness Boundary
		WSA Boundary

No warranty is made as to the accuracy, reliability, or completeness of this data for individual use or aggregate use with other data, or for purposes not intended by the U.S. Forest Service or Incident Management Teams.

 Georeferenced maps available for download at: 