

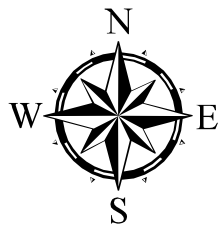
110°33'W 110°32'W 110°31'W 110°30'W 110°29'W 110°28'W 110°27'W 110°26'W 110°25'W 110°24'W

WY-BTF-001611

# Cliff Creek Fire Divs A, C, G, H, K

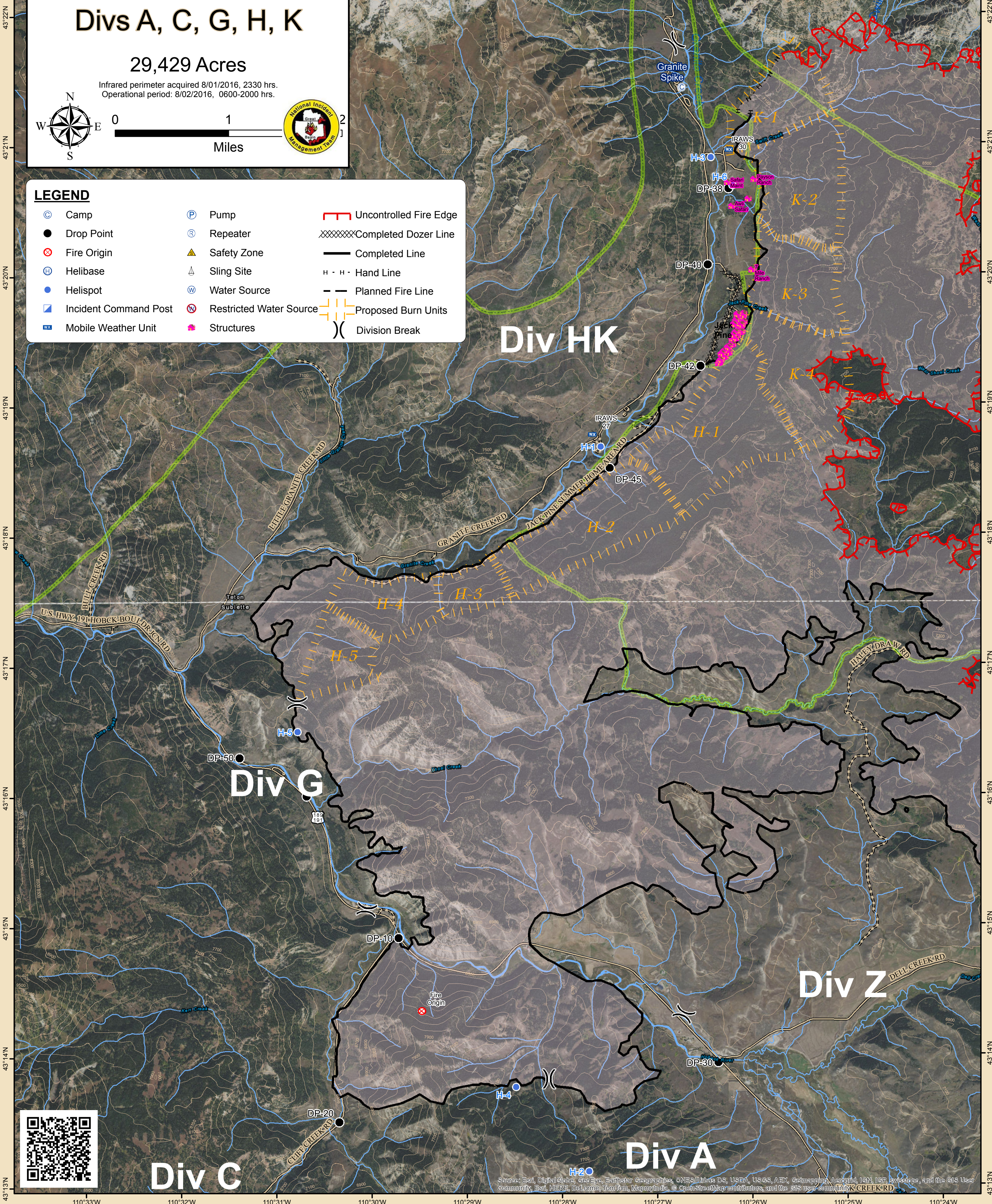
## 29,429 Acres

Infrared perimeter acquired 8/01/2016, 2330 hrs.  
Operational period: 8/02/2016, 0600-2000 hrs.



### LEGEND

- |                       |                         |                        |
|-----------------------|-------------------------|------------------------|
| Camp                  | Pump                    | Uncontrolled Fire Edge |
| Drop Point            | Repeater                | Completed Dozer Line   |
| Fire Origin           | Safety Zone             | Completed Line         |
| Helibase              | Sling Site              | Hand Line              |
| Helispot              | Water Source            | Planned Fire Line      |
| Incident Command Post | Restricted Water Source | Proposed Burn Units    |
| Mobile Weather Unit   | Structures              | Division Break         |



# Div HK

# Div G

# Div Z

# Div C

# Div A



Source: Esri, DigitalGlobe, GeoEye, Earthstar Geographics, CNES/Airbus DS, USDA, USGS, AeroX, Geomatics, AeroGRID, IGN, IGP, Swisstopo, and the GIS User Community. Esri, HERE, DeLorme, TomTom, MapmyIndia, © OpenStreetMap contributors, and the GIS user community. CLIFF CREEK RD

43°22'N  
43°21'N  
43°20'N  
43°19'N  
43°18'N  
43°17'N  
43°16'N  
43°15'N  
43°14'N  
43°13'N

43°22'N  
43°21'N  
43°20'N  
43°19'N  
43°18'N  
43°17'N  
43°16'N  
43°15'N  
43°14'N  
43°13'N

110°33'W 110°32'W 110°31'W 110°30'W 110°29'W 110°28'W 110°27'W 110°26'W 110°25'W 110°24'W